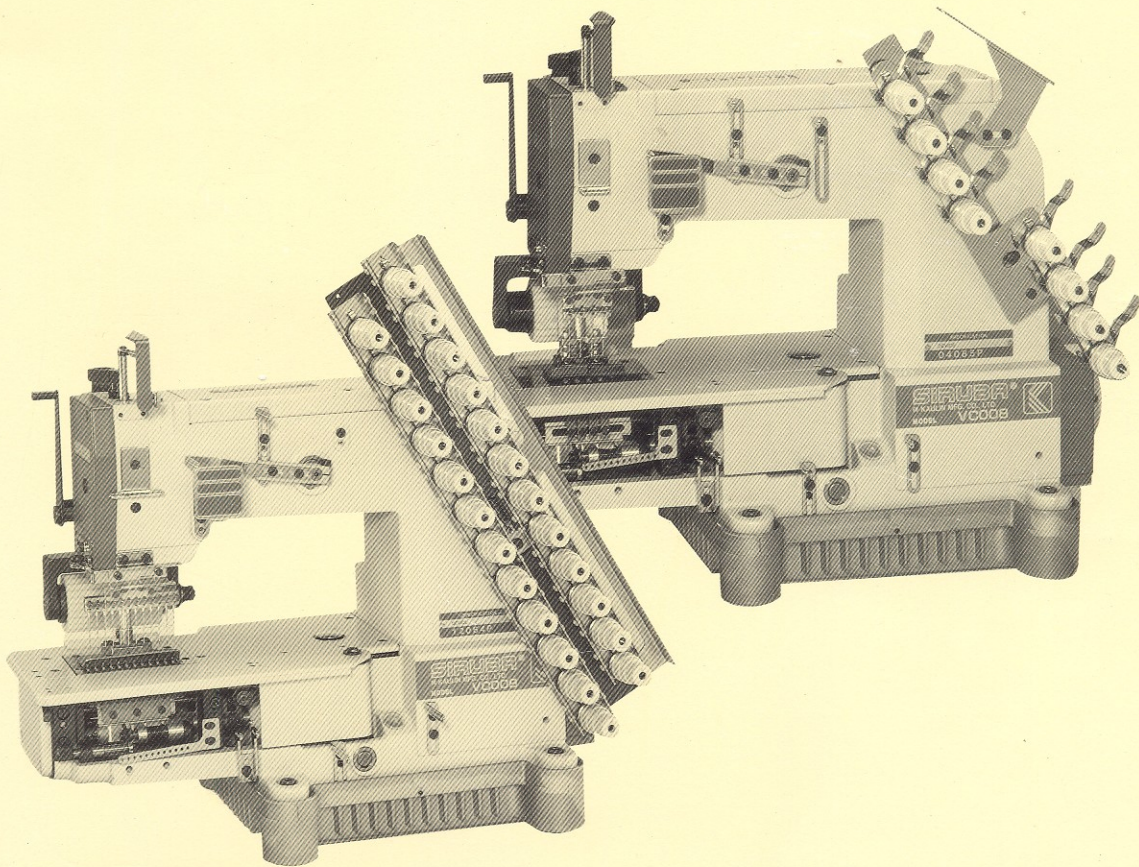


# SIRUBA<sup>®</sup>

# VC008

## SALES GUIDE

### CYLINDER BED MULTI-NEEDLE DOUBLE CHAINSTITCH MACHINE



*c/ catraca.*



KAULIN MFG. CO., LTD.

DESIGN ORIGINAL

## DESCRIPTION OF MACHINE MODELS AND SUBCLASSES

1. How to recognize subclasses	1
2. General specifications	2
3. Spare parts number classification	2
4. How to make conversion	3

## SPARE PART CONVERSION CHART 5

## FEATURES OF MACHINES

VC008-02064P/VMR	6
VC008-04xxxP	8
VC008-04xxxP/VCE/RL	9
VC008-04xxxP/VWL/FH	10
VC008-0448-245P/VSF/FH	11
VC008-06xxxP/VPL/LSA	12
VC008-12xxxP	13
VC008-12xxxP/VPQ	14
VC008-12xxxP/VPT	15

## DIAGRAMS OF ATTACHMENTS/DEVICES

VAD	17
VCE	18
VCL (=P)	19
VMR	22
VPL	27
VPQ	28
VPT	29
VSF	30
VWL	31
FH	34
LSA	35

## DIAGRAMS OF TABLE TOP CUT-OUT 36

# DESCRIPTION OF MACHINE MODELS AND SUBCLASSES

## 1. How to recognize subclasses

V C 0 0 8 - 0 4 6 4 - 2 5 4 P / V W L

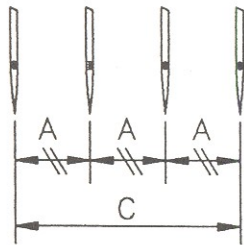
①                      ②                      ③                      ④                      ⑤

① High speed semi-cylinder-bed multi-needle double chainstitch machine

② Number of needles  
04 : 4 needles  
12 : 12 needles

③ Situation I:  
Distance between every two needles (equal distance). Refer to Fig.1

Fig.1

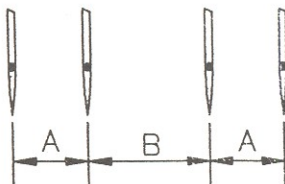


Subclass No.	Total Distance (C)
064	3/4" (19MM)
085	1" (25.4MM)
095	1-1/8" (28.6MM)
106	1-1/4" (31.8MM)
127	1-1/2" (38.1MM)

Situation II:

Distance between every two needles (Various distances). Refer to Fig.2

Fig.2



Subclass	Distance between needles		
	A	B	A *
xx48-191	3/16" (4.8MM)	3/4" (19MM)	3/16" (4.8MM)
xx48-222	3/16" (4.8MM)	7/8" (22.2MM)	3/16" (4.8MM)
xx48-254	3/16" (4.8MM)	1" (25.4MM)	3/16" (4.8MM)
xx64-191	1/4" (6.4MM)	3/4" (19MM)	1/4" (6.4MM)
xx64-127	1/4" (6.4MM)	1/2" (12.7MM)	1/4" (6.4MM)
xx64-254	1/4" (6.4MM)	1" (25.4MM)	1/4" (6.4MM)

④ Rear Puller : "P" means that the machine is with a rear puller. When the rear puller is not equipped with, omit "P". Besides, "P" is equivalent to "VCL" and all mean rear puller.

⑤ Devices

P(VCL): Rear pulling device.

VMR: Ruffling device.

VWL: Front elastic feeding device.

VPL: Tape feeding holder.

VPQ: Elastic shirring stitch device.

VCE: Seamless elastic waist band guiding & attaching device.

VAD: Pneumatic presser foot lifting device.

VSF: Shirt front sewing device.

VPT: Pin-tucking device.

FH: Below-table tape holder.

RL: Tubular goods extending device.

LSA: Tape holder, especially for VPL device.

## 2. General specifications

- (1) Sewing type : Multi-needle double chainstitch sewing.
- (2) Number of needles : 2 - 12 needles.
- (3) Number of threads : 4 - 24 threads.
- (4) Type of needle : ORGAN UO113 #11-#18 / SCHMETZ UY113GS #70-#160
- (5) Distance between needles : Refer to page 1.
- (6) Needle bar stroke : 31mm or 34mm.
- (7) Range from min. to max. of sewing stitches : 6-24 stitches/inch
- (8) Maximum speed : 4500 S.P.M.
- (9) Type of oiling & lubricating : Automatic oiling & lubricating.
- (10) Suggested lubricating oil : AGIP #32, MOBIL #10 or ESSO #32
- (11) Suggested motor : 1/2HP clutch motor.

## 3. Spare parts number classification

① Needle

E 9 XXXX      EX: E9002  
----            --

② Feed Dog

D 9 XXXX      EX: D9002  
----            --

③ Presser Foot

P 9 XXXX      EX: P9002  
----            --

④ Needle Holder

M 9 XXX        EX: M9002  
----            --

⑤ Retainer Holder

R 9 XXXX      EX: R9002  
----            --

⑥ Looper Holder

L 9 XXXX      EX: L9002  
----            --

⑦ Looper : V E 5 1

⑧ V A XX - V Z XX Parts group

VA : Machine Bed Frame and Cover.  
VB : Machine Bed Cover.  
VC : Feeding Mechanism.  
VD : Crank Shaft Mechanism.  
VE : Lower Looper & Retainer Holder Mechanism.  
VF : Needle Bar Mechanism.  
VJ : Presser Foot Mechanism.  
VK : Threading Mechanism.  
VL : Filtering & Lubricating Mechanism.  
VN : Head Supporter.  
VY : Accessories.  
VZ : Thread Stand.

- \* Parts No. ended with "-E" : Parts including screw.
- \* Parts No. ended with "-C" : Group parts.
- \* Parts No. ended with "-A" : Component parts.
- \* Parts No. of attachments : (Attachment model) xx. Ex: VWL01
- \* Parts No. ended with "P" : Parts of machines with needles more than 6.

4. How to make conversion

① Machines with needles below 4 --

Models & subclasses can be converted to any others by changing gauge set.

EX: VC008-04085P      -->      VC008-0448-191

Needle Holder	:	M9004	-->	M9004A
Needle Plate	:	E9004		E9004A
Main Feed Dog	:	D9004		D9004A
Presser Foot	:	P9004		P9004A
Retainer Holder	:	R9004		R9004A
Looper Holder	:	L9004		L9004A

② Machines with needles more than 6 --

Models & subclasses can be converted to any others by changing gauge set.

EX: VC008-12048      -->      VC008-12064

Needle Holder	:	M9012	-->	M9112
Needle Plate	:	E9012		E9112
Main Feed Dog	:	D9012		D9112
Presser Foot	:	P9012		P9112
Retainer Holder	:	R9012		R9112
Looper Holder	:	L9012		L9112

- ③ Machines with needles below 4 and machines with needles more than 6 are interchangeable --

Models & subclasses can be converted to any others by changing gauge set and thread stand.

- Remark: 1. Loopers (VE51), Needles, and Retainers (VE30) have to be ordered when fewer needles model is converted to more needles models.  
2. Parts No. ended with "P" have to be converted.  
Ex. VK01 --> VK01P or VK01P --> VK01  
3. VK series (1) has to be changed to VK series (2).

EX: VC008-04085P            -->            VC008-12064P

Needle Holder	:	M9004	-->	M9112
Needle Plate	:	E9004		E9112
Main Feed Dog	:	D9004		D9112
Presser Foot	:	P9004		P9112
Retainer Holder:		R9004		R9112
Looper Holder	:	L9004		L9112
		VA19		VA19P
		VA06		VA06P
		VB06		VB06P
		VE32		VE32P
		VF19		VF19P
		VF18		VF18P
		VJ01-3		VJ01-3P
		VK series(1)		VK series (2)

Additional loopers (VE51), needles, retainers (VE30) have to be ordered.

- ④ Machines with more needles can be converted to machines with fewer needles --  
Remove unnecessary needles according to the desired distance between needles needed.

\*\* Remarks :

Above mentioned machines can be converted to any others only when their needle bar strokes are the same.

## SPARE PARTS CONVERSION CHART

MODEL NO.	SUB-CLASS	DISTANCE BETWEEN NEEDLES	NEEDLE HOLDER	NEEDLE PLATE	FEED DOG	PRESSER FOOT	RETAINER HOLDER	LOOPER HOLDER	NEEDLE BAR STROKE	NEEDLE U0113
VC008-02 /VMR	064	1/4"	M9002	E9002	D9002	P9002	R9002	L9002	31 mm	#75 - #100
VC008-04	064	3/4"	M9004	E9004	D9004	P9004	R9004	L9004	34 mm	"
	085	1"	M9104	E9104	D9104	P9104	R9104	L9104		"
	095	1-1/8"	M9204	E9204	D9204	P9204	R9204	L9204		"
	106	1-1/4"	M9304	E9304	D9304	P9304	R9304	L9304		"
	127	1-1/2"	M9404	E9404	D9404	P9404	R9404	L9404		"
VC008-04/ VCE/RL/VAD	064	3/4"	M9404	E9404	D9004	P9004	R9004	L9004	34 mm	"
	085	1"	M9104	E9104	D9104	P9104	R9104	L9104		"
	095	1-1/8"	M9204	E9204	D9204	P9204	R9204	L9204		"
	106	1-1/4"	M9304	E9304	D9304	P9304	R9304	L9304		"
	127	1-1/2"	M9404	E9404	D9404	P9404	R9404	L9404		"
VC008-04/ VWL/FH	064	3/4"	M9404	E9404	D9004	P9004	R9004	L9004	34 mm	"
	085	1"	M9104	E9104	D9104	P9104	R9104	L9104		"
	095	1-1/8"	M9204	E9204	D9204	P9204	R9204	L9204		"
	106	1-1/4"	M9304	E9304	D9304	P9304	R9304	L9304		"
	127	1-1/2"	M9404	E9404	D9404	P9404	R9404	L9404		"
VC008-0448	191	3/16-3/4-3/16"	M9504A	E9504A	D9404A	P9404A	R9404A	L9404A	34 mm	"
	222	3/16-3/4-3/16"	M9204A	E9204A	D9204A	P9204A	R9204A	L9204A		"
	254	3/16-3/4-3/16"	M9404A	E9404A	D9404A	P9404A	R9404A	L9404A		"
VC008-0448 VSF/FH	254	3/16-3/4-3/16"	M9404A	E9404A	D9404A	P9404A	R9404A	L9404A	34 mm	"
VC008-0448	191	1/4 -3/4-1/4 "	M9304A	E9304A	D9304A	P9304A	R9304A	L9304A	34 mm	"
	127	1/4 -3/4-1/4 "	M9004A	E9004A	D9004A	P9004A	R9004A	L9004A		"
	254	1/4 -3/4-1/4 "	M9104A	E9104A	D9104A	P9104A	R9104A	L9104A		"
VC008-0464 VSF/FH	191	1/4 -3/4-1/4 "	M9304A	E9304A	D9304A	P9304A	R9304A	L9304A	34 mm	"
	254	1/4 -3/4-1/4 "	M9104A	E9104A	D9104A	P9104A	R9104A	L9104A		"
VC008-06 VPL/LSA	048	3/16"	M9012	E9012	D9012	P9012	R9012	L9012	34 mm	"
	064	1/4"	M9112	E9112	D9112	P9112	R9112	L9112		"
VC008-12	048	3/16"	M9012	E9012	D9012	P9012	R9012	L9012	34 mm	"
	064	1/4"	M9112	E9112	D9112	P9112	R9112	L9112		"
VC008-12 /VPQ	048	3/16"	M9012	E9012	D9012	P9212	R9012	L9012	34 mm	"
	064	1/4"	M9112	E9112	D9112	P9312	R9112	L9112		"
VC008-12 /VPT	048	3/16"	M9012	E9012	D9012	P9212	R9012	L9012	34 mm	DV57
	064	1/4"	M9112	E9112	D9112	P9312	R9112	L9112		#90

## FEATURES OF MACHINE

MODEL : VC008-02064P/VMR

NAME : 2-NEEDLE SEMI-CYLINDER-BED DOUBLE CHAINSTITCH RUFFLING MACHINE. EQUIPPED WITH PULLER

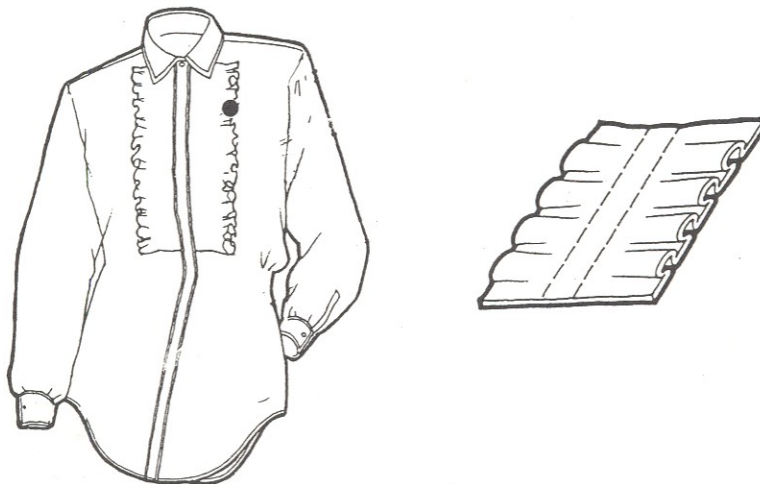
### DESCRIPTION :

Applies to the ruffling sewing on curtains, bed covers, bed sheets, table covers or interior cloth decorations. By using different cams, a good number of beautiful ruffling sewings can be produced.

### REMARKS :

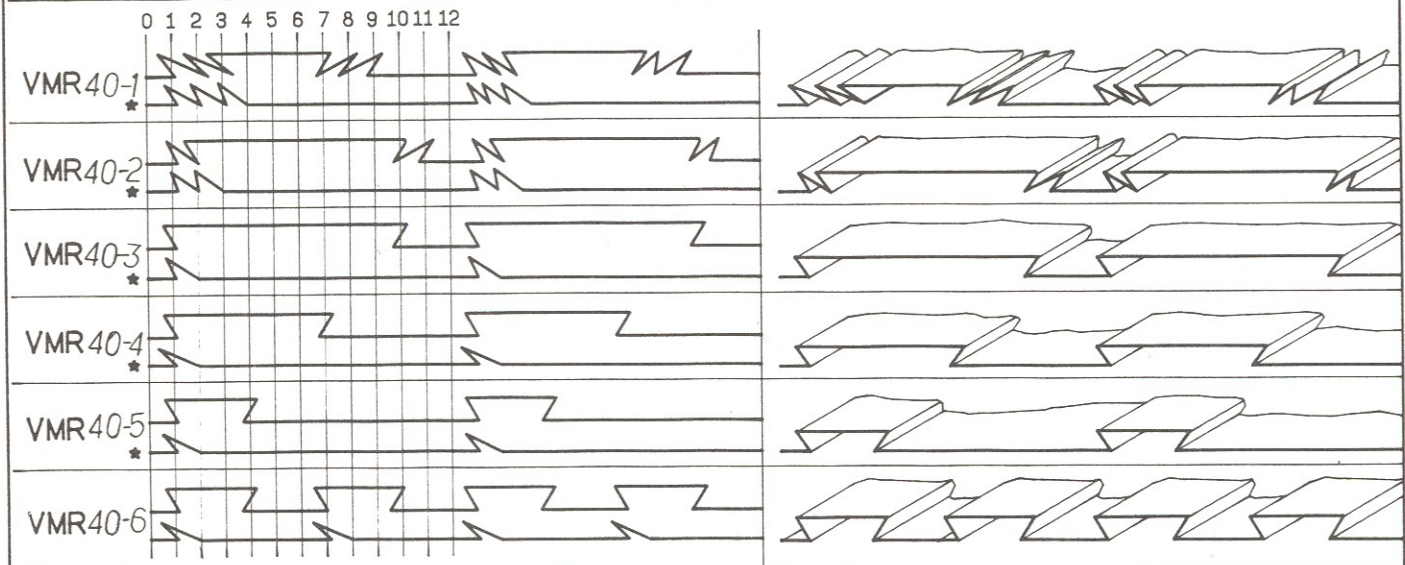
1. Rear puller VCL16/VCL28 are in flat shape.
2. This model is designed for special use, therefore, it can not be converted by changing the gauge set.
3. The maximum interval between each ruffling is about 7-8mm.
4. Six different cams are included in this machine. (VMR40-1,2,3,4,5,6)

### SEWING ILLUSTRATION :



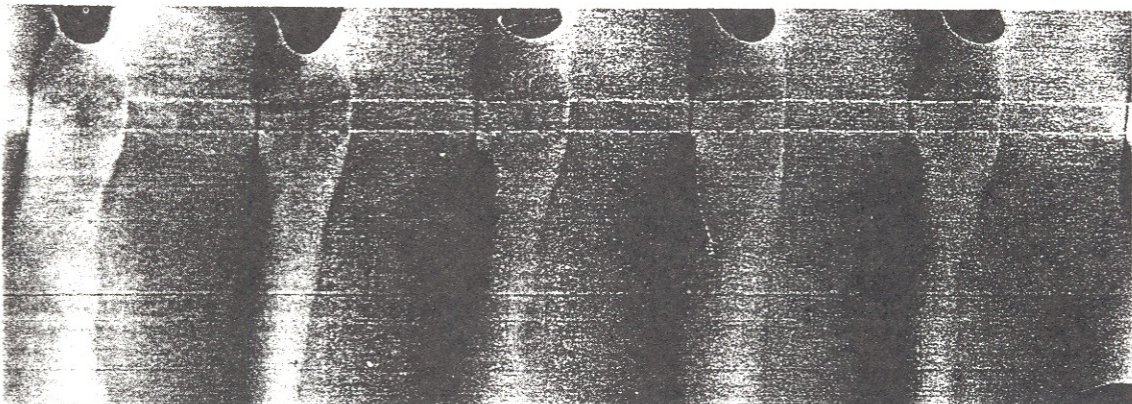


# STANDARD CAMS

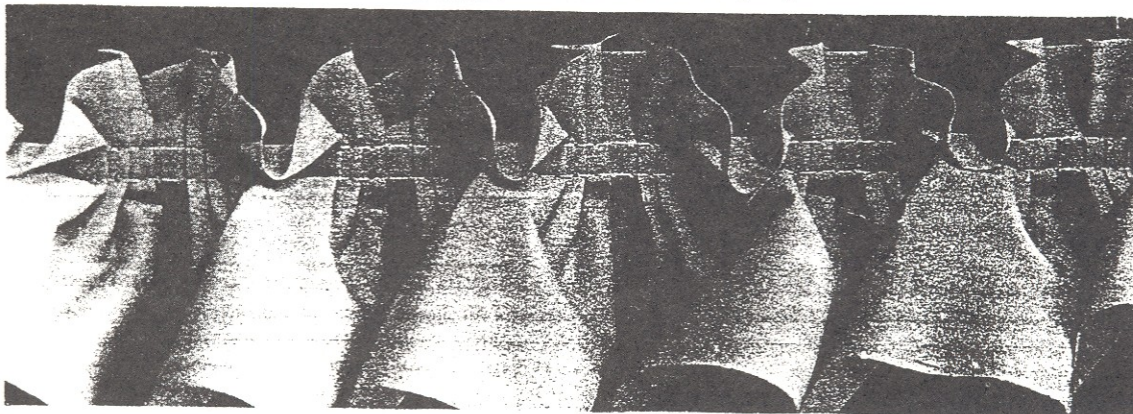


Note: The ruffling of the above cam with a "\*" marking means the ruffling can be done by putting fabric between Lower Ruffling Plate (VMR67) and Holding Plate (VMR12).

## VC008-02064 SEWING SAMPLES



Cam No.VMR40-5



Cam No.VMR40-1

## FEATURES OF MACHINE

MODEL : V C O O 8 - 0 4 XXXP ( XXX=064,085,095,106,107 )

NAME : 4-NEEDLE SEMI-CYLINDER-BED DOUBLE CHAINSTITCH MACHINE

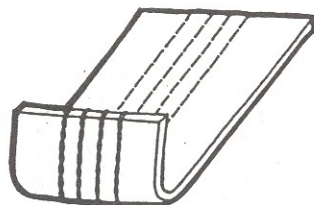
### DESCRIPTION :

1. Automatic oiling and lubricating. Back and forth loopers moving and driving mechanism.
2. Semi cylinder bed enables the tubular goods to be sewn in an efficient way.
3. Push-button type of stitch length regulator speeds up the adjusting procedure.

### REMARKS :

1. This machine is available to be put together with various devices for special sewing purposes.
2. Please refer to the descriptions of other machine models with special devices for knowing about their sewing functions.

### SEWING ILLUSTRATION :



## FEATURES OF MACHINE

MODEL : V C O O 8 - 0 4 XXXP / V C E / R L  
(XXX=064,085,095,106,127)

NAME : 4-NEEDLE SEMI-CYLINDER-BED DOUBLE CHAINSTITCH MACHINE  
--ESPECIALLY FOR SEAMLESS ELASTIC WAIST BAND ATTACHING

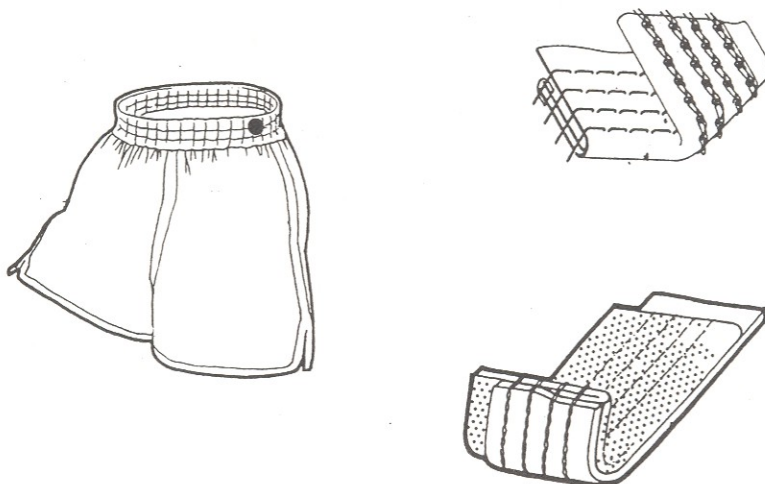
### DESCRIPTION :

1. Automatic oiling and lubricating. Back and forth loopers moving and driving mechanism.
2. Semi cylinder bed enables the tubular goods to be sewn in an efficient way.
3. Push-button type of stitch length regulator speeds up the adjusting procedure.

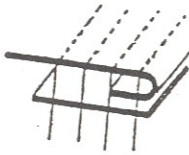
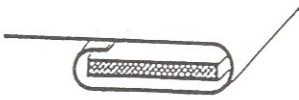

### REMARKS :

1. In addition to the ordinary sewing, the seamless elastic waist band can be attached on to the men's briefs by using VCE and RL devices.
2. With VCE and RL devices, this machine can also sew on the seamless elastic waist band after overlock seaming.
3. VCE and RL need to be used together.
4. When VAD device is used together with the machine, a compressing air supply system is required.
5. This machine is equipped with VCL rear puller for waist band attaching purpose. Rollers VCL108/VCL33 of VCL are in gear shape.

### SEWING ILLUSTRATION :



## FEATURES OF MACHINE

<b>MODEL :</b>	VC008-04XXXP/VWL/FH (XXX=064,085,095,106,127)																								
<b>NAME :</b>	4-NEEDLE SEMI-CYLINDER-BED DOUBLE CHAINSTITCH MACHINE --ESPECIALLY FOR ELASTIC WAIST BAND ATTACHING																								
<b>DESCRIPTION :</b>	<ol style="list-style-type: none"> <li>1. VWL front elastic feeding device is operated by interior mechanism of the machine, and the length of elastic fed by VWL can be easily adjusted.</li> <li>2. Because the machine is equipped with front and rear pullers, the elastic waist on jogging suits, sportswear or slacks can be maintained in the same elasticity for the sewing quality.</li> <li>3. A roll of elastic band is suggested to be placed on FH fixed under table and then fed by VWL.</li> </ol>																								
<b>REMARKS :</b>	<ol style="list-style-type: none"> <li>1. VWL device can be purchased separately and installed by the users.</li> <li>2. VCL08/VCL33 rollers of rear puller are in gear shape.</li> <li>3. There are 2 kinds of folders: B411 (3-fold type) and B413 (2-fold type, adjustable maximum width is 1-1/2"). The machine will be with standard folder B413, if the order is not specified.</li> </ol> <table style="margin-left: 40px; margin-top: 10px; border-collapse: collapse;"> <tr> <td style="padding-right: 20px;">Parts No.</td> <td style="padding-right: 20px;">B411</td> <td style="padding-right: 20px;">B411P</td> <td style="padding-right: 20px;">B411Q</td> <td style="padding-right: 20px;">B411R</td> <td style="padding-right: 20px;">B411S</td> </tr> <tr> <td style="padding-right: 20px;">Width before binding</td> <td style="padding-right: 20px;">33MM</td> <td style="padding-right: 20px;">30MM</td> <td style="padding-right: 20px;">42MM</td> <td style="padding-right: 20px;">25MM</td> <td style="padding-right: 20px;">36MM</td> </tr> <tr> <td style="padding-right: 20px;">Width after binding</td> <td style="padding-right: 20px;">31MM</td> <td style="padding-right: 20px;">28MM</td> <td style="padding-right: 20px;">40MM</td> <td style="padding-right: 20px;">23MM</td> <td style="padding-right: 20px;">34MM</td> </tr> <tr> <td style="padding-right: 20px;">Model VC008-04-</td> <td style="padding-right: 20px;">095</td> <td style="padding-right: 20px;">085</td> <td style="padding-right: 20px;">127</td> <td style="padding-right: 20px;">064</td> <td style="padding-right: 20px;">106</td> </tr> </table> <ol style="list-style-type: none"> <li>4. FH device is required for VWL.</li> </ol>	Parts No.	B411	B411P	B411Q	B411R	B411S	Width before binding	33MM	30MM	42MM	25MM	36MM	Width after binding	31MM	28MM	40MM	23MM	34MM	Model VC008-04-	095	085	127	064	106
Parts No.	B411	B411P	B411Q	B411R	B411S																				
Width before binding	33MM	30MM	42MM	25MM	36MM																				
Width after binding	31MM	28MM	40MM	23MM	34MM																				
Model VC008-04-	095	085	127	064	106																				
<b>SEWING ILLUSTRATION :</b>	<div style="text-align: center; margin-bottom: 20px;"> <p>B413</p>  </div> <div style="text-align: center;"> <p>B411</p>  </div> <div style="margin-top: 20px;">  </div>																								

## FEATURES OF MACHINE

**MODEL :**

VC008 - 0448 - 245P / VSF / FH  
(0464-191, 0464-254)

**NAME :**

4-NEEDLE SEMI-CYLINDER-BED DOUBLE CHAINSTITCH SHIRT  
FRONT SEWING MACHINE

**DESCRIPTION :**

With 4 needles or 2 needles, only one sewing procedure is required for sewing various kinds of shirt fronts. Because a specific folder is used together, a long and continuous sewing can be very smooth and convenient.

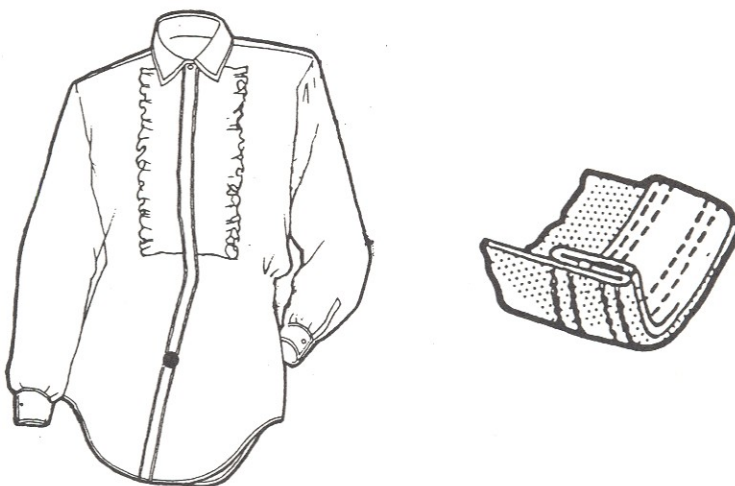
**REMARKS :**

1. Rollers VCL16/VCL28 of rear puller are in flat shape.
2. If the folder is required for the machine, while ordering, folder's number has to be specified.

Folder No.	B529	B529P	B529Q
Before binding	2-3/8"	2-1/2"	2-5/8"
Finished size	1-3/8"	1-1/2"	1-5/8"
Available model	VC008-0464-191	VC008-0448-254	VC008-0464-254

3. The cost of folders required needs to be charged.
4. FH is the device required for VSF.

**SEWING ILLUSTRATION :**



## FEATURES OF MACHINE

**MODEL :** VC008-06XXXP / VPL / LSA (XXX=048,064)

**NAME :** 6-NEEDLE SEMI-CYLINDER-BED DOUBLE CHAINSTITCH MACHINE FOR ORNAMENTAL TAPE ATTACHING

**DESCRIPTION :**

Specially used for attaching ornamental tape to the front, shoulder, and sleeve of sportswear.

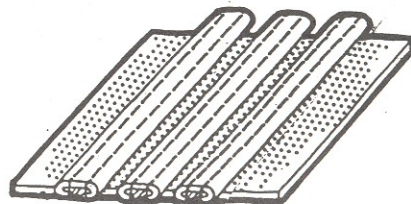
**REMARKS :**

1. Rollers VCL16/VCL28 of rear puller are in flat shape.
2. There are 4 kinds of folders available. (8mm, 9mm, 10mm and 12mm)  
If the folder number is not specified on orders, 12mm sized folder (B417S/417AS) will be attached to VC008-06064 model, and 9mm sized folder (B417Q/417AQ) will be attached to VC008-06048 model.

Folder No.	B417P/417AP	B417Q/417AQ	B417R/417AR	B417S/417AS
Width after binding	8MM	9MM	10MM	12MM
Available model	VC008-06048	VC008-06048	VC008-06064	VC008-06064

3. The tapes whose widths are in multiple of 3/16" or 1/4" can all be used for this machine.

**SEWING ILLUSTRATION :**



## FEATURES OF MACHINE

MODEL : V C 0 0 8 - 1 2 XXXP (XXX=048,064)

NAME : 12-NEEDLE SEMI-CYLINDER-BED DOUBLE CHAINSTITCH MACHINE

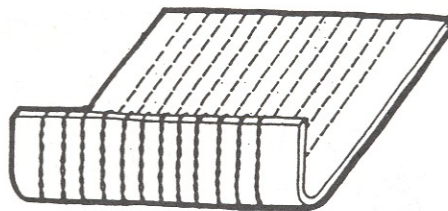
### DESCRIPTION :

1. Back and forth loopers driving mechanism. Automatic oiling and lubricating system.
2. The semi-cylinder-bed design enables the effective sewing on tubular goods.
3. Push-button type stitch length regulator speeds up the adjusting efficiency.

### REMARKS :

1. This machine can be put together with various devices for special sewing purposes.
2. Please refer to the description of other machine models with special devices for knowing about the sewing functions.

### SEWING ILLUSTRATION :



## FEATURES OF MACHINE

MODEL : VC008-12XXP / VPQ (XXX=048,064)

NAME : 12-NEEDLE SEMI-CYLINDER-BED DOUBLE CHAINSTITCH SHIRRING  
MACHINE  
--WITH ELASTIC THREAD SHIRRING SEWING DEVICE

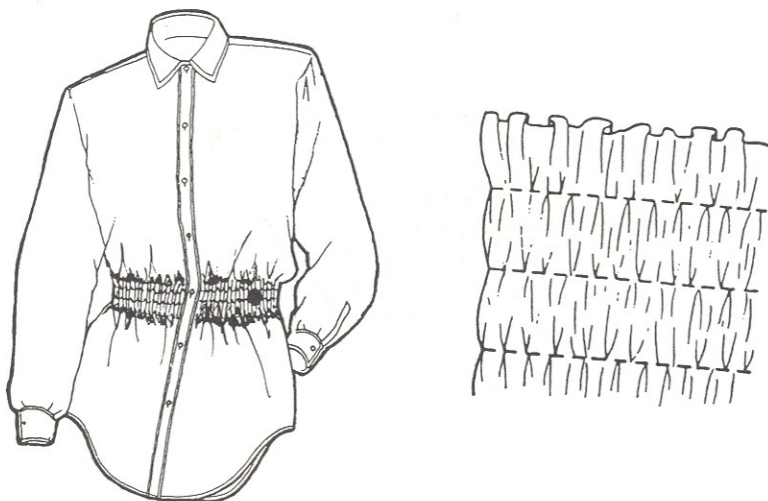
### DESCRIPTION :

Suitable for sewing ornamental shirring with tiny elastic on ladies' blouses, ladies' swimming suits, dresses, pillow covers, and childrens' shirts.

### REMARKS :

1. Rollers VCL16/VCL28 of rear puller are in flat shape.
2. Threads for loopers need to be tiny elastic threads (rubber threads).

### SEWING ILLUSTRATION :





## FEATURES OF MACHINE

MODEL : VC008-12XXXP / VPT

NAME : 12-NEEDLE SEMI-CYLINDER-BED DOUBLE CHAINSTITCH MACHINE WITH PIN-TUCKING ATTACHMENT AND PULLER

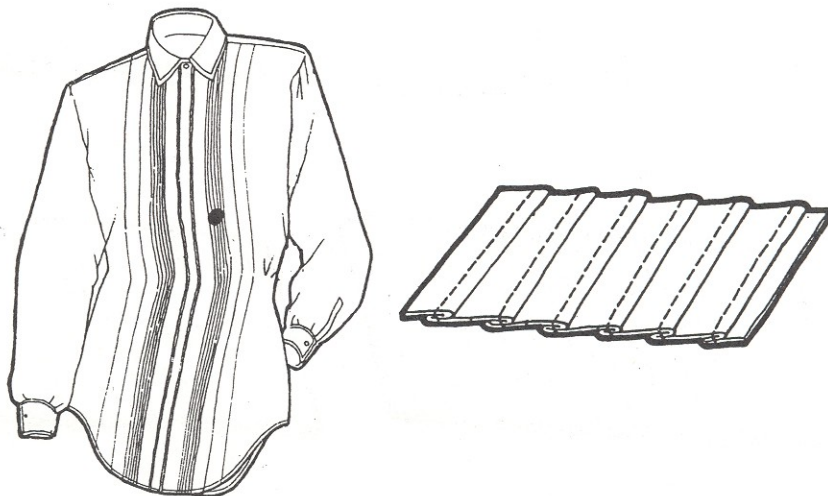
### DESCRIPTION :

Suitable for pin-tucking sewing on men's and ladies' shirts, ladies' dresses, childrens' shirts. No matter for left or right-fold sewing, quality sewing can be assured.

### REMARKS :

1. Rollers VCL16/VCL28 of rear puller are in flat shape.
2. There are 1/4" and 3/16" different sized folders for selection. 3/16" folder is for VC008-12048 model, and 1/4" folder is for VC008-12064 model.
3. If VPT device is ordered separately and installed by the user himself, the fixture for cloth guide VA05/VA01 need to be tapped first for installation.

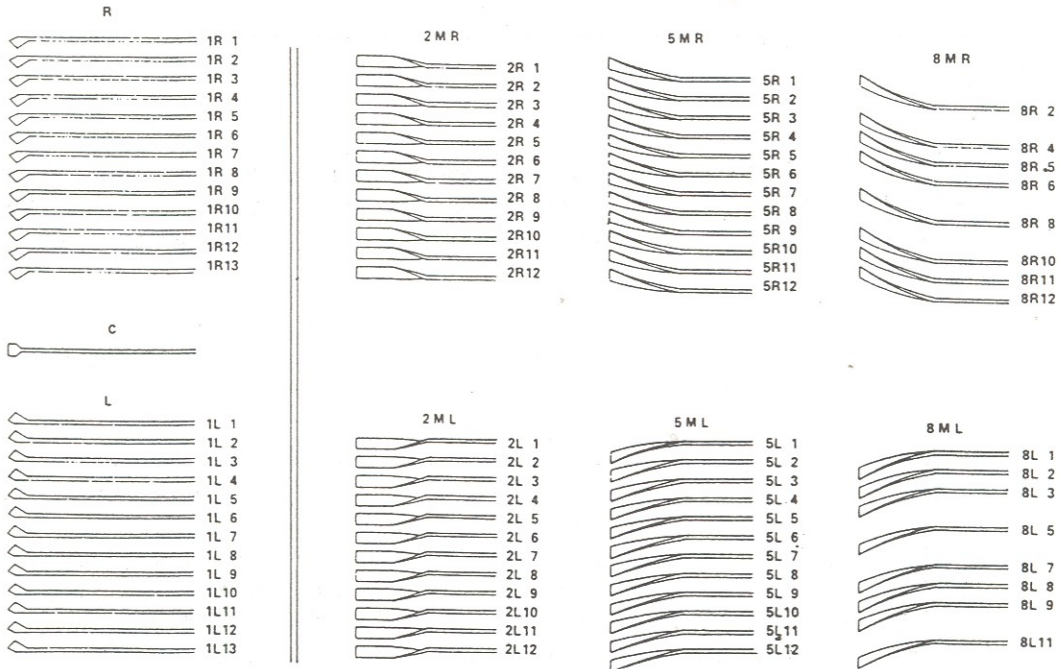
### SEWING ILLUSTRATION :



**Tucking Device:**

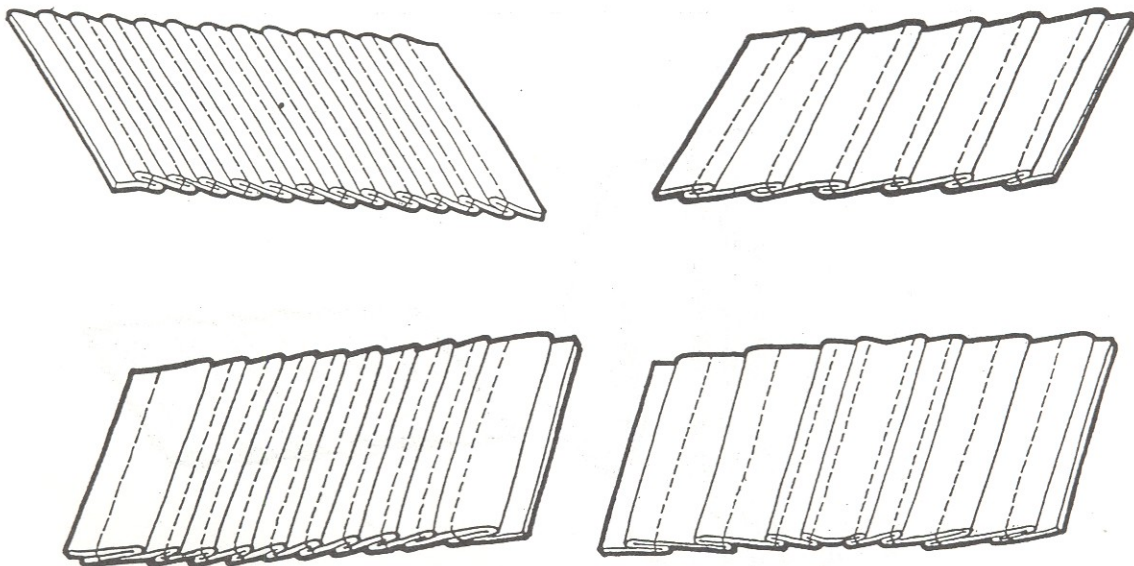
Various kinds of fabric guides can be changeable according to different purposes. Therefore, one machine can fit different purposes of sewing by only changing the fabric guides.

## Standard fabric guides

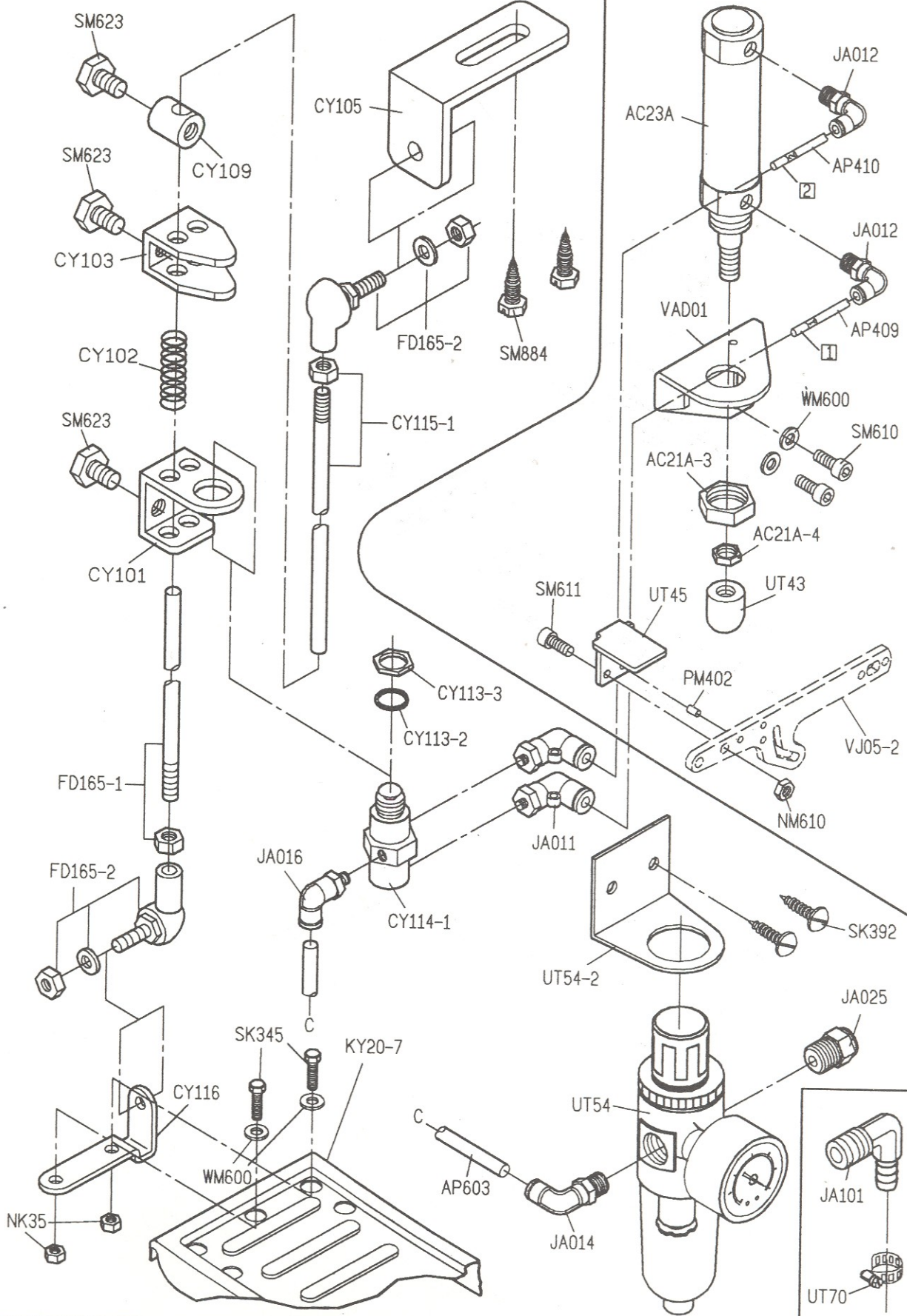


\* Extra guides are provided.

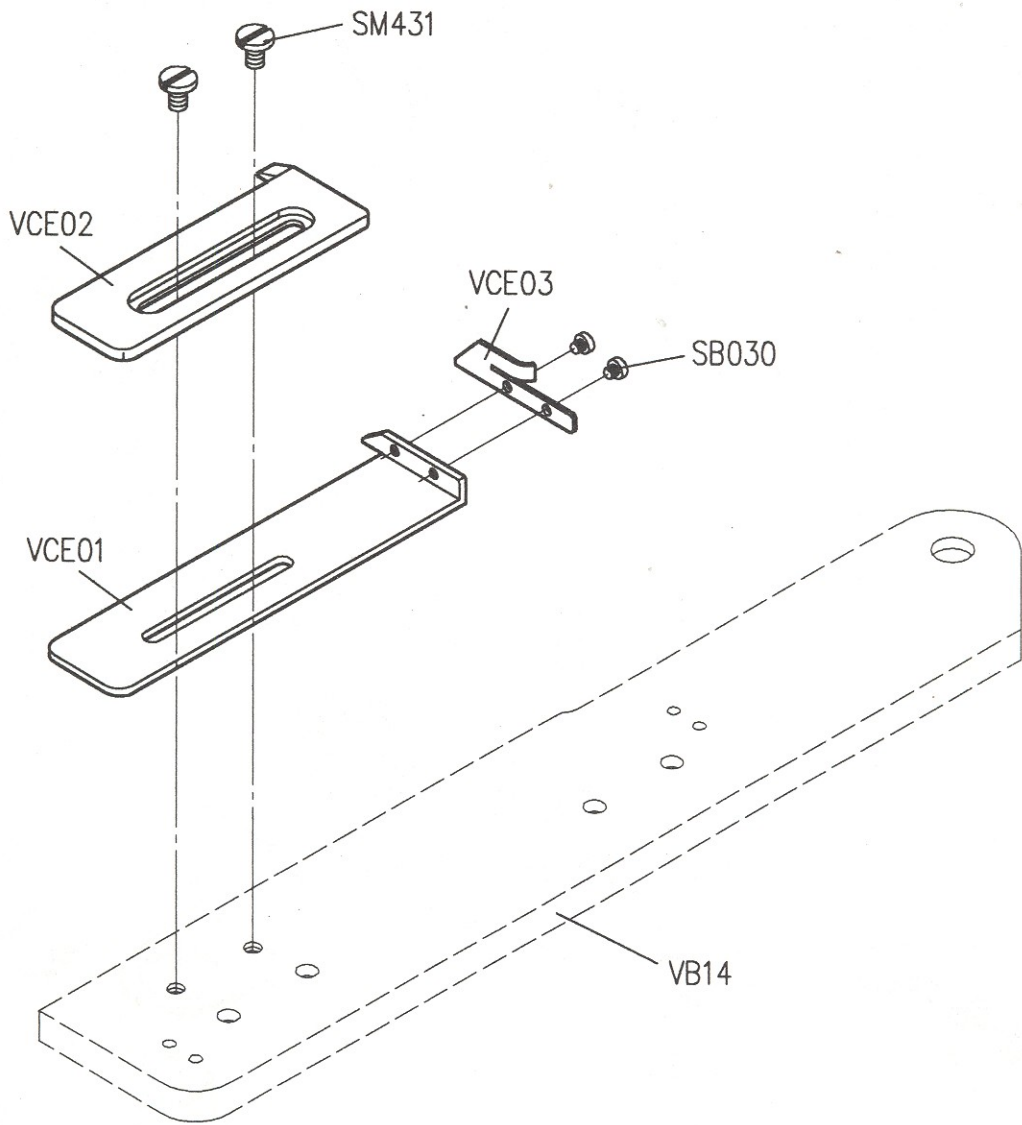
## STANDARD SEWING SAMPLES



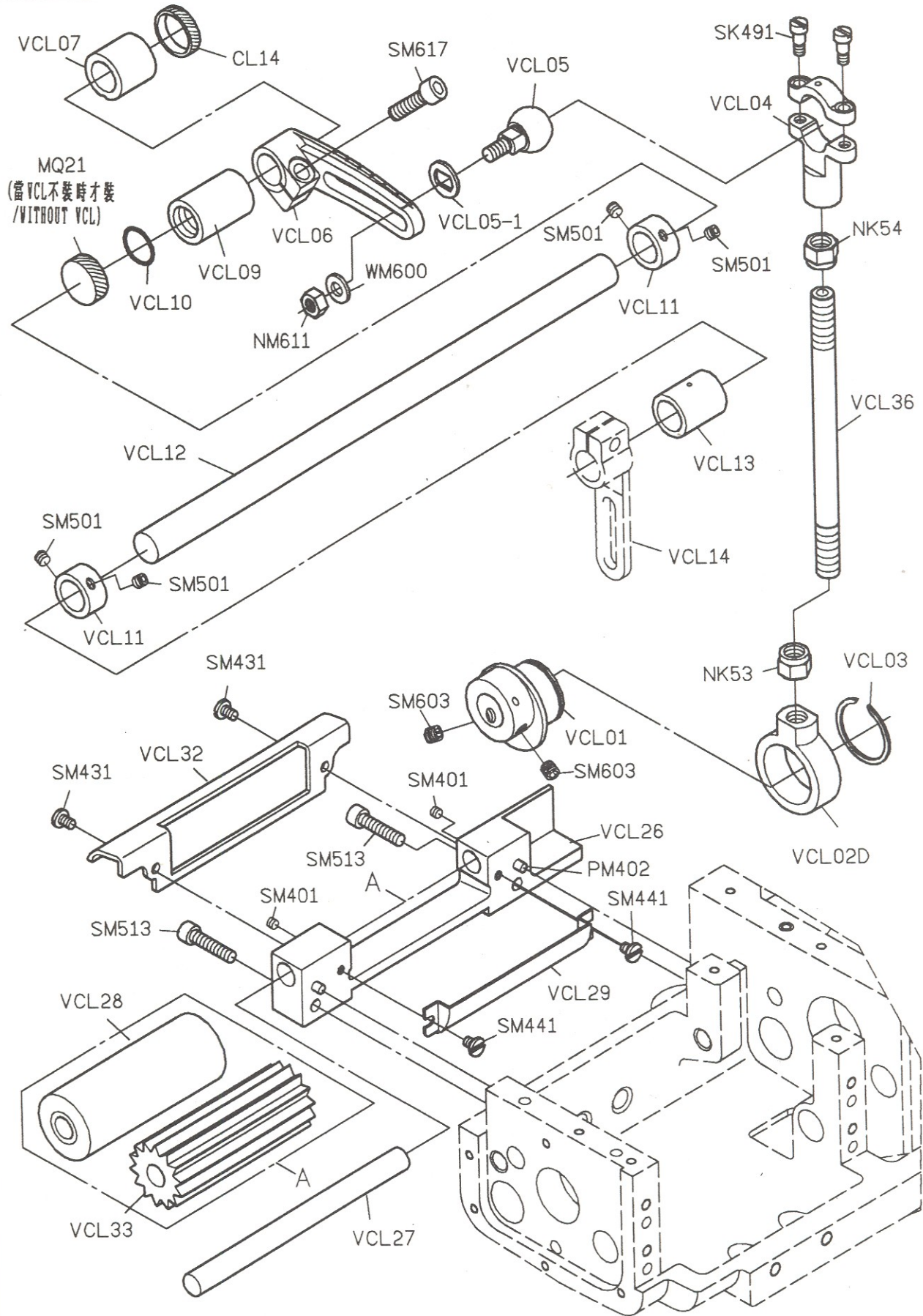
# PARTS LIST FOR VAD GROUP



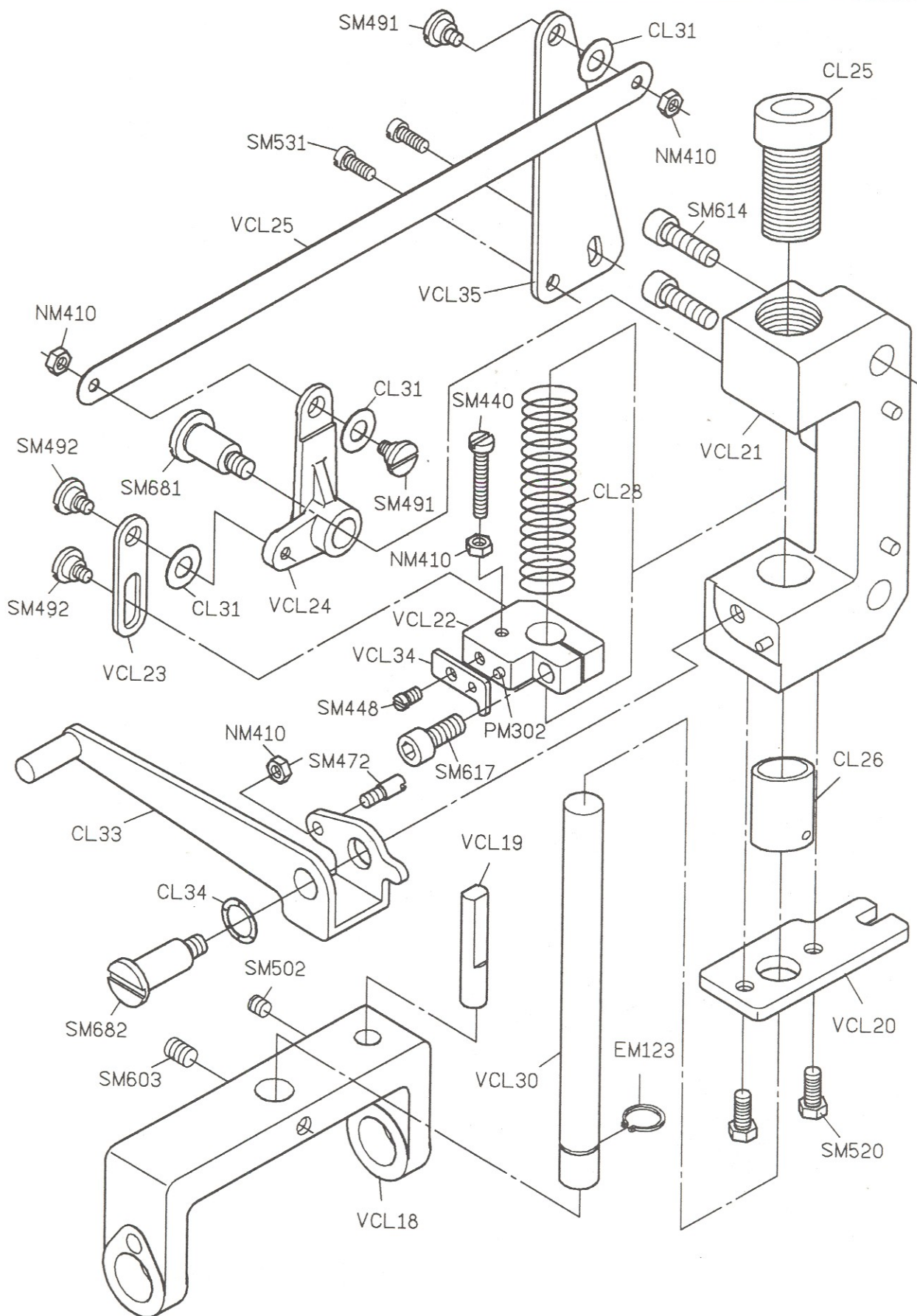
# PARTS LIST FOR VCE GROUP



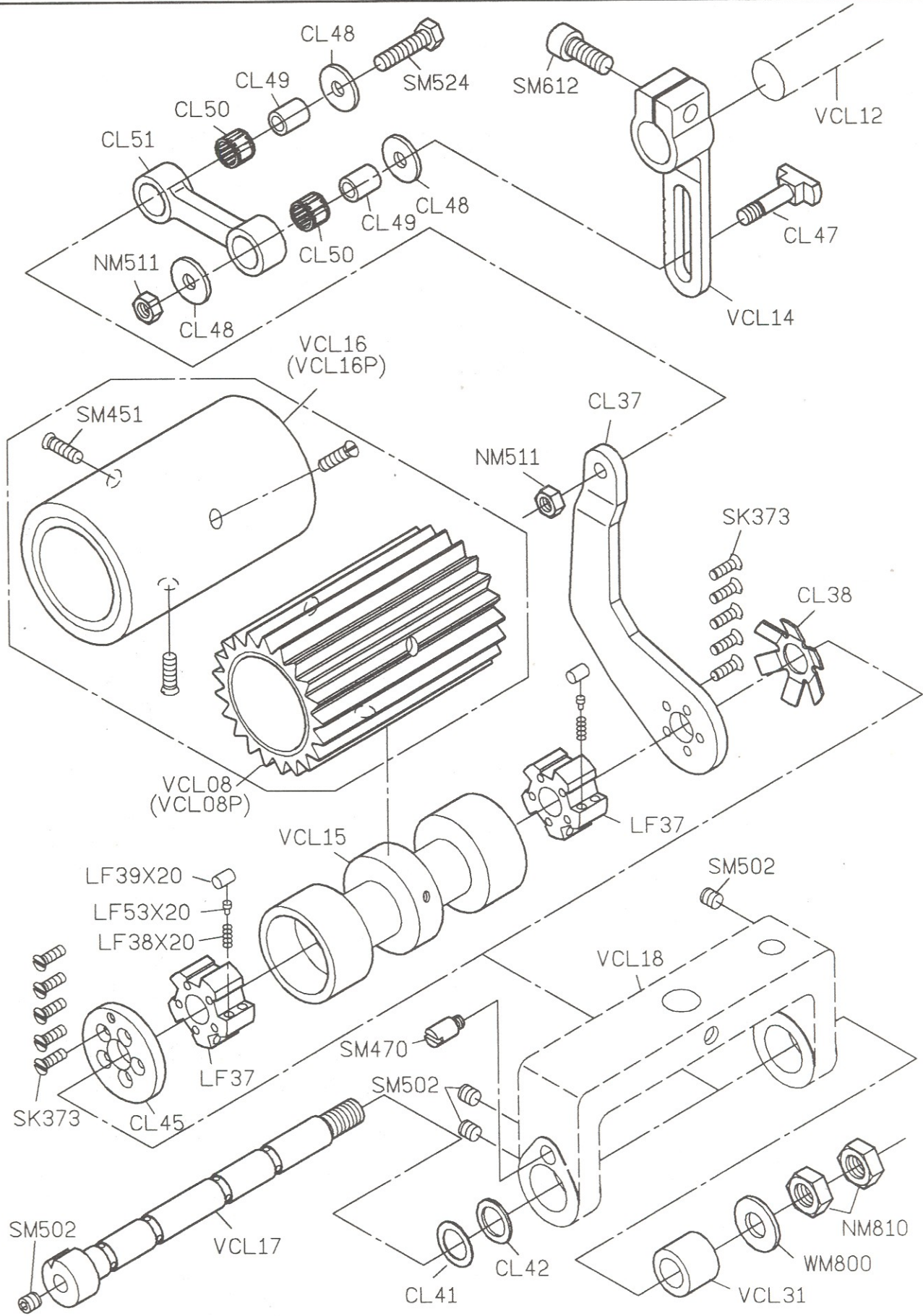
# PARTS LIST FOR VCL GROUP



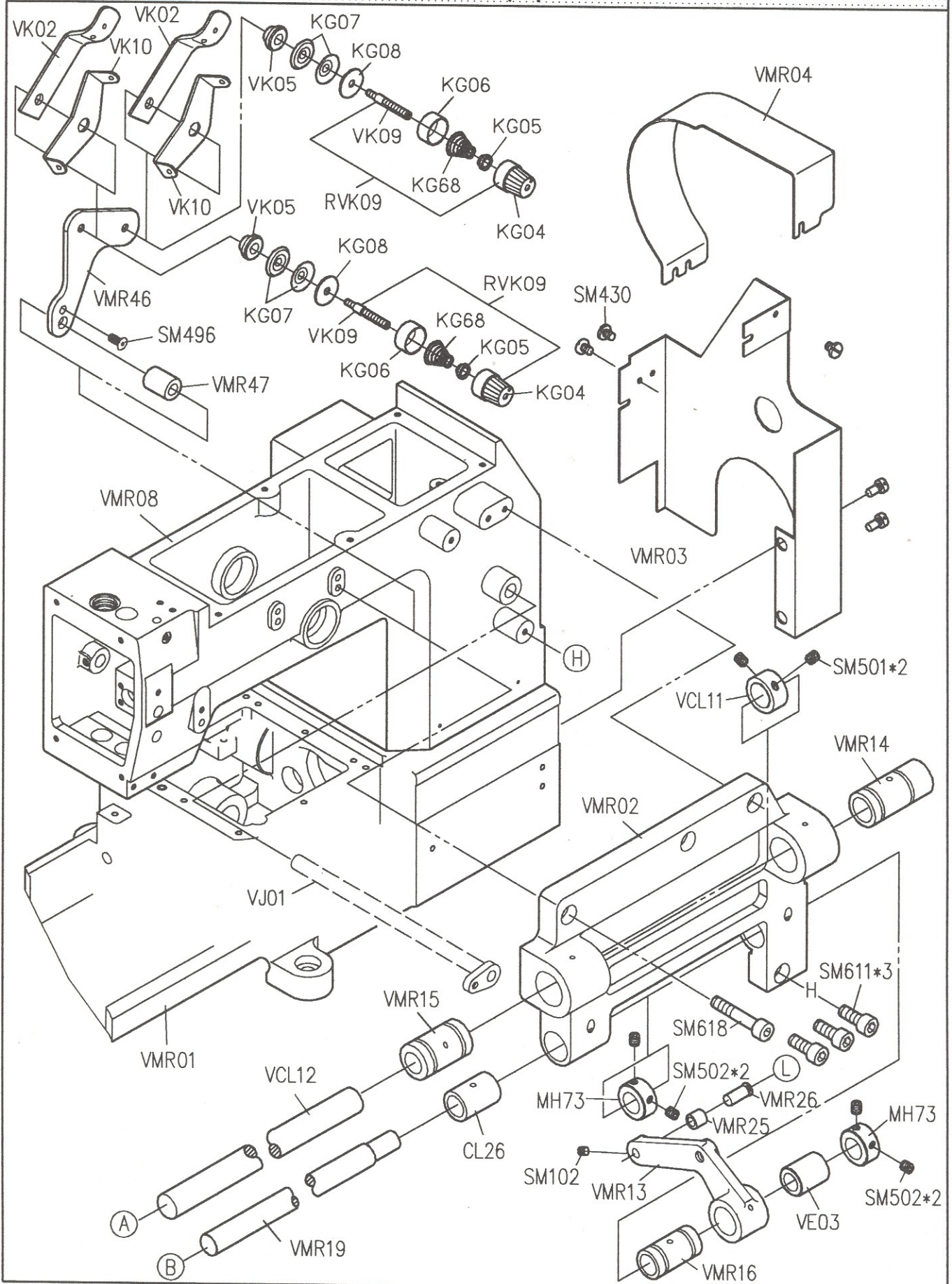
# PARTS LIST FOR VCL(2) GROUP



# PARTS LIST FOR VCL(3) GROUP

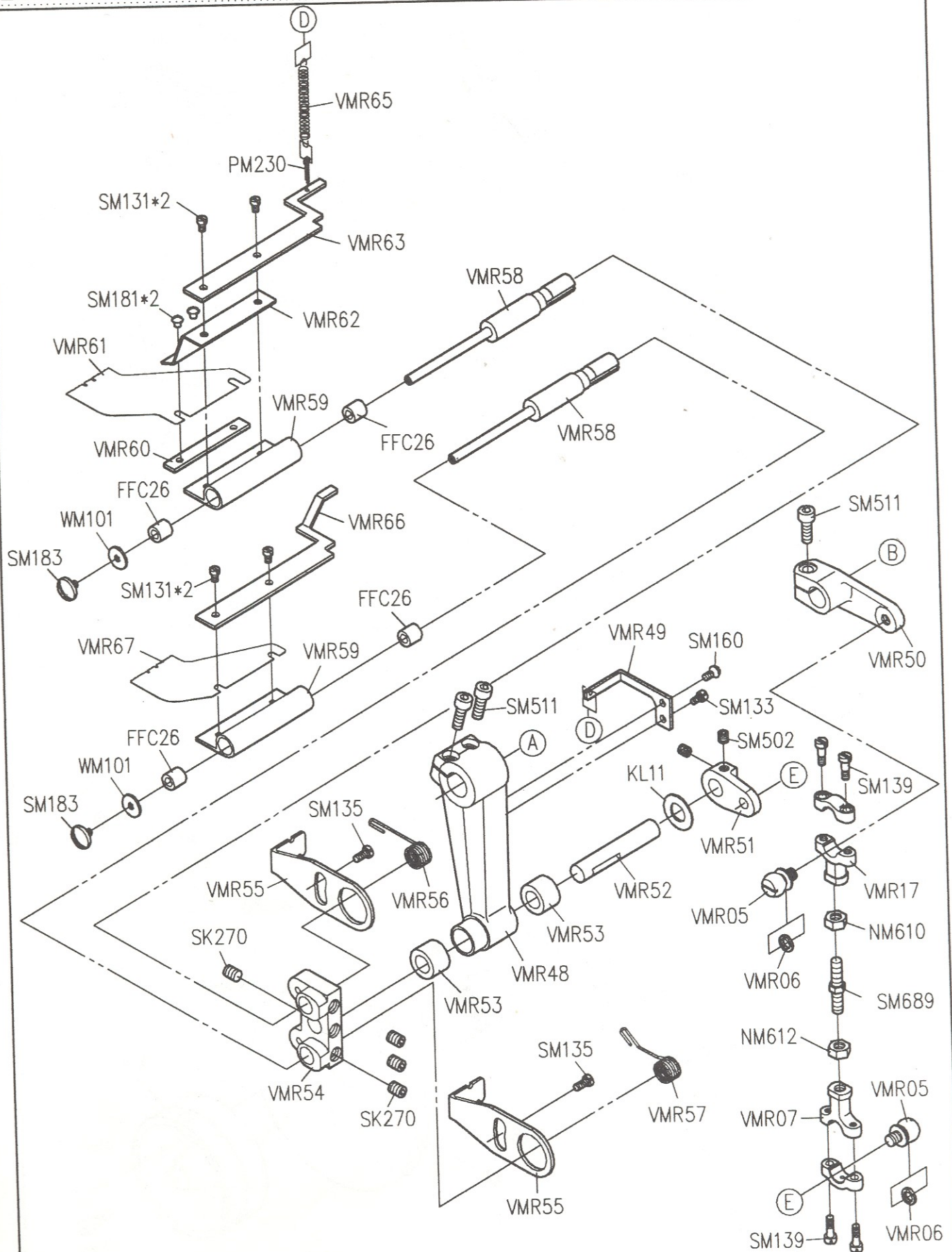


# PARTS LIST FOR VMR(1) GROUP

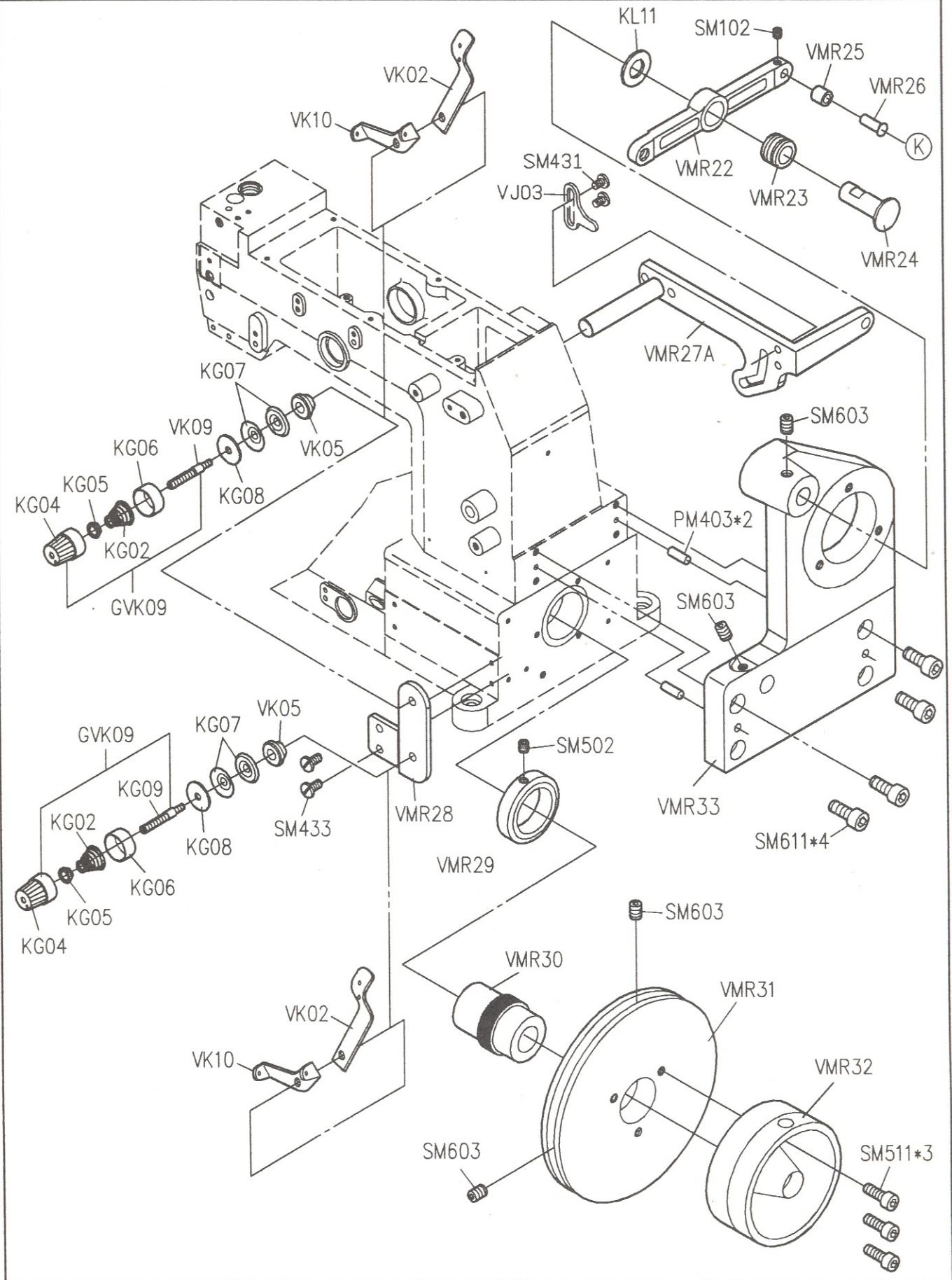




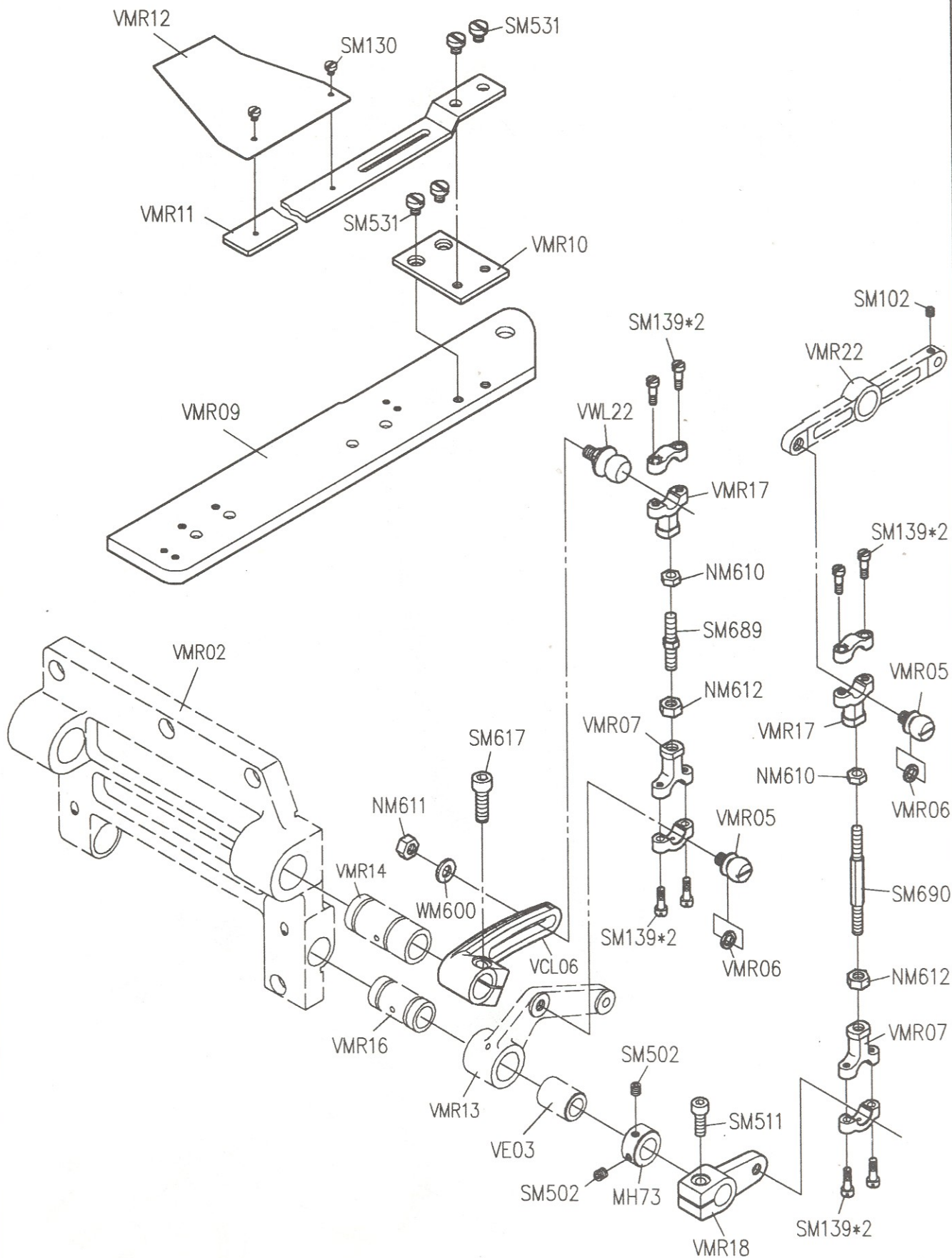
# PARTS LIST FOR VMR(2) GROUP



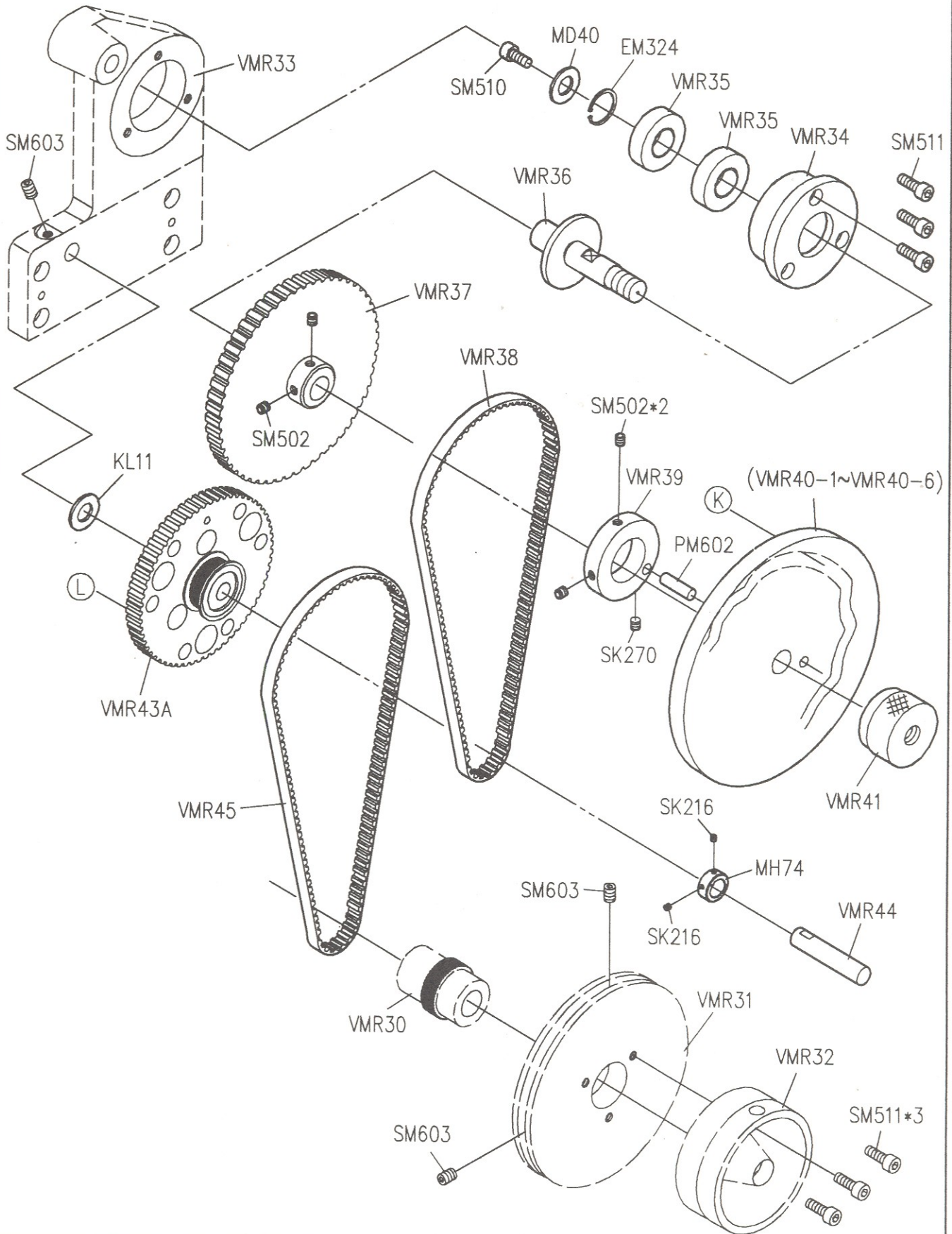
# PARTS LIST FOR VMR(3) GROUP



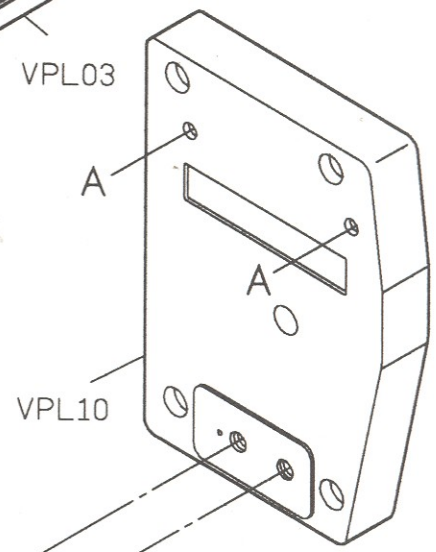
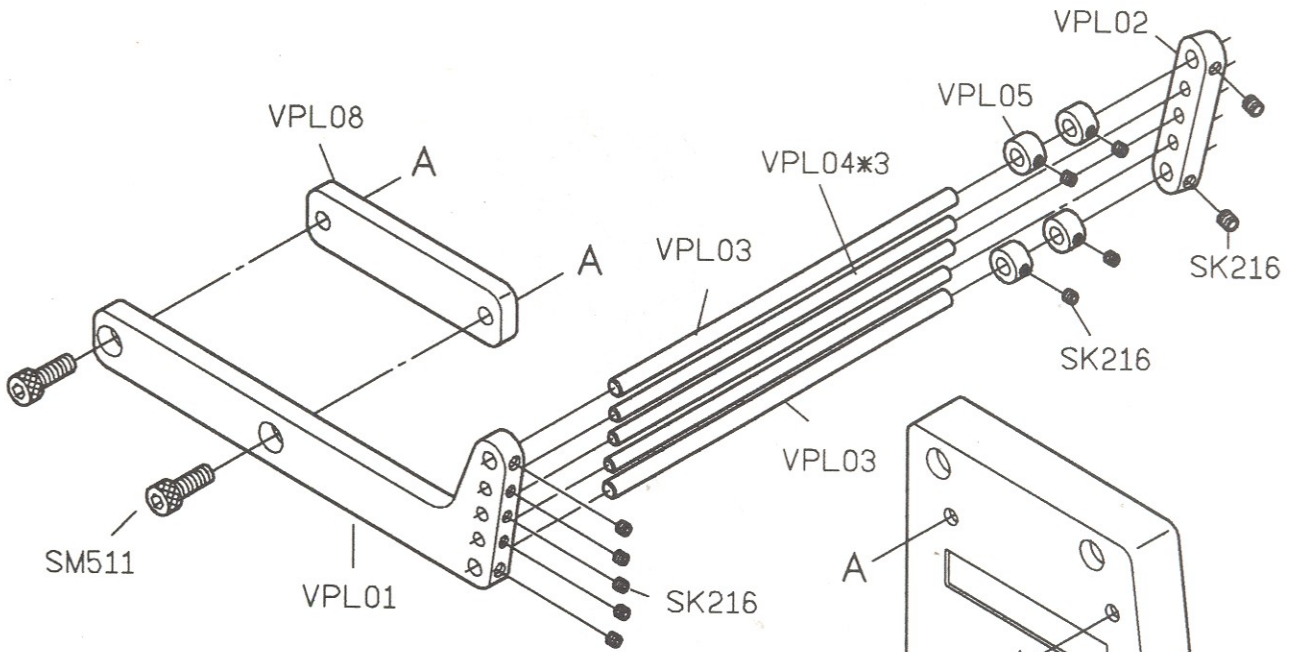
# PARTS LIST FOR VMR(4) GROUP



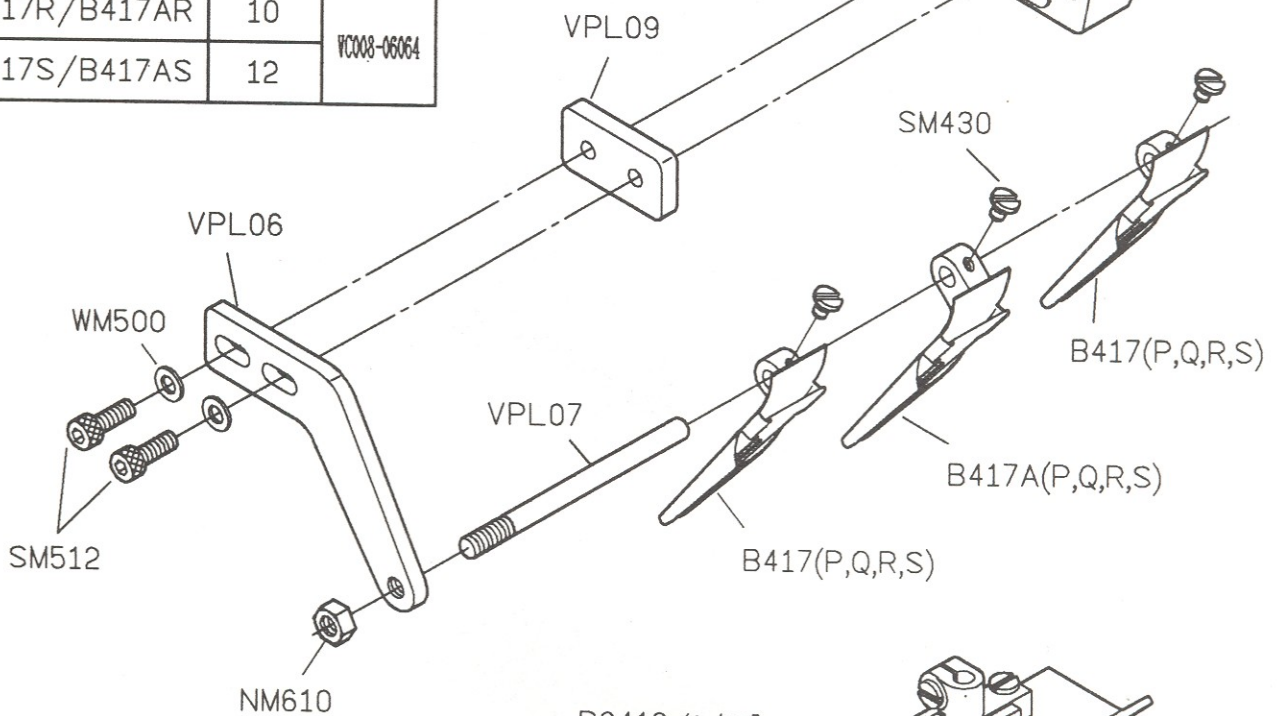
# PARTS LIST FOR VMR(5) GROUP



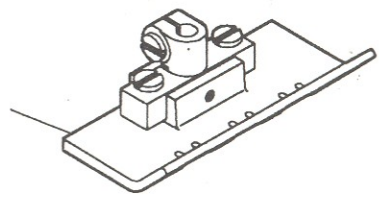
# PARTS LIST FOR VPL GROUP



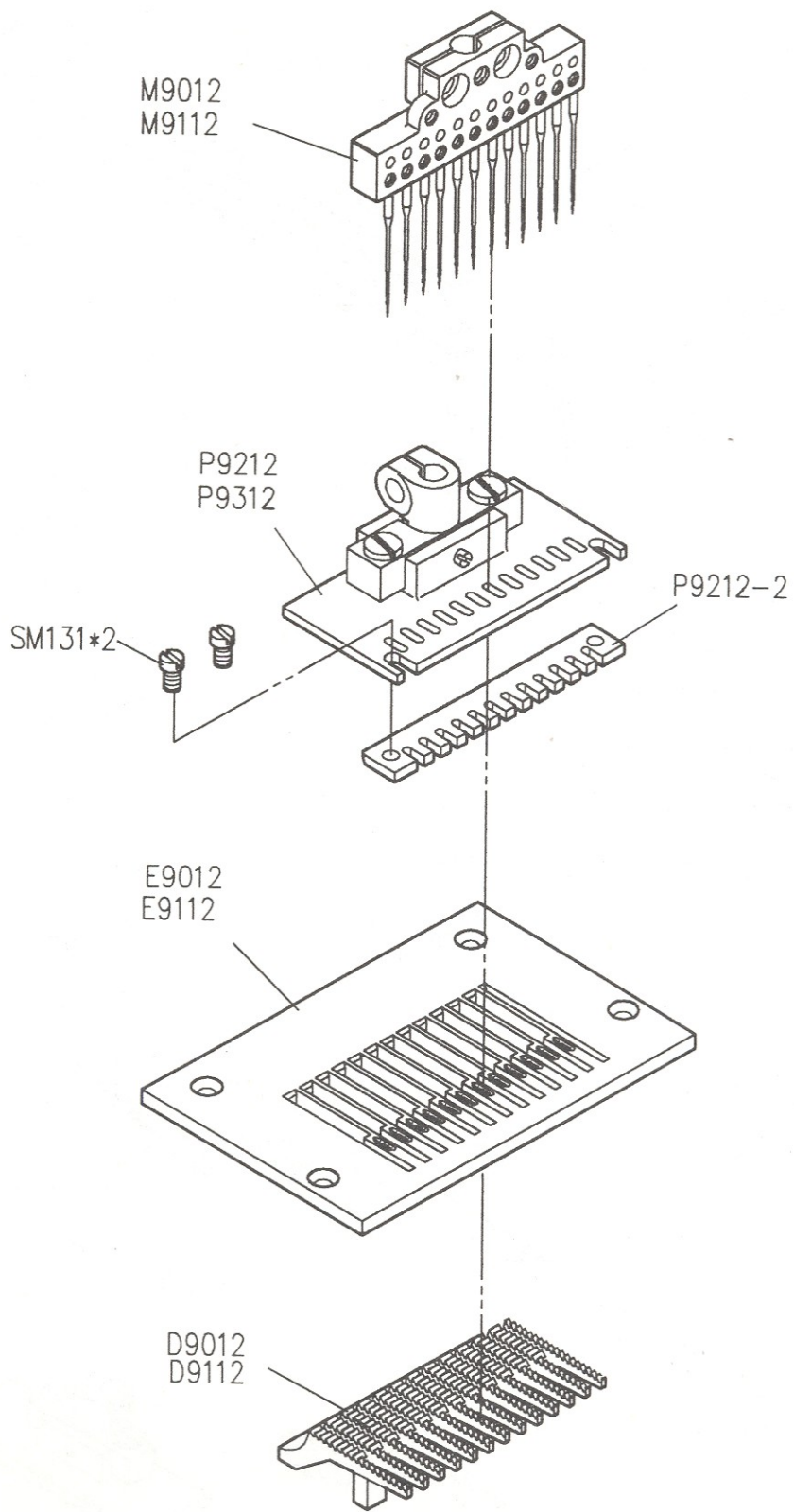
零件編號 PARTS NO.	完成尺寸 FINISHED	機型 MODEL
B417P/B417AP	8	VC008-06048
B417Q/B417AQ	9	
B417R/B417AR	10	VC008-06064
B417S/B417AS	12	



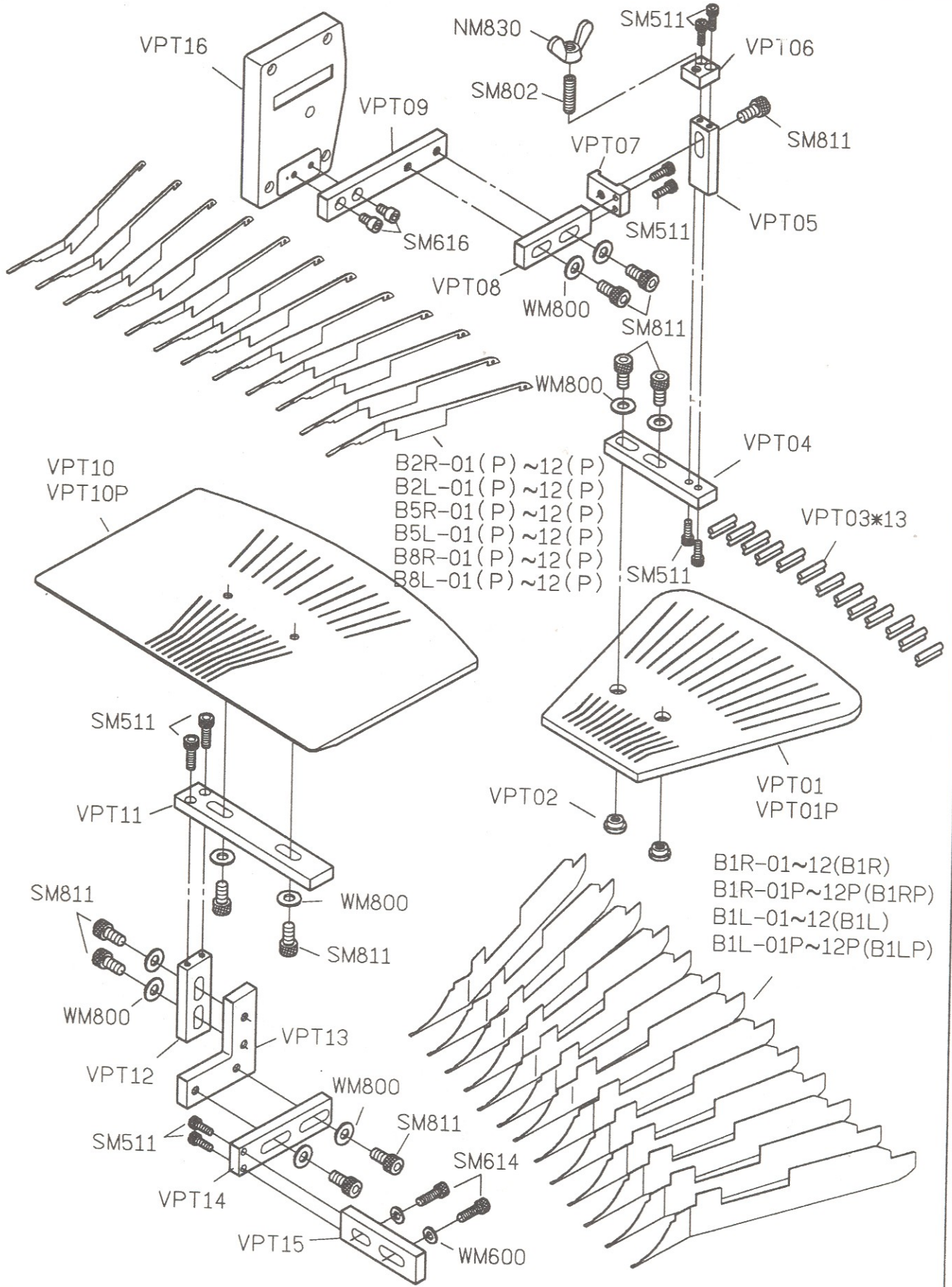
P9412 (3/16")  
P9512 (1/4")



# PARTS LIST FOR VPQ GROUP

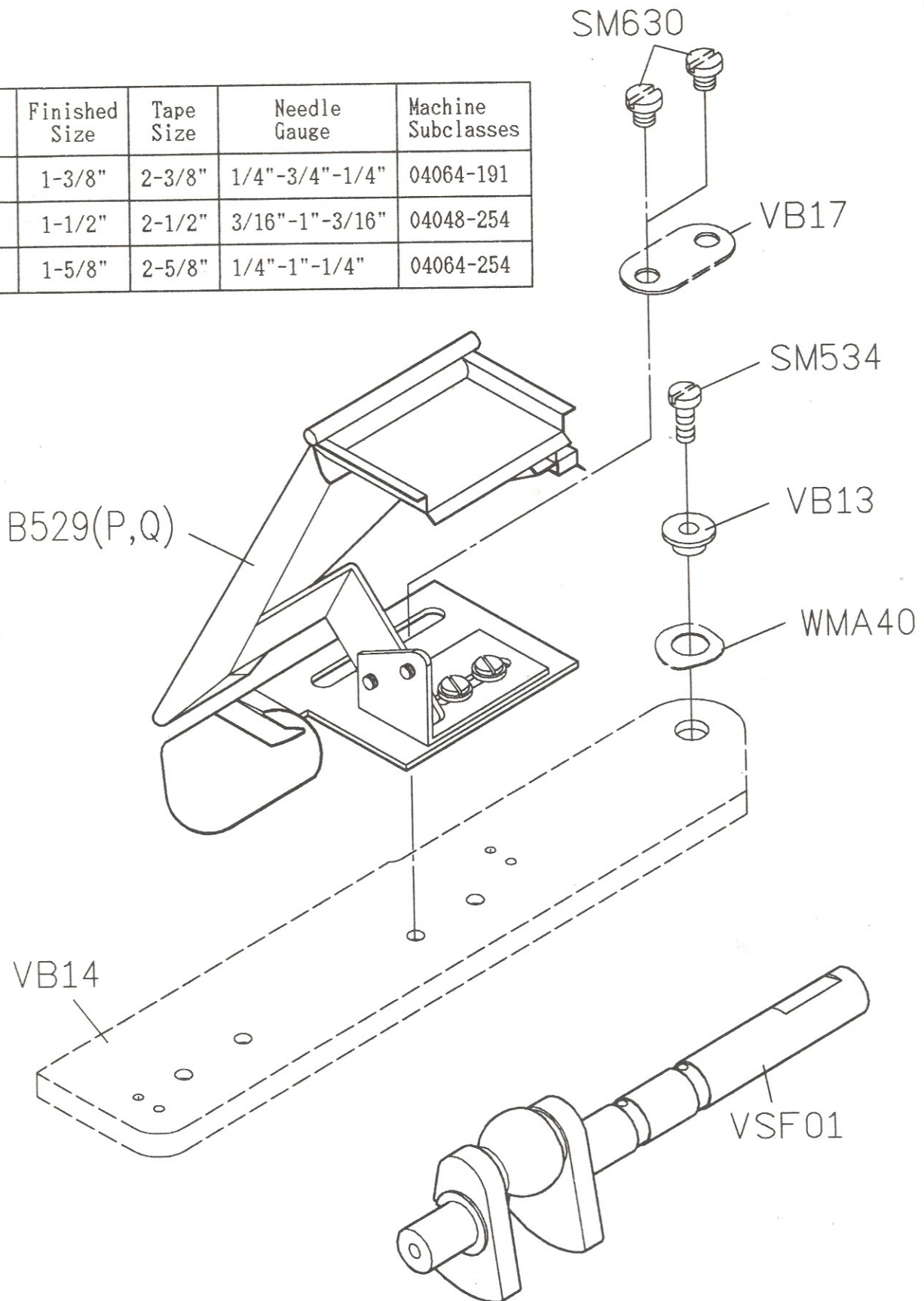


# PARTS LIST FOR VPT GROUP



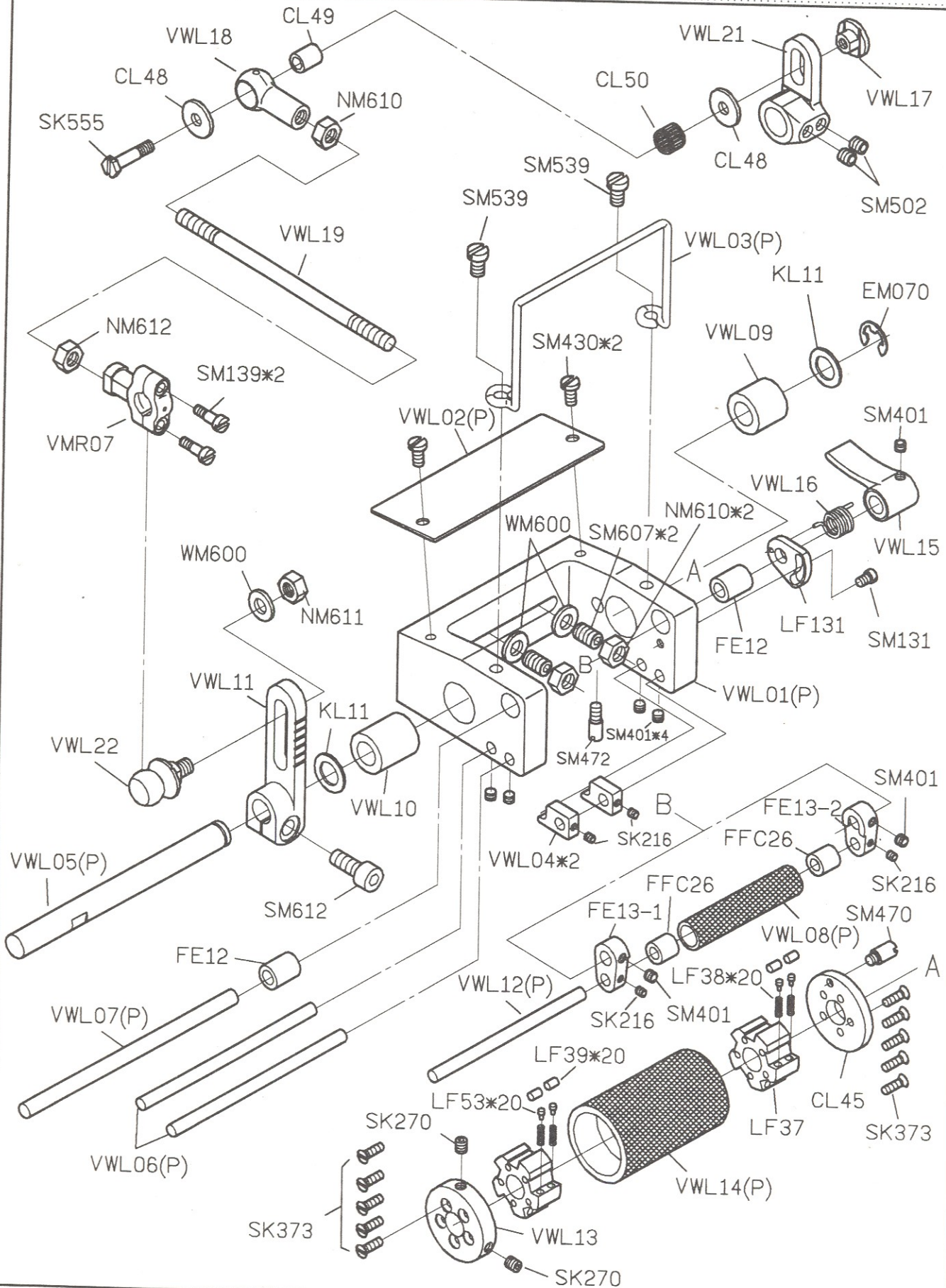
# PARTS LIST FOR VSF GROUP

Parts No.	Finished Size	Tape Size	Needle Gauge	Machine Subclasses
B529	1-3/8"	2-3/8"	1/4"-3/4"-1/4"	04064-191
B529P	1-1/2"	2-1/2"	3/16"-1"-3/16"	04048-254
B529Q	1-5/8"	2-5/8"	1/4"-1"-1/4"	04064-254





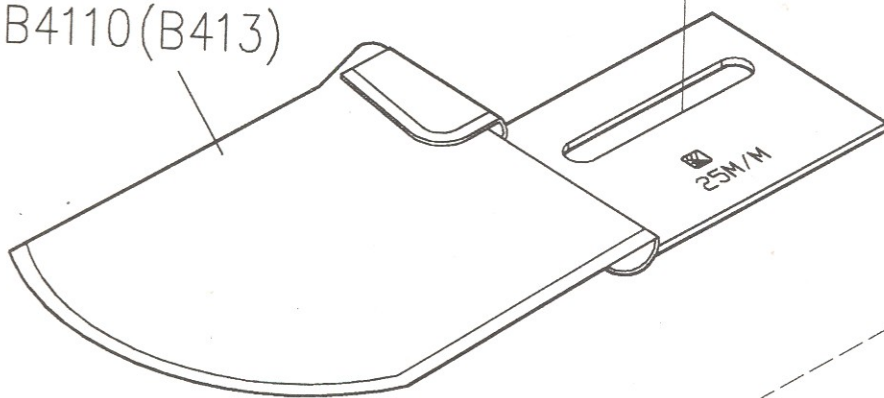
# PARTS LIST FOR VWL GROUP



# PARTS LIST FOR VWL(2) GROUP

Parts No.	Waist Band Width After Binding	Elastic Width Before Binding	Machine Model
B411	33mm	31mm	VC008-095
B411P	30mm	28mm	VC008-085
B411Q	42mm	40mm	VC008-127
B411R	25mm	23mm	VC008-064
B411S	36mm	34mm	VC008-106
B413	Elastic width from 1" to max.1-1/2" (25mm~38mm)		

B4110(B413)



VB14

VB15

SM130

VB16

SM130

A

VB17

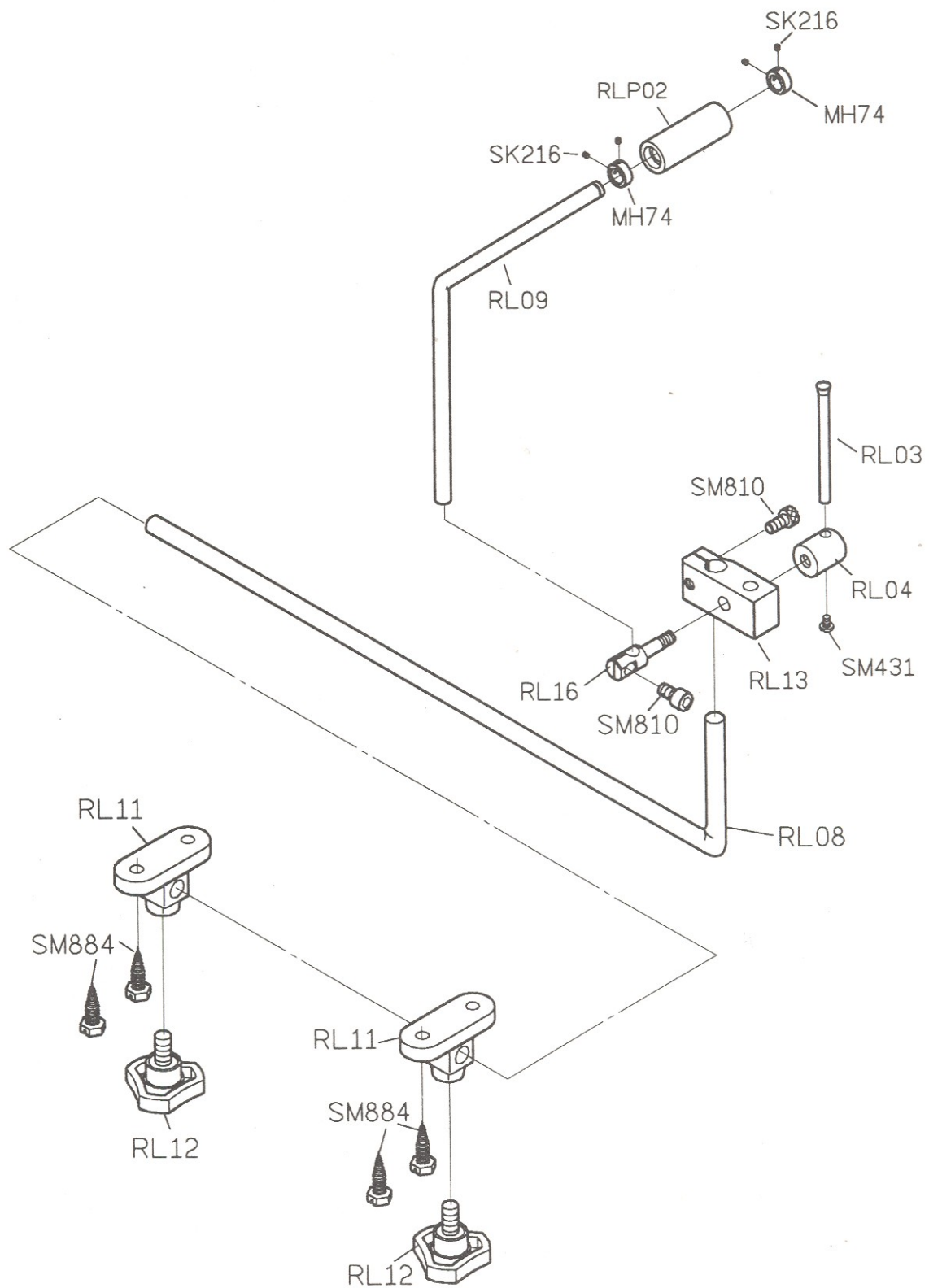
SM534

VB13

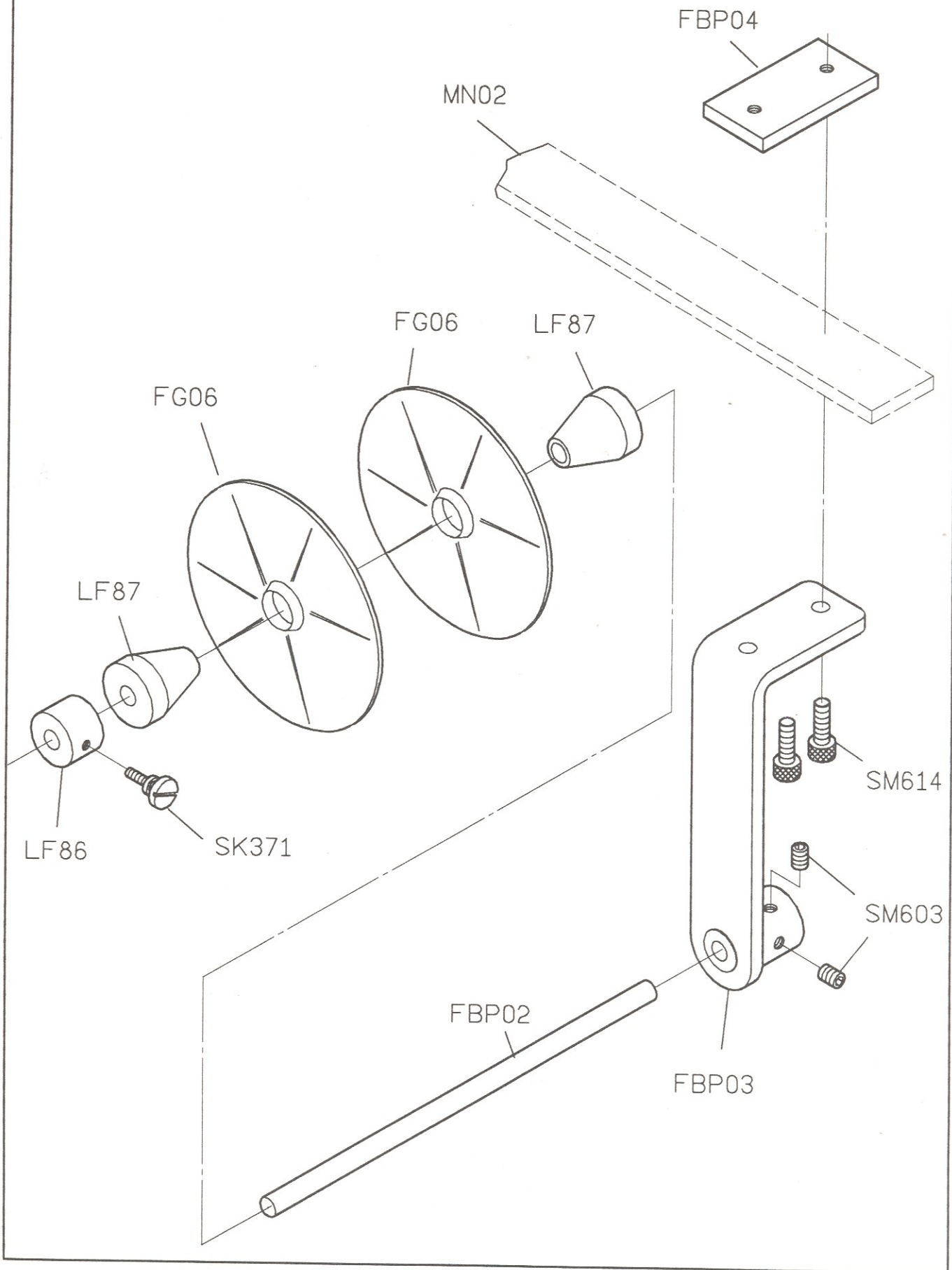
WMA40

SM630

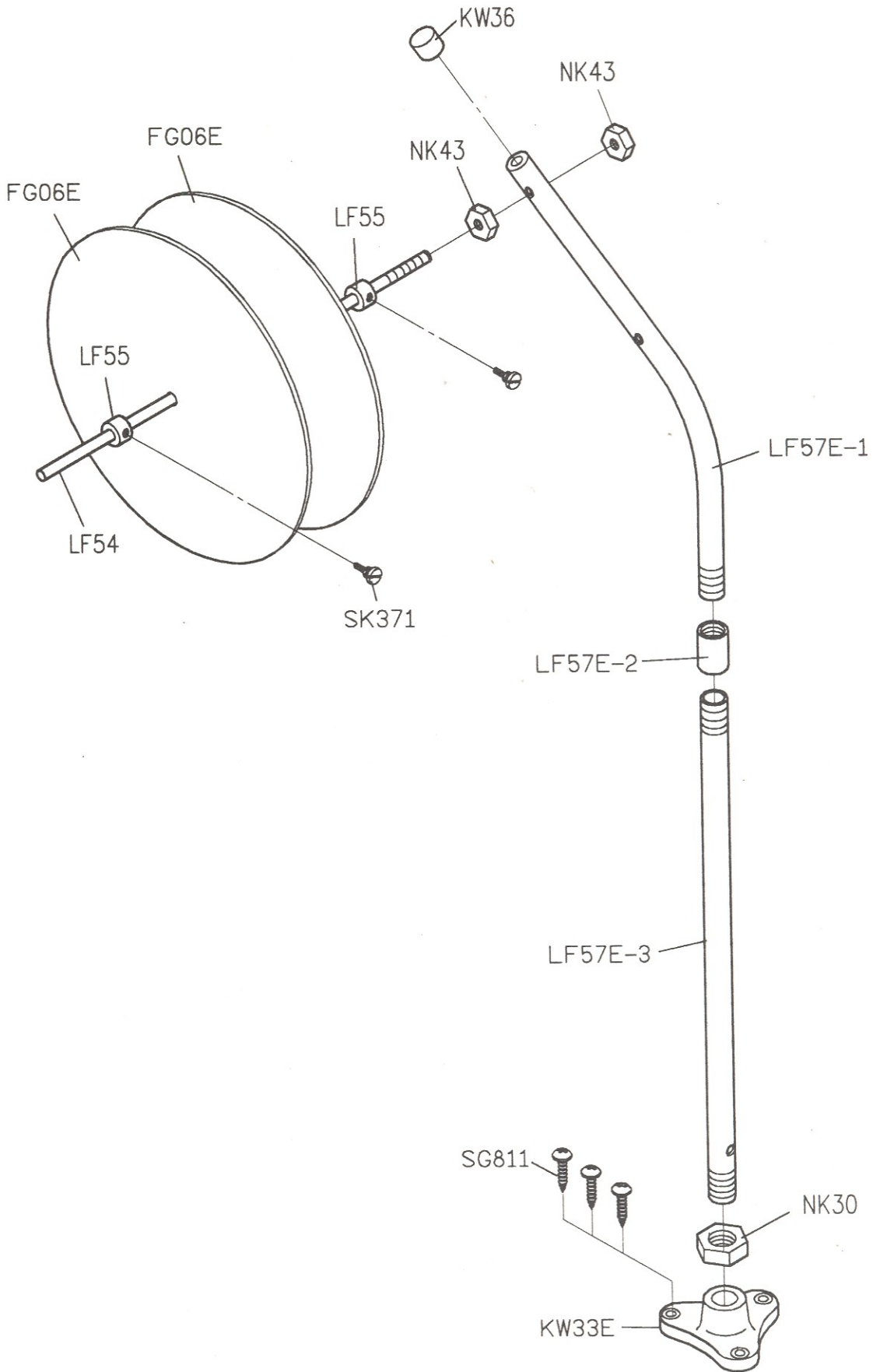
# PARTS LIST FOR VWL (3) GROUP



# PARTS LIST FOR FH GROUP

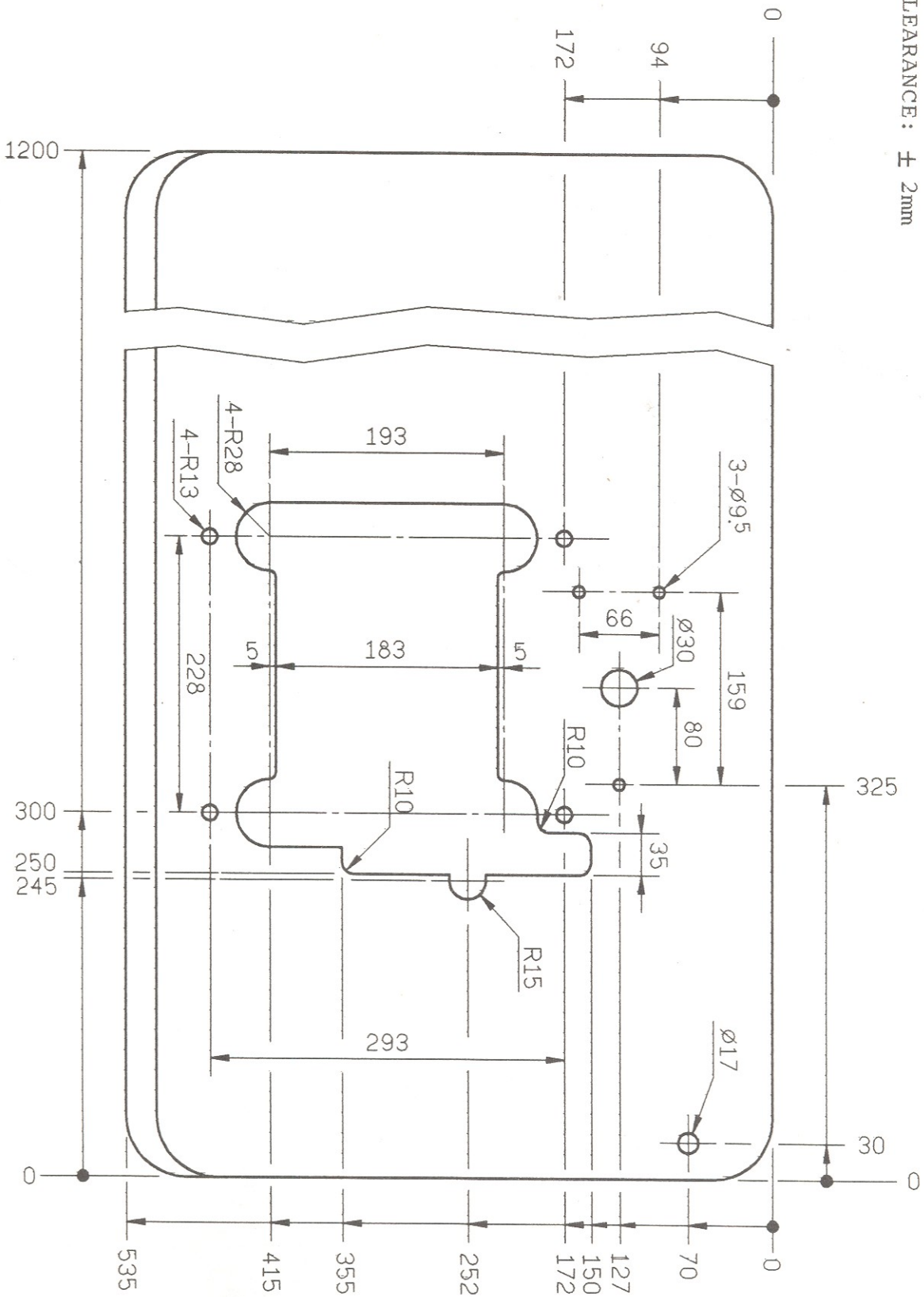


# PARTS LIST FOR LSA GROUP



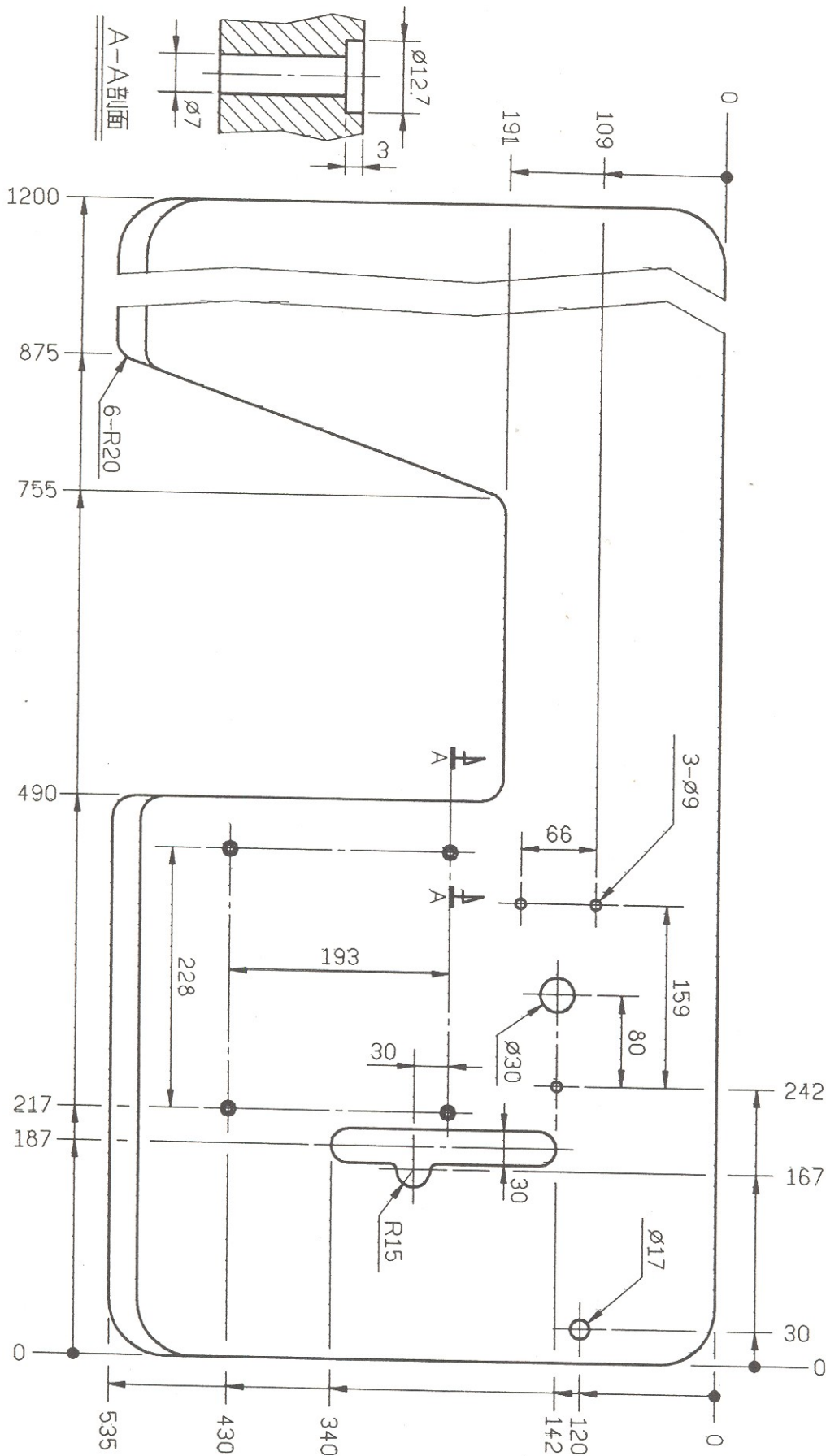
# TABLE CUT-OUT OF CYLINDER BED VC008-T1

SEMI-SUBMERGED INSTALLATION  
 FOR VC008-04XXX MODELS  
 UNIT: mm  
 CLEARANCE: ± 2mm



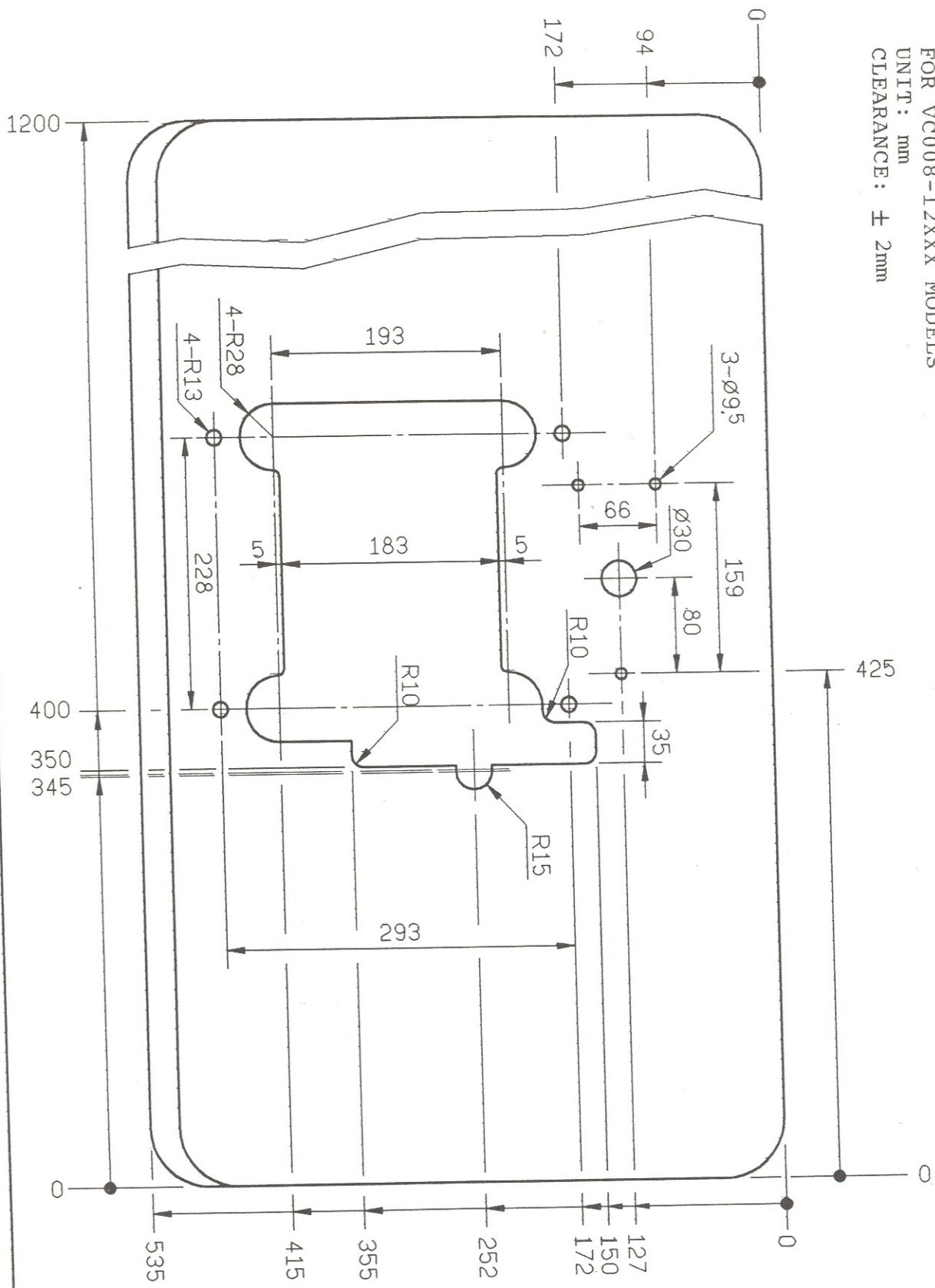
# TABLE CUT-OUT OF CYLINDER BED VC008-T2

INSTALLATION ON TABLE TOP  
 FOR VC008-04XXX MODELS  
 UNIT: mm  
 CLEARANCE:  $\pm 2$ mm



# TABLE CUT-OUT OF CYLINDER BED VC008-T3

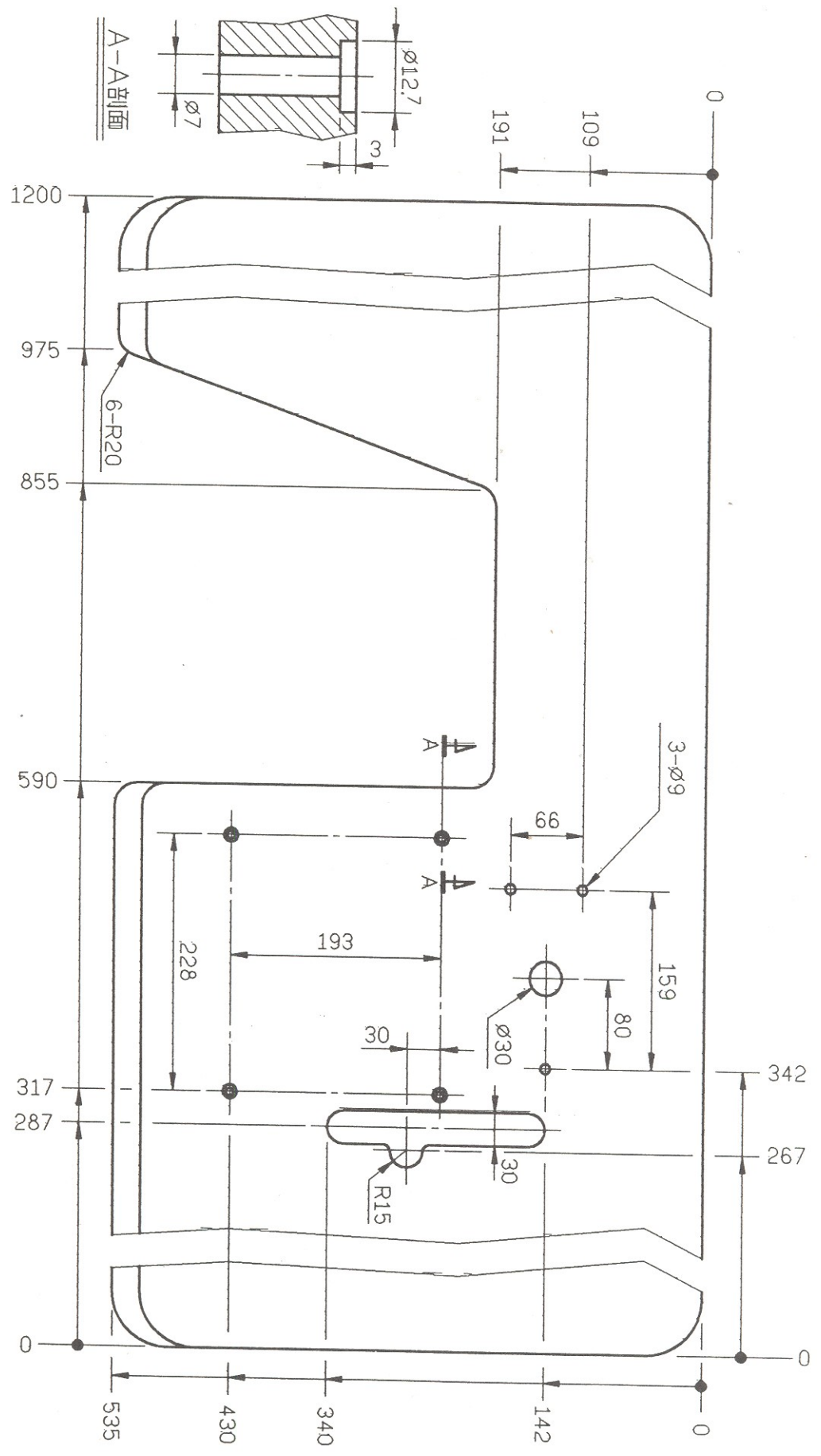
SEMI-SUBMERGED INSTALLATION  
 FOR VC008-12XXX MODELS  
 UNIT: mm  
 CLEARANCE: ± 2mm



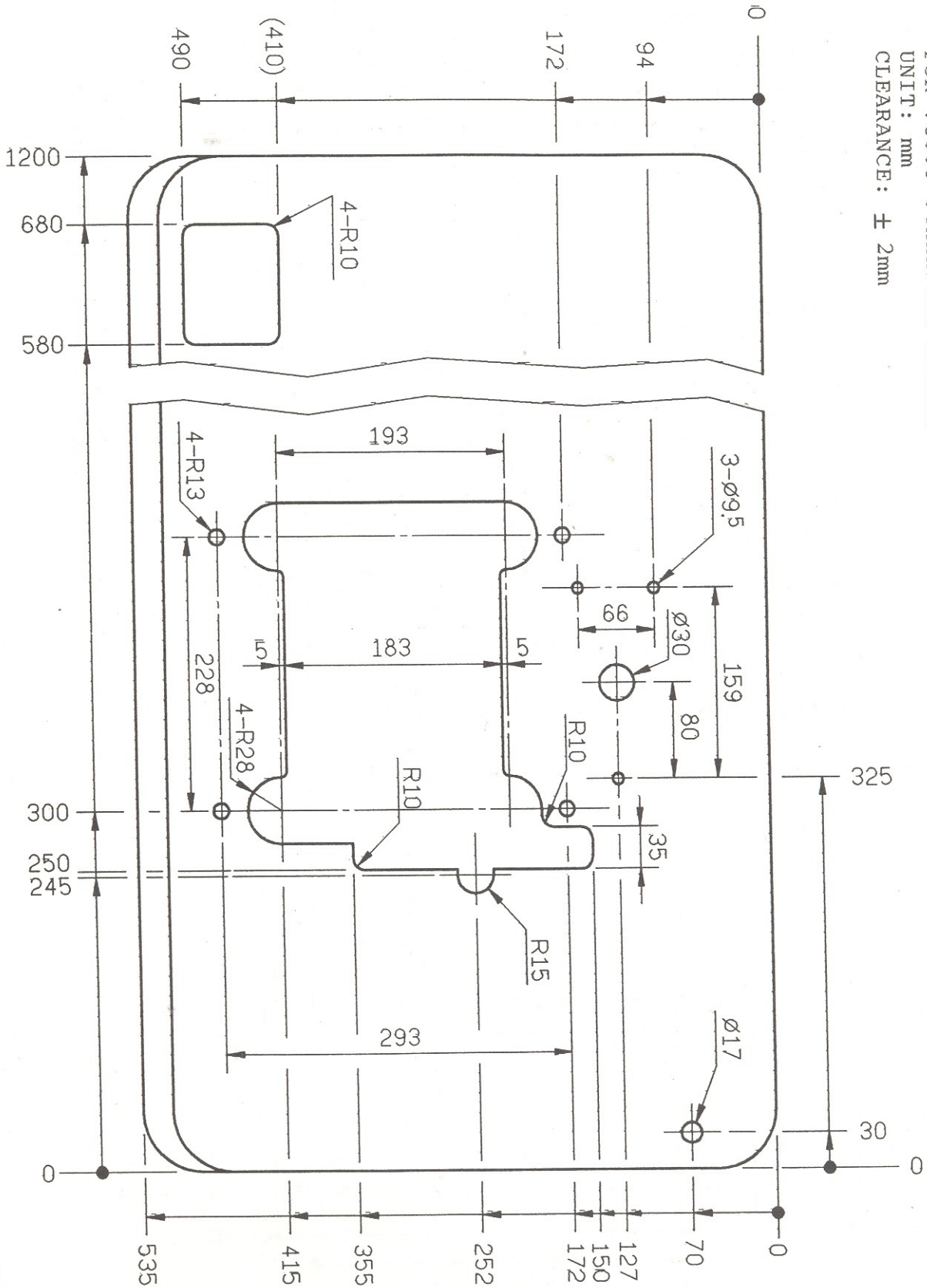


# TABLE CUT-OUT OF CYLINDER BED VC008-T4

INSTALLATION ON TABLE TOP  
 FOR VC008-12XXX MODELS  
 UNIT : mm  
 CLEARANCE :  $\pm 2$ mm



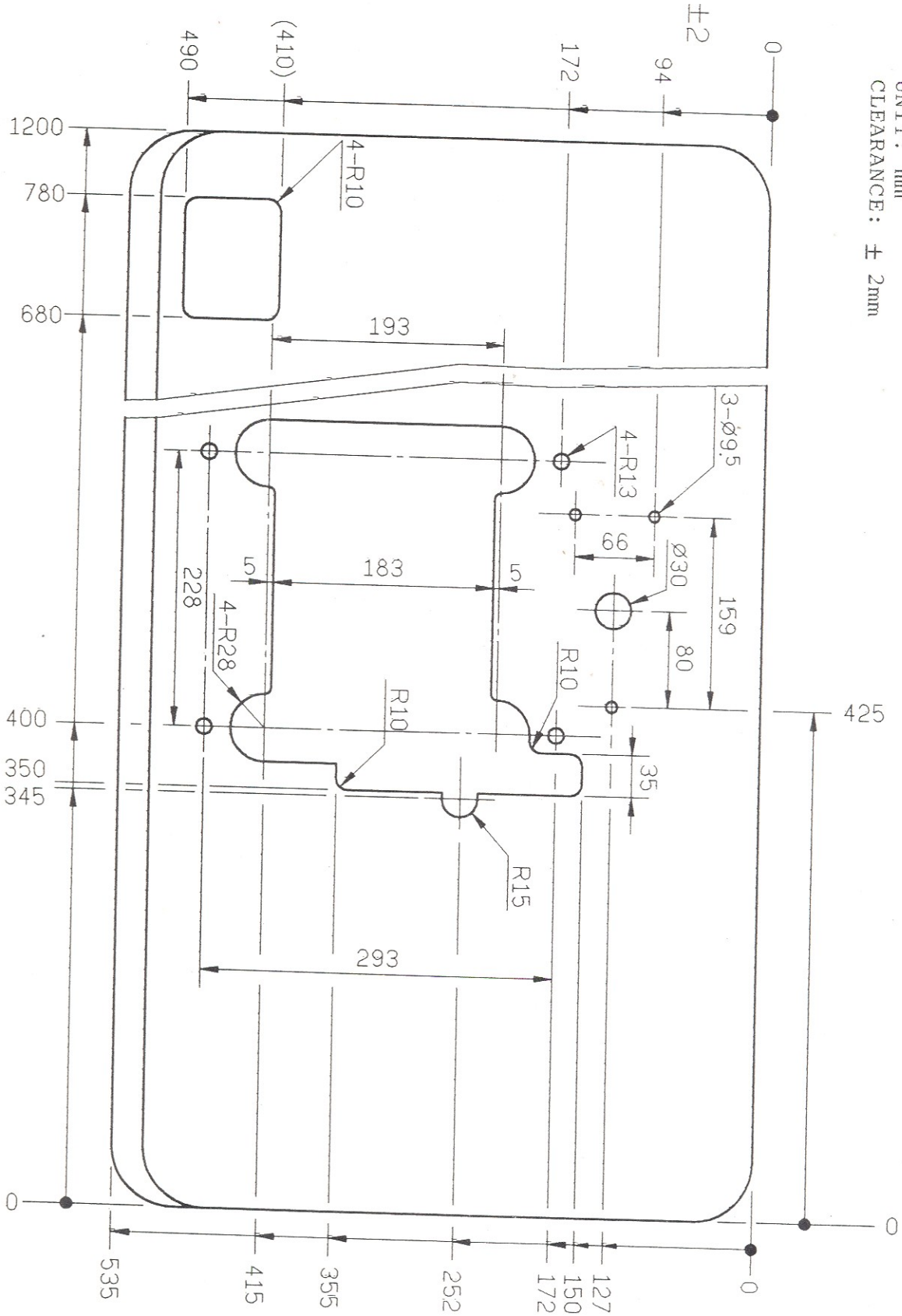
# TABLE CUT-OUT OF CYLINDER BED VC008-T5



SEMI-SUBMERGED INSTALLATION  
FOR VC008-04XXX/VWL MODELS  
UNIT : mm  
CLEARANCE : ± 2mm

# TABLE CUT-OUT OF CYLINDER BED VC008-T6

SEMI-SUBMERGED INSTALLATION  
 FOR VC008-12XXX/VWL MODELS  
 UNIT : mm  
 CLEARANCE : ± 2mm



# SIRUBA®