

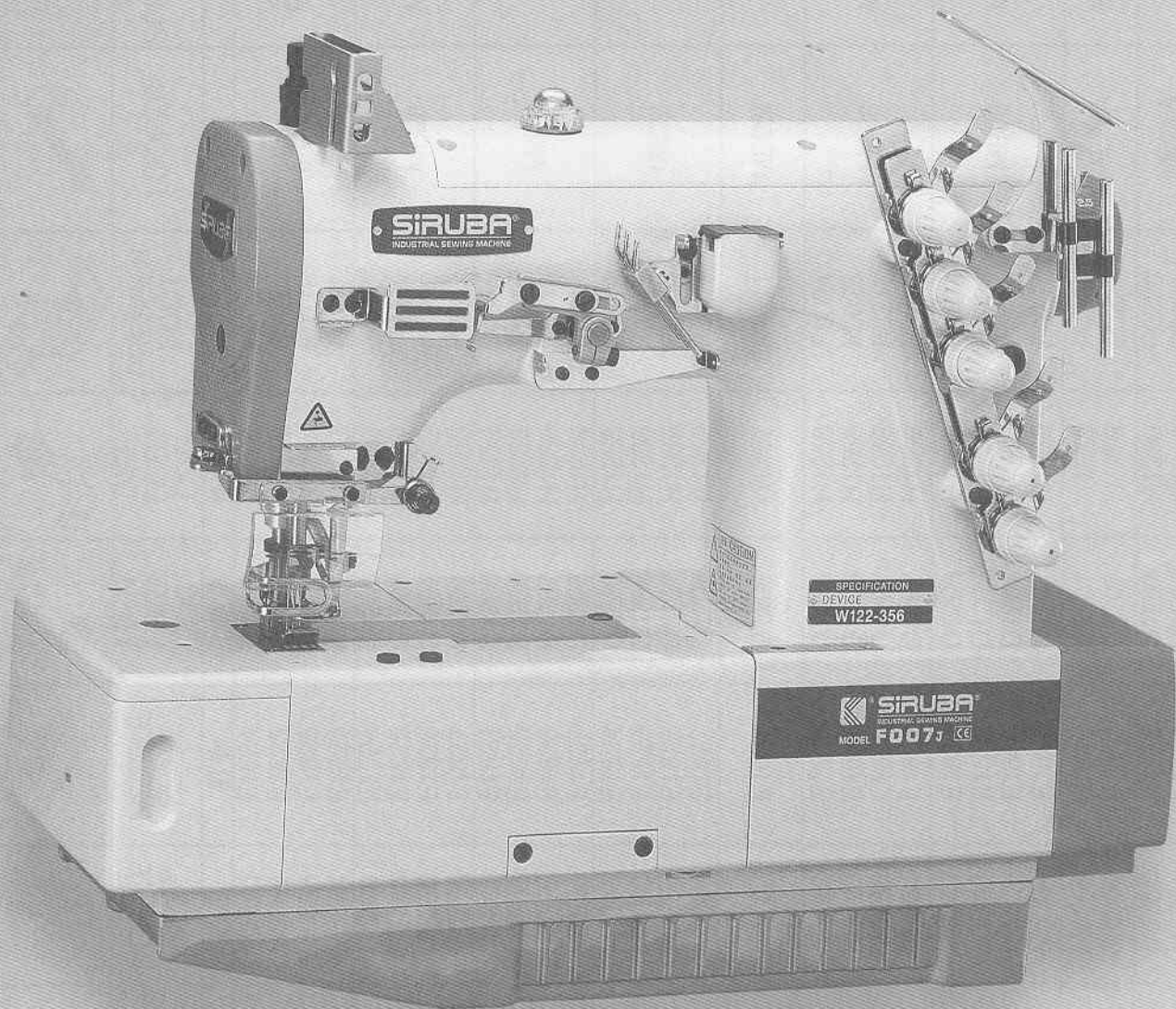
SIRUBA®

銀箭牌工業用縫紉機

INDUSTRIAL SEWING MACHINE

F007J

零件圖 PARTS LIST



AM - ORIGINAL

CE

高林股份有限公司
KAULIN MFG. CO., LTD.

MODEL	SUB-CLASS	NEEDLE CLAMP	NEEDLE PLATE	MAIN FEED DOG	DIFF FEED DOG	PRESSER FOOT	LOOPER	SPREADER	CAM	NEEDLE
機型	規格	針座	針板	主送具	差送具	押具	勾針	上叉	偏心凸輪	針號
F007J-W122	240 248 356 364	M5240 M5248 M5356 M5364	E1524 E1525 E1826 E1827	D1206 D1206 D1207 D1207	H1258 H1258 H1259 H1259	P0024 P0025 P0216 P0217	ME28	MH41E	MF01-A	UY128GAS #11
F007J-W122 /UTG(UTJ)	240 248 356 364	M5240 M5248 M5356 M5364	E1524 E1525 E1826 E1827	D1206 D1206 D1207 D1207	H1258 H1258 H1259 H1259	P0024 P0025 P0216 P0217	ME28	MH41E	MF01-A	UY128GAS #11
F007J-U122	240 248 356 364	M5240 M5248 M5356 M5364	E1524 E1525 E1826 E1827	D1206 D1206 D1207 D1207	H1258 H1258 H1259 H1259	P0314 P0315 P0416 P0417	ME28	-----	MF01-A	UY128GAS #11
F007J-U122 /UTH(UTK)	240 248 356 364	M5240 M5248 M5356 M5364	E1524 E1525 E1826 E1827	D1206 D1206 D1207 D1207	H1258 H1258 H1259 H1259	P0314 P0315 P0416 P0417	ME28	-----	MF01-A	UY128GAS #11
F007J-U122 /FP	232	M5232	E1623	D1206	H1257	P4011	ME28P	-----	MF91-A	UY128GAS #14
F007J-W123	240 248 356 364	M5240 M5248 M5356 M5364	E1534 E1535 E1836 E1837	D1206 D1206 D1207 D1207	H1258 H1258 H1259 H1259	P0024 P0025 P0216 P0217	ME28	MH41E	MF01-A	UY128GAS #11
F007J-W123 /UTG(UTJ)	240 248 356 364	M5240 M5248 M5356 M5364	E1534 E1535 E1836 E1837	D1206 D1206 D1207 D1207	H1258 H1258 H1259 H1259	P0024 P0025 P0216 P0217	ME28	MH41E	MF01-A	UY128GAS #11
F007J-W162	356 364	M5356 M5364	E1846 E1847	D1207 D1207	H1259 H1259	P0226 P0227	ME28A	MH41E	MF91-A	UY128GAS #14~16
F007J-U162	356 364	M5356 M5364	E1846 E1847	D1207 D1207	H1259 H1259	P0226 P0227	ME28A	-----	MF91-A	UY128GAS #14~16

規格件表 . CONVERSION CHART - 2/4

MODEL 機型	SUB-CLASS 規格	NEEDLE CLAMP 針座	NEEDLE PLATE 針板	MAIN FEED DOG 主送具	DIFF. FEED DOG 差送具	PRESSER FOOT 押具	LOOPER 勾針	SPREADER 上叉	CAM 偏心凸輪	NEEDLE 針號
F007J-W162 /UTG(UTJ)	356 364	M5356 M5364	E1846 E1847	D1207	H1259	P0226 P0227	ME28A	MH14E	MF91-A	UY128GAS #14 ~ 16
F007J-U162 /UTH(UTK)	356 364	M5356 M5364	E1846 E1847	D1207	H1259	P0226 P0227	ME28A	-----	MF91-A	UY128GAS #14 ~ 16
F007J-W222 /FQ	240 248 356 364	M5240 M5248 M5356 M5364	E3024 E3025 E3326 E3327	D1215 D1215 D1216 D1216	H1261 H1261 H1262 H1262	P1814 P1815 P2116 P2117	ME28	MH41E	MF01-A	UY128GAS #11
F007J-W222 /FQ/FEC(FAC)	240 248 356 364	M5240 M5248 M5356 M5364	E3024 E3025 E3326 E3327	D1215 D1215 D1216 D1216	H1261 H1261 H1262 H1262	P1814 P1815 P2116 P2117	ME28	MH41E	MF01-A	UY128GAS #11
F007J-U222 /FQ	240 248 356 364	M5240 M5248 M5356 M5364	E3024 E3025 E3326 E3327	D1215 D1215 D1216 D1216	H1261 H1261 H1262 H1262	P2314 P2315 P2616 P2617	ME28	-----	MF01-A	UY128GAS #11
F007J-W222A /FQ/FEC(FAC)	240 248 356 364	M5240 M5248 M5356 M5364	E3124 E3125 E3426 E3427	D1315 D1315 D1316 D1316	H1261 H1261 H1262 H1262	P1914 P1915 P2216 P2217	ME28	MH41E	MF01-A	UY128GAS #11
F007J-W222 /FFD(FFP)	240 248 356 364	M5240 M5248 M5356 M5364	E3024 E3025 E3326 E3327	D1215 D1215 D1216 D1216	H1261 H1261 H1262 H1262	P1814 P1815 P2116 P2117	ME28	MH41E	MF01-A	UY128GAS #11
F007J-U222 /FFD(FFP)	240 248 356 364	M5240 M5248 M5356 M5364	E3024 E3025 E3326 E3327	D1215 D1215 D1216 D1216	H1261 H1261 H1262 H1262	P2314 P2315 P2616 P2617	ME28	-----	MF01-A	UY128GAS #11
F007J-W222 /FSM	240-4 248-4 364-4	M5240P M5248P M5364P	E3724 E3725 E3727	D1516	H1262	P2714 P2715 P2717	ME28	MH41E	MF01-A	UY128GAS #11

MODEL 機型	SUB-CLASS 規格	NEEDLE CLAMP 針座	NEEDLE PLATE 針板	MAIN FEED DOG 主送具	DIFF. FEED DOG 差送具	PRESSER FOOT 押具	LOOPER 勾針	SPREADER 上叉	CAM 偏心凸輪	NEEDLE 針號
F007J-W322 /FDC	356 364	M5356 M5364	E4826 E4827	D1207	H1359	P1406 P1407	ME28	MH41E	MF01-A	UY128GAS #11
F007J-W322 /UTG(UTJ)/FDC	356 364	M5356 M5364	E4826 E4827	D1207	H1359	P1406 P1407	ME28	MH41E	MF01-A	UY128GAS #11
F007J-U322 /FDC	356 364	M5356 M5364	E4826 E4827	D1207	H1359	P1606 P1607	ME28	-----	MF01-A	UY128GAS #11
F007J-U322 /UTH(UTK)/FDC	356 364	M5356 M5364	E4826 E4827	D1207	H1359	P1606 P1607	ME28	-----	MF01-A	UY128GAS #11
F007J-W322 /FDE	356 364	M5356 M5364	E4836M E4837M	D1207	H1459	P2406 P2407	ME28	MH41E	MF01-A	UY128GAS #11
F007J-W322 /UTG(UTJ)/FDE	356 364	M5356 M5364	E4836M E4837M	D1207	H1459	P2406 P2407	ME28	MH41E	MF01-A	UY128GAS #11
F007J-U322 /FDE	356 364	M5356 M5364	E4836M E4837M	D1207	H1459	P2606 P2607	ME28	-----	MF01-A	UY128GAS #11
F007J-U322 /UTH(UTK)/FDE	356 364	M5356 M5364	E4836M E4837M	D1207	H1459	P2606 P2607	ME28	-----	MF01-A	UY128GAS #11
F007J-W522 /FE(FFC)/FR	240 248 356 364	M5240 M5248 M5356 M5364	E6024 E6025 E6326 E6327	D2221 D2221 D2222 D2222	H2267 H2267 H2268 H2268	P2814P P2815P P3116P P3117P	ME28	MH41E	MF01-A	UY128GAS #11
F007J-U522 /FE(FFC)/FR	240 248 356 364	M5240 M5248 M5356 M5364	E6024 E6025 E6326 E6327	D2221 D2221 D2222 D2222	H2267 H2267 H2268 H2268	P2814P P2815P P3116P P3117P	ME28	-----	MF01-A	UY128GAS #11

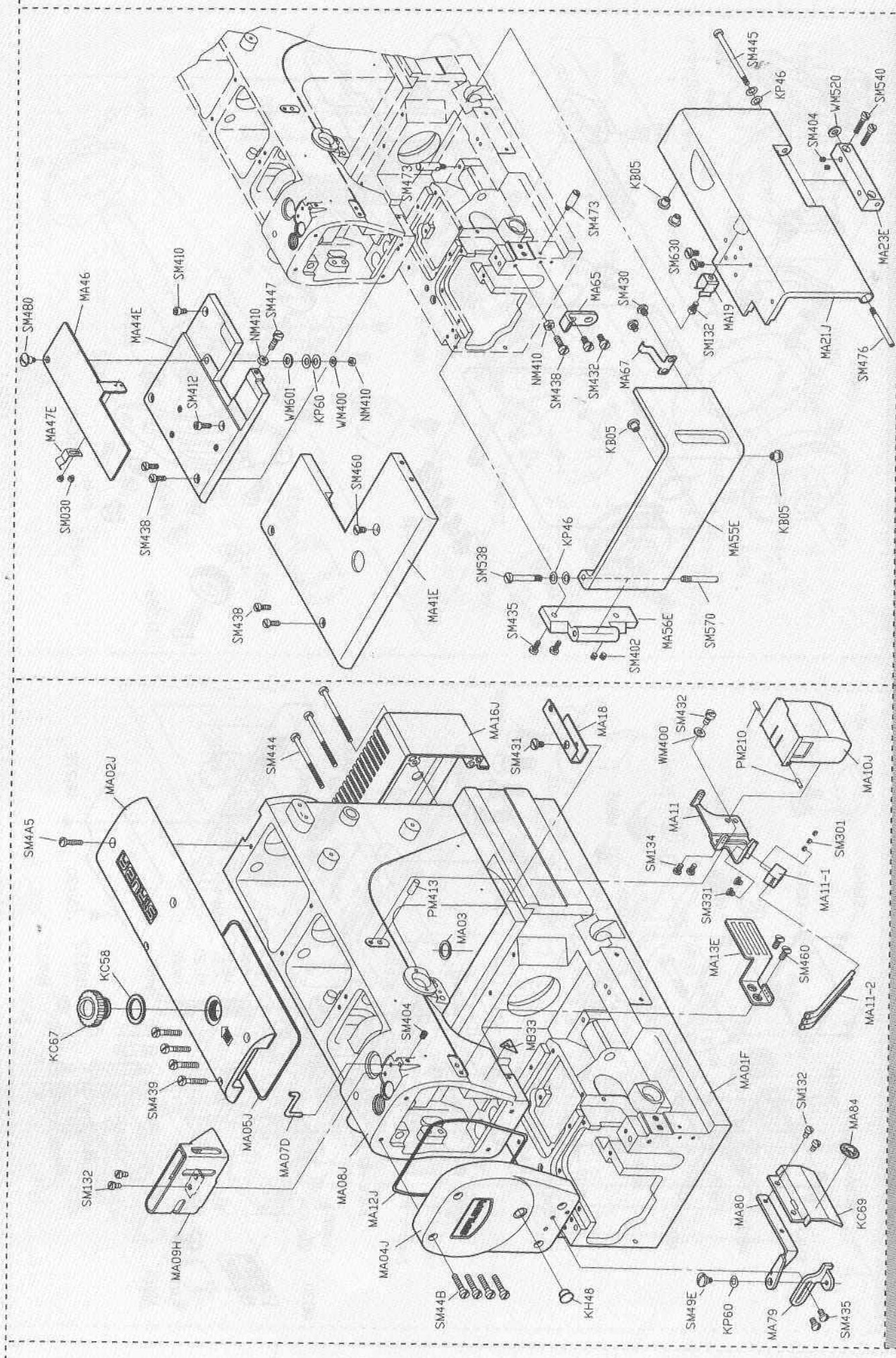
規格件表 . CONVERSION CHART - 4/4

MODEL	SUB-CLASS	NEEDLE CLAMP	NEEDLE PLATE	MAIN FEED DOG	DIFF. FEED DOG	PRESSER FOOT	LOOPER	SPREADER	CAM	NEEDLE
機型	規格	針座	針板	主送具	差送具	押具	勾針	上叉	偏心凸輪	針號
F007J-W512 /FE(FFC)	240	M5240	E1524	D1206	H1258	P2914	ME28	MH41E	MF01-A	UY128GAS #11
	248	M5248	E1525	D1206	H1258	P2915				
	356	M5356	E1826	D1207	H1259	P3216				
	364	M5364	E1827	D1207	H1259	P3217				
F007J-U512 /FE(FFC)	240	M5240	E1524	D1206	H1258	P3414	ME28	-----	MF01-A	UY128GAS #11
	248	M5248	E1525	D1206	H1258	P3415				
	356	M5356	E1826	D1207	H1259	P3716				
	364	M5364	E1827	D1207	H1259	P3717				
F007J-U613 /FBP	256	M5356	E1836L			P4000	ME28	-----	MF91-A	UY128GAS #14~18
	264	M5364	E1837L	D1207	H1259	P4001				UY128GAS #16~21
F007J-U712	264	M5264	E5827	D5207	H5259	P4117	ME28	-----	MF01-A	TV*3 #11 ~16
F007J-U712 /FSP	264	M5264	E5827	D5207	H5259	P5117	FS03/04	-----	MF01-A	TV*3 #11 ~16
F007J-U712 /FSR	264	M5264	E5927	D5307	H5359	P4217	FS03/04	-----	MF01-A	TV*7 #12 ~14
F007J-W722 /FY	388	M4388	E6828	D6207	H6259	P6117	FS03/04 /FY02	FY09	MF01-A	TV*7 #12
F007J-W922 /FW(FWP)	460	M5460	E1828	D1207	H1259	P2408	ME28	MH41E	MF01-A	SM1014B #10 (MY1014B#70 ,SY7256)

REMARK / 註 : F007J-W/U122A-356 USE / 該押具使用 P2406
 F007J-W/U122A-364 USE / 該押具使用 P2407

REMARK / 註 : W222A-FAC(FEC) SHORT CUTTING / 短切刀
 W222-FAC(FEC) REGULAR CUTTING / 長切刀

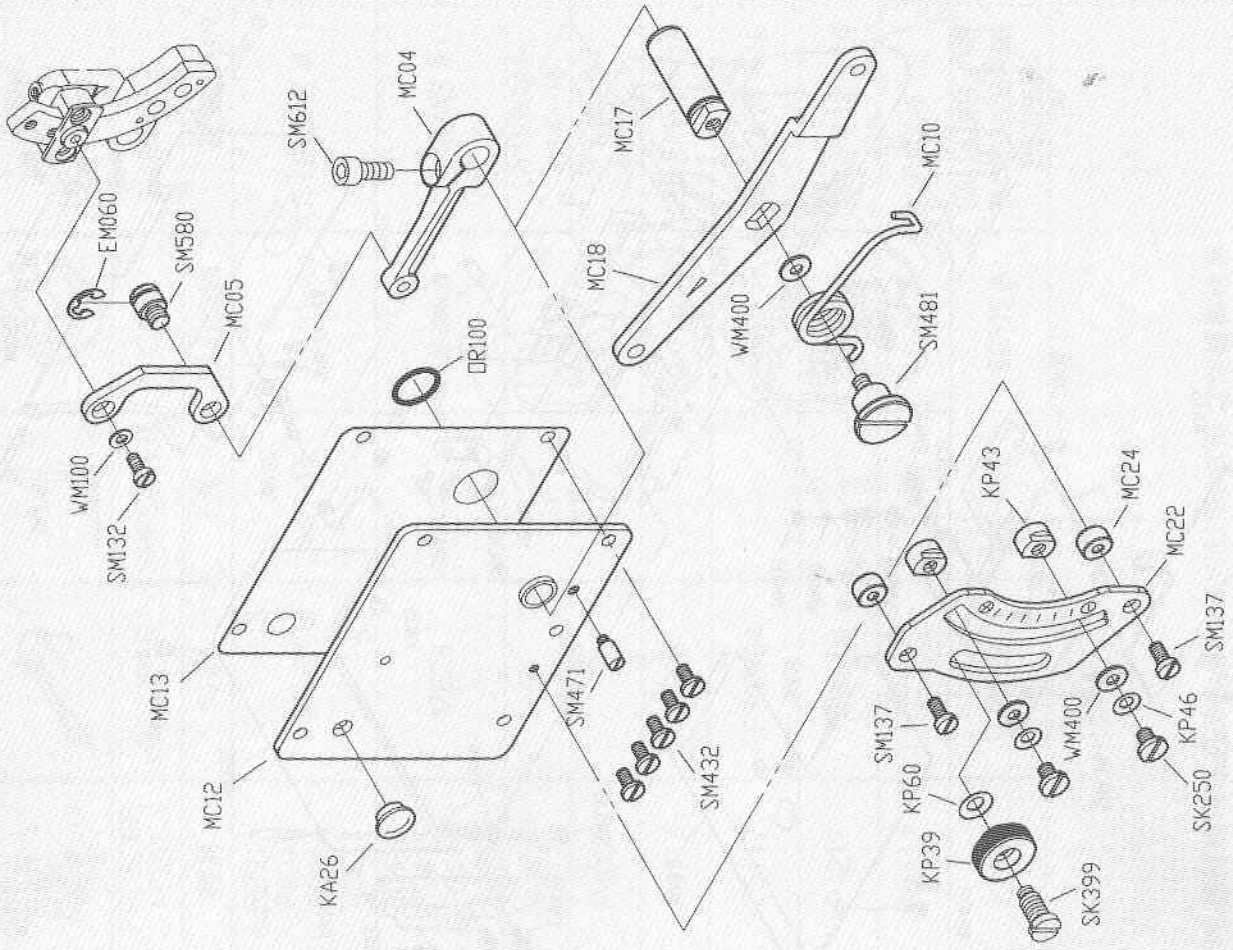
REMARK / 註 : F007J-W/U322A-356/FDC USE NEEDLE PLATE & FEED DOG OF /時,該針板與送具改用 F007J-W/U122-356 之針板與送具
 F007J-W/U322A-364/FDC USE NEEDLE PLATE & FEED DOG OF /時,該針板與送具改用 F007J-W/U122-364 之針板與送具



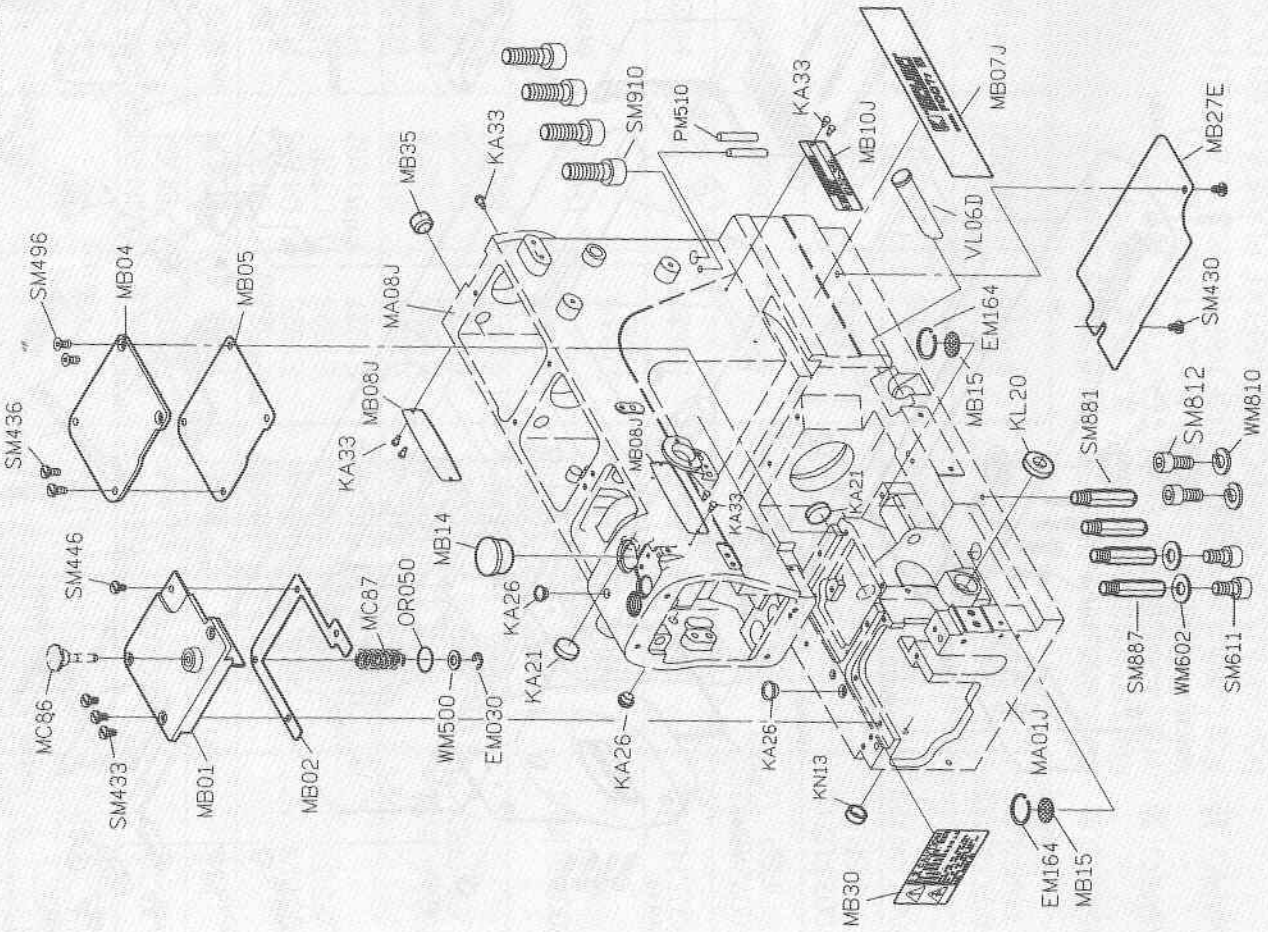
PARTS LIST FOR MA(2) GROUP

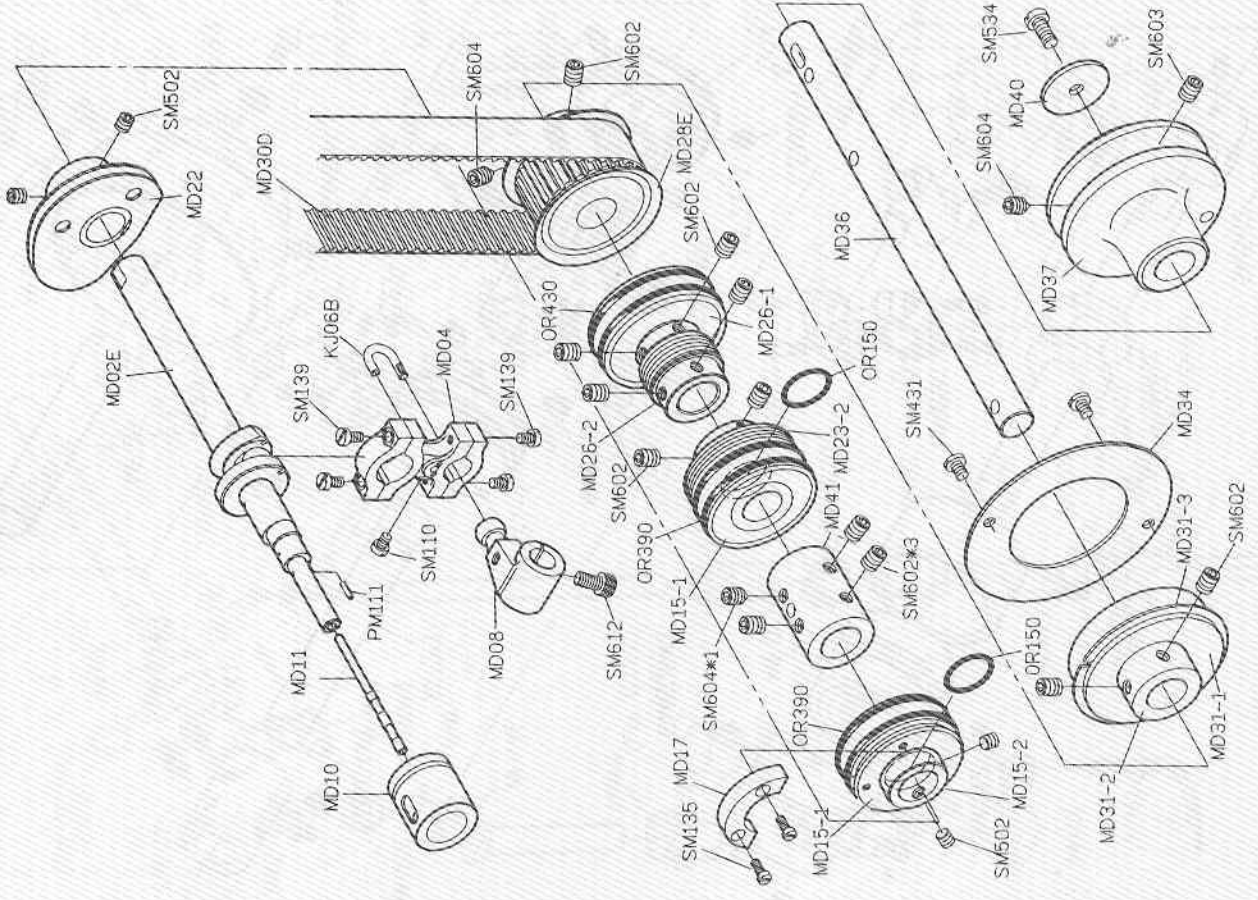
PARTS LIST FOR MA(1) GROUP

PARTS LIST FOR MC(1) GROUP

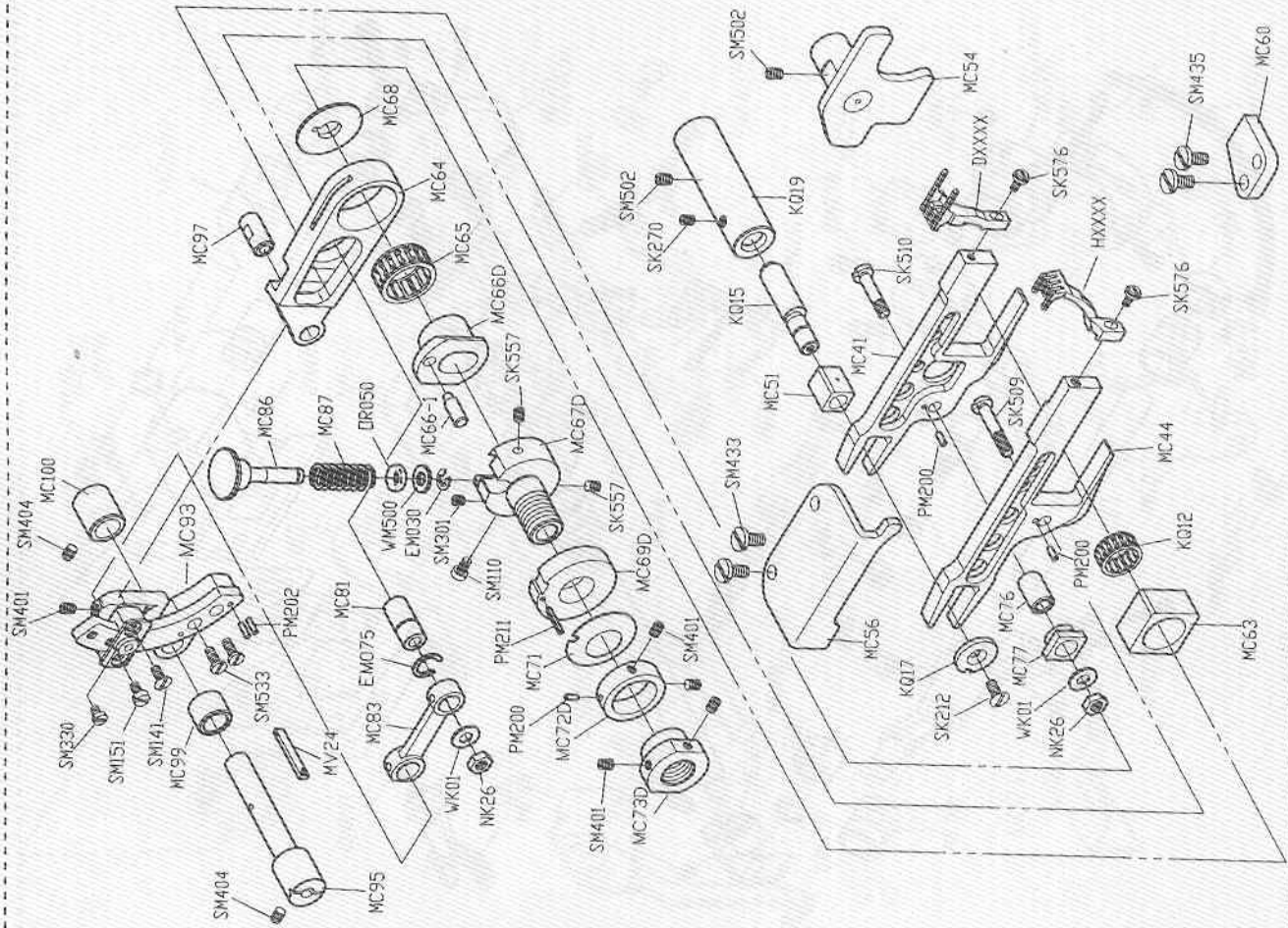


PARTS LIST FOR MB GROUP



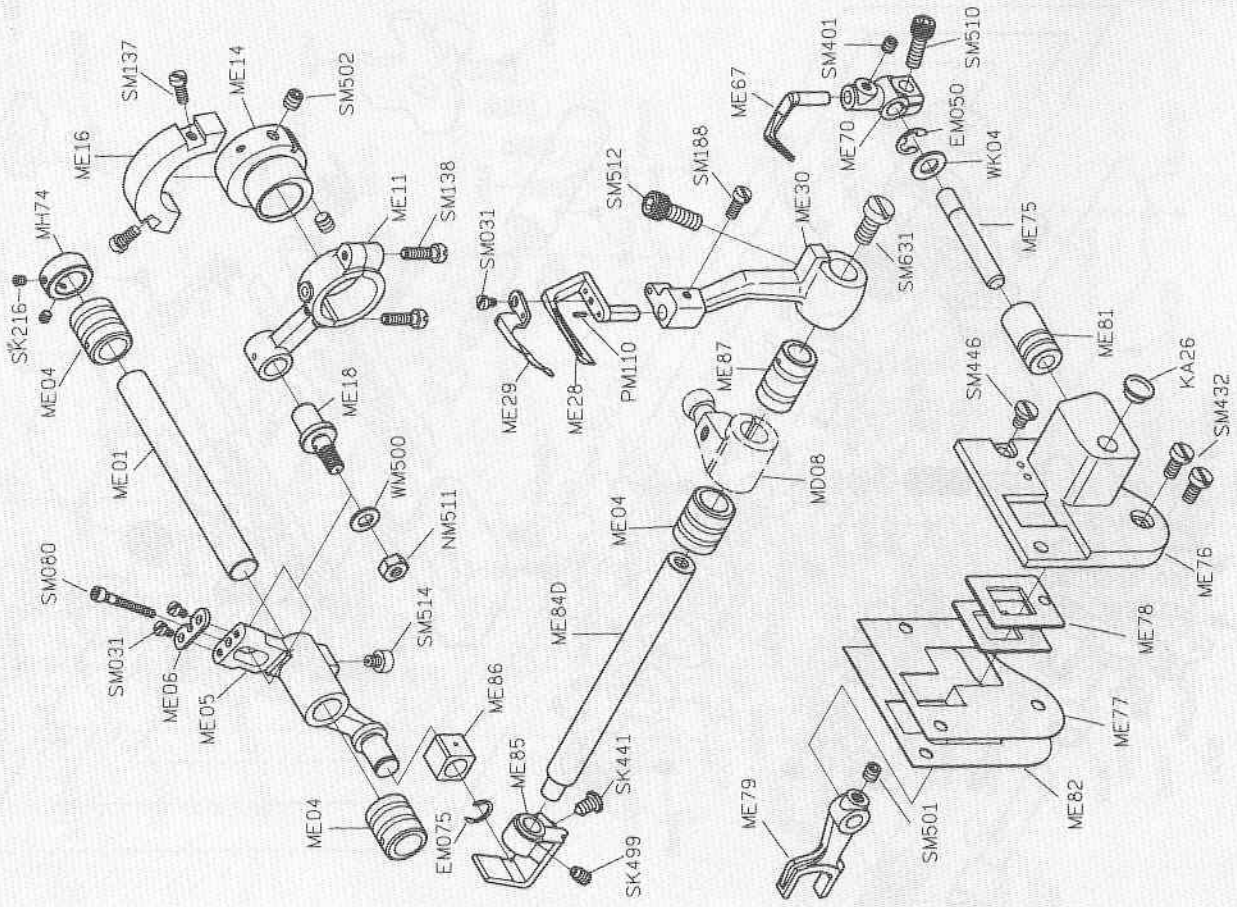


PARTS LIST FOR MD GROUP

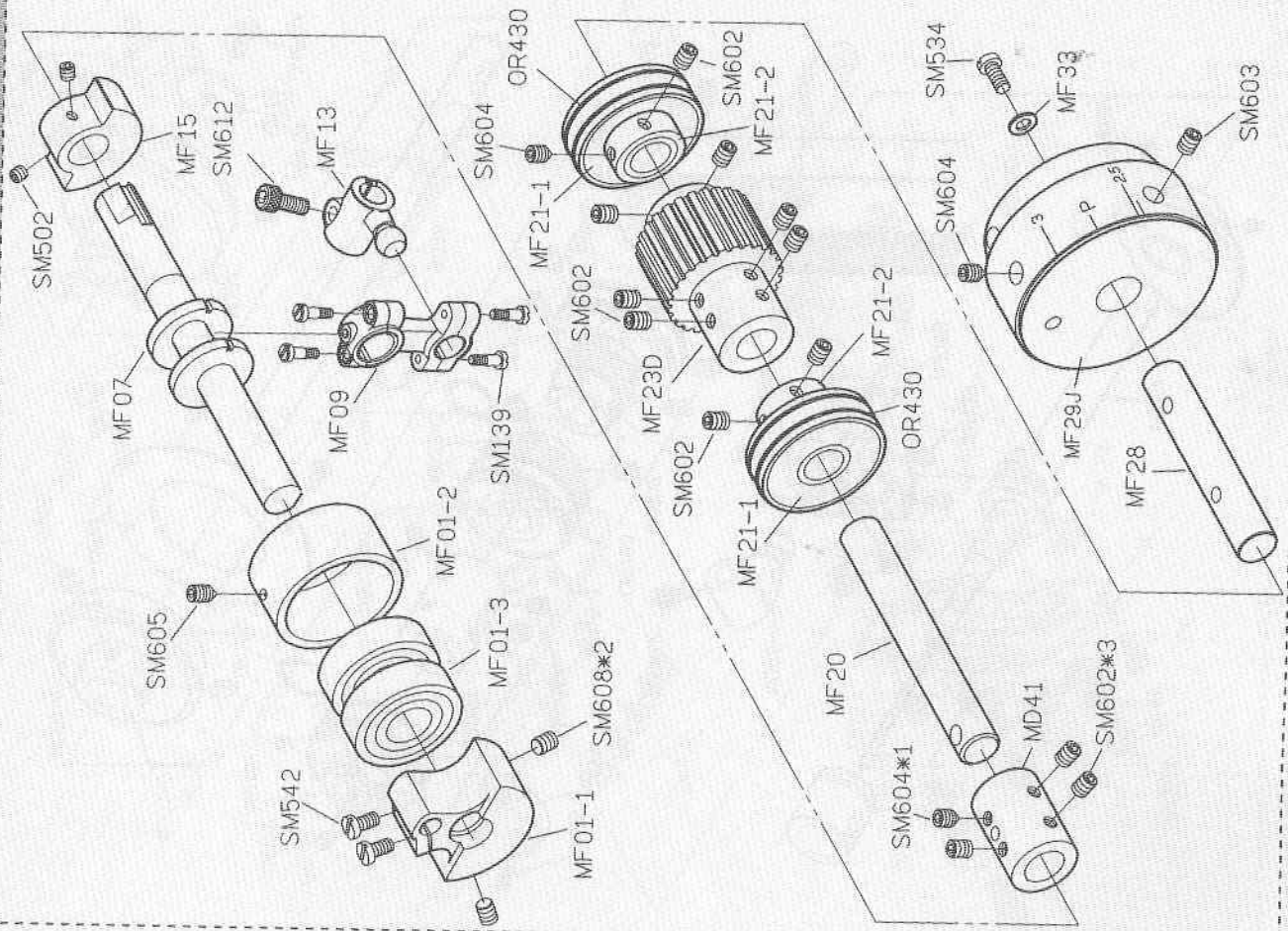


PARTS LIST FOR MC(2) GROUP

PARTS LIST FOR ME GROUP

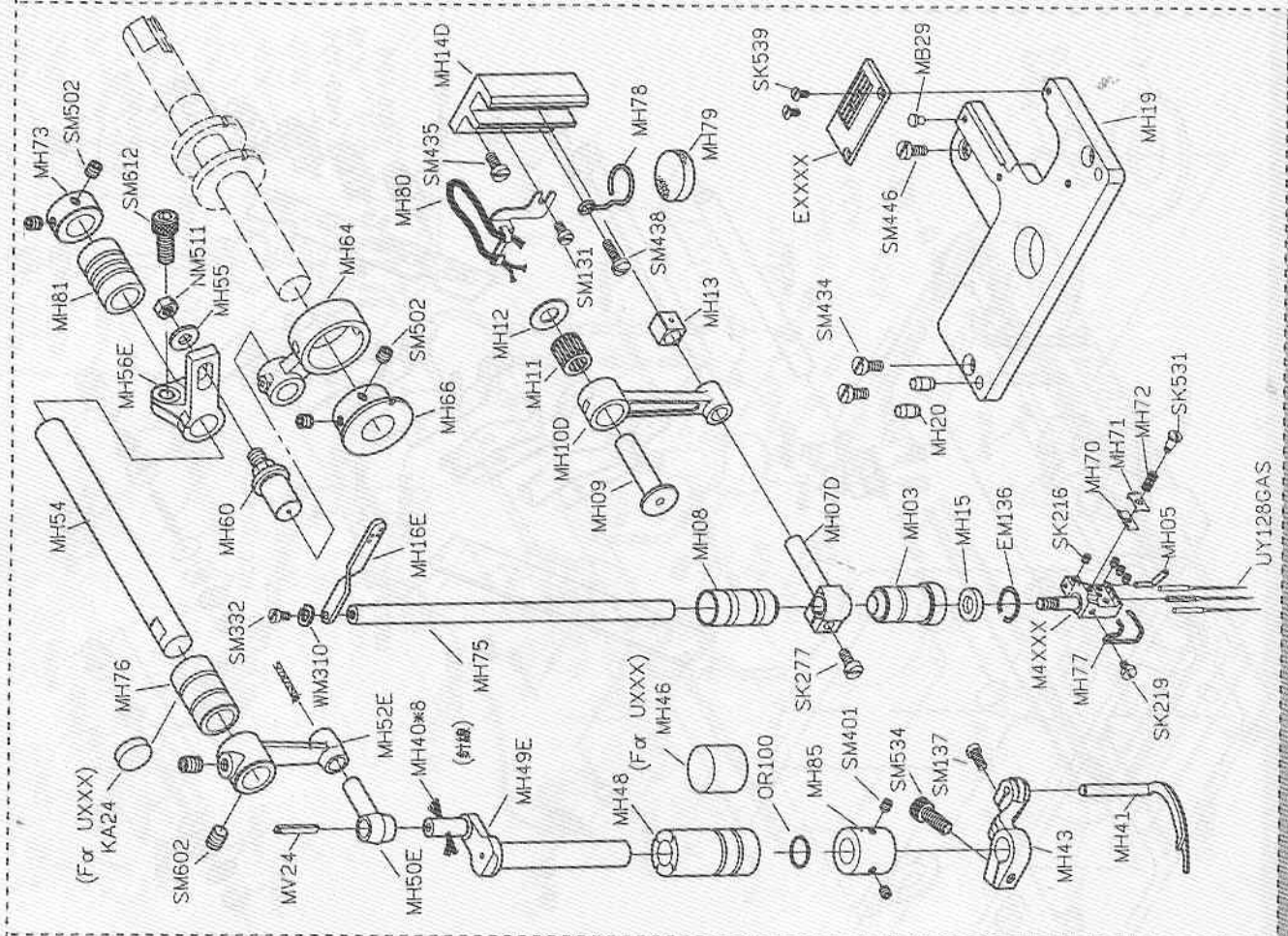
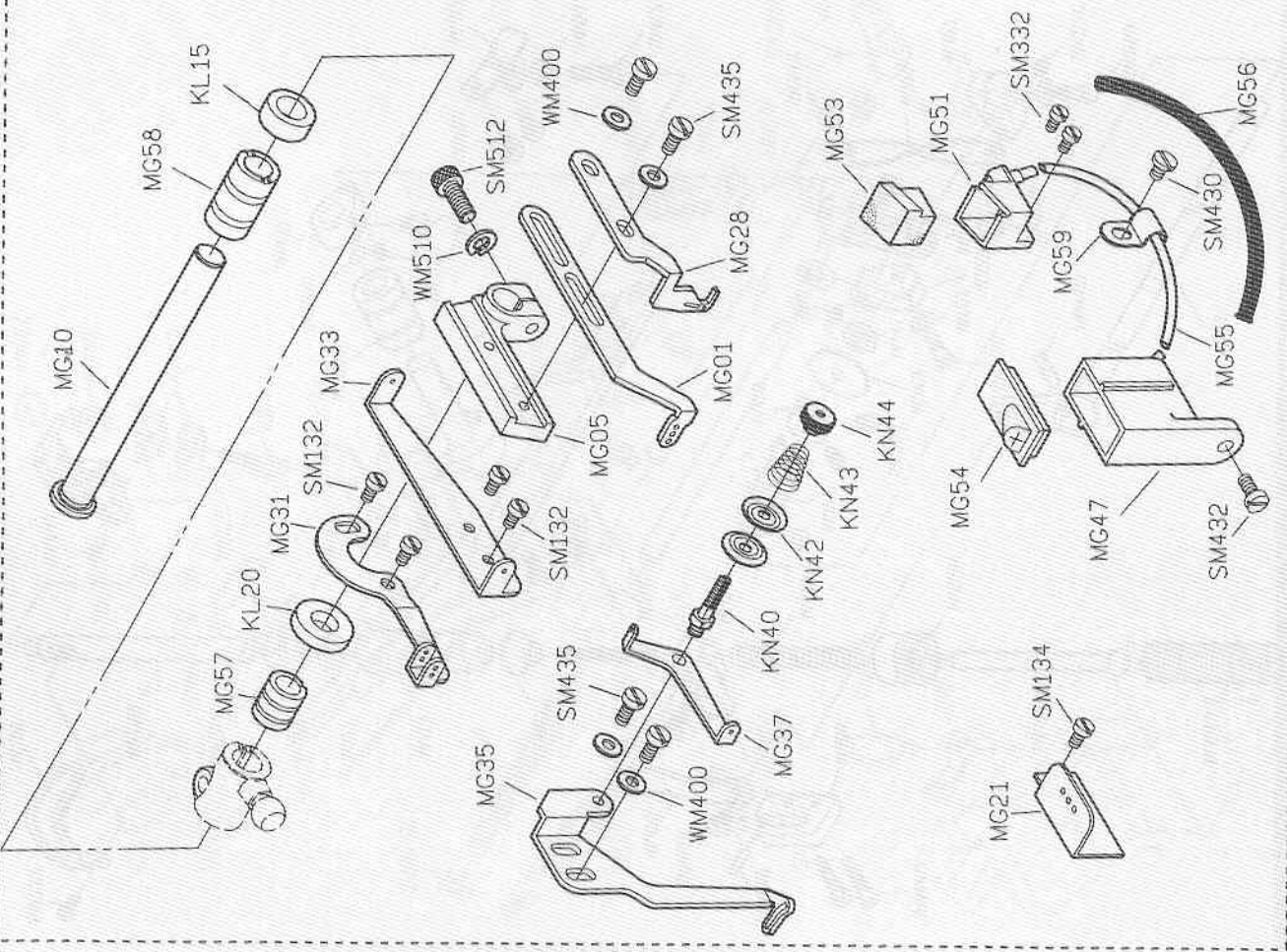


PARTS LIST FOR MF GROUP

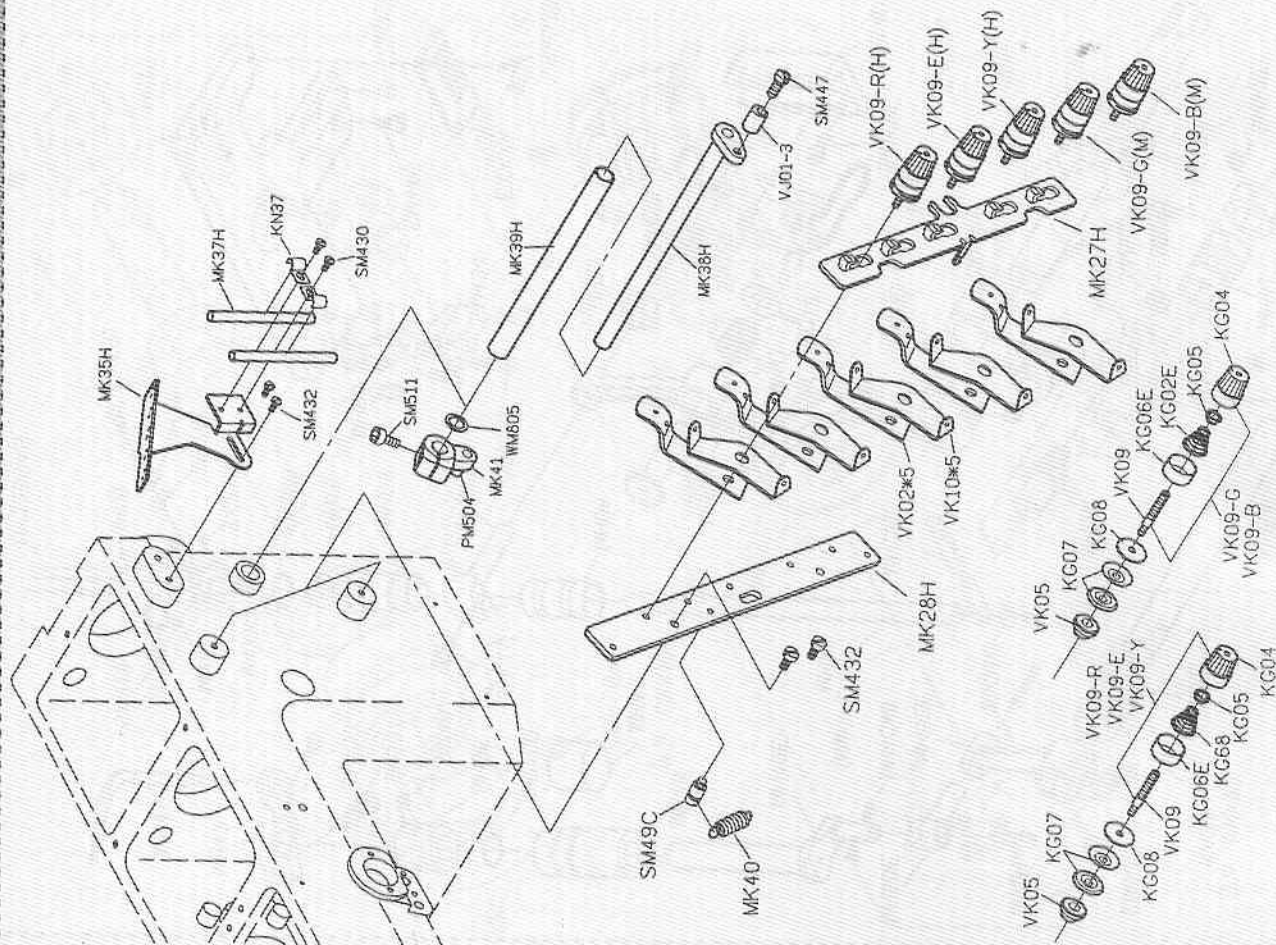


PARTS LIST FOR MH GROUP

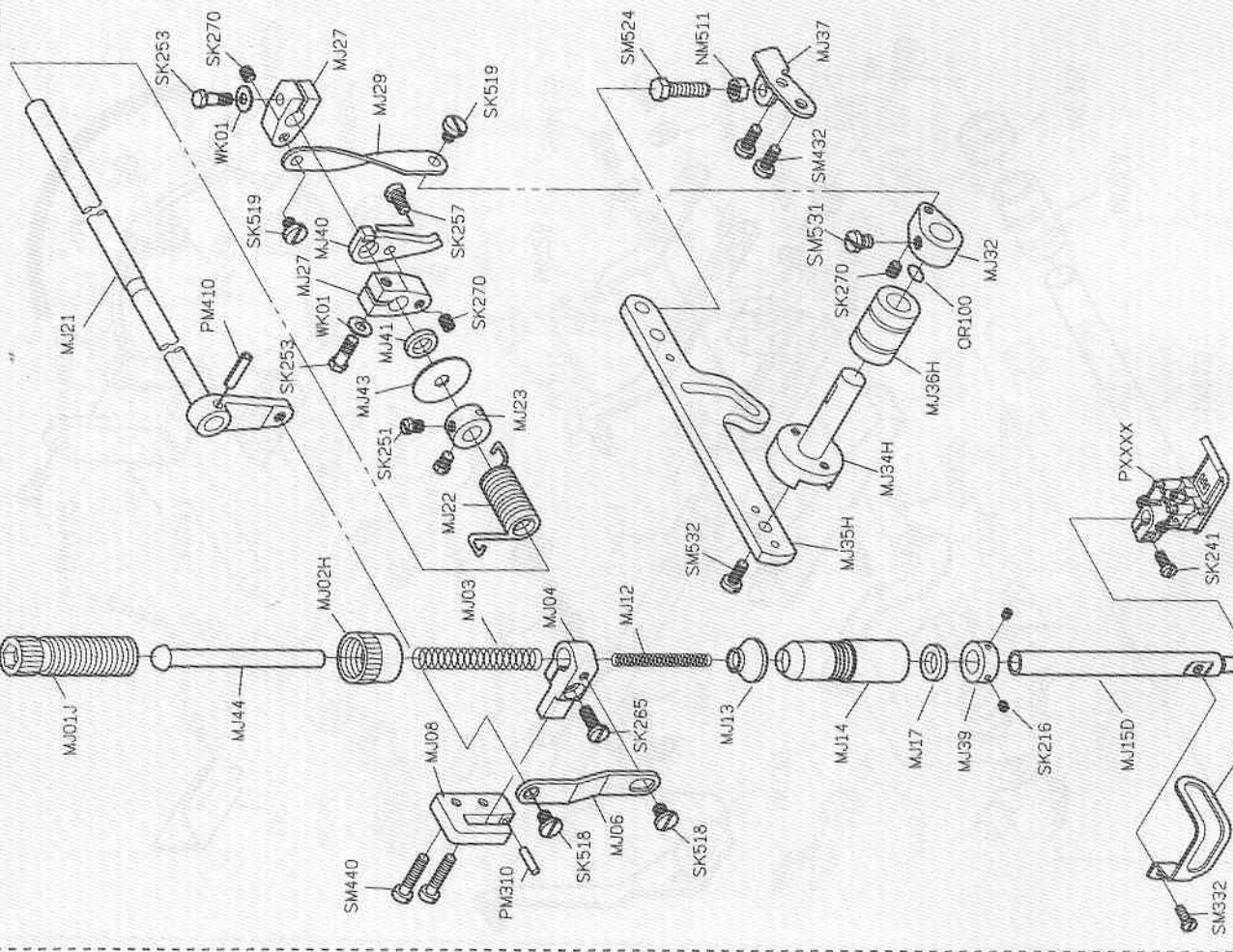
PARTS LIST FOR MG GROUP

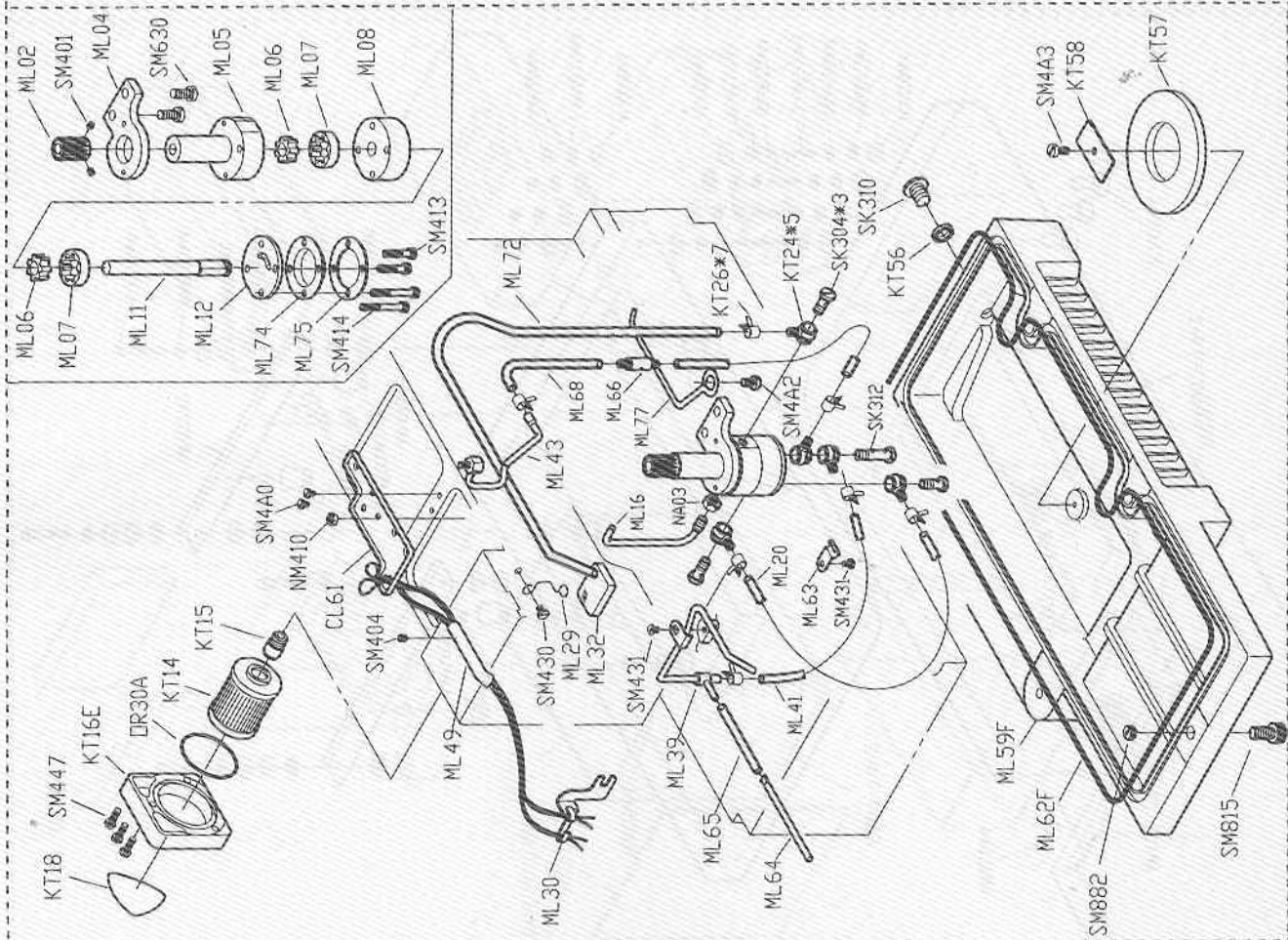


PARTS LIST FOR MK(1) GROUP

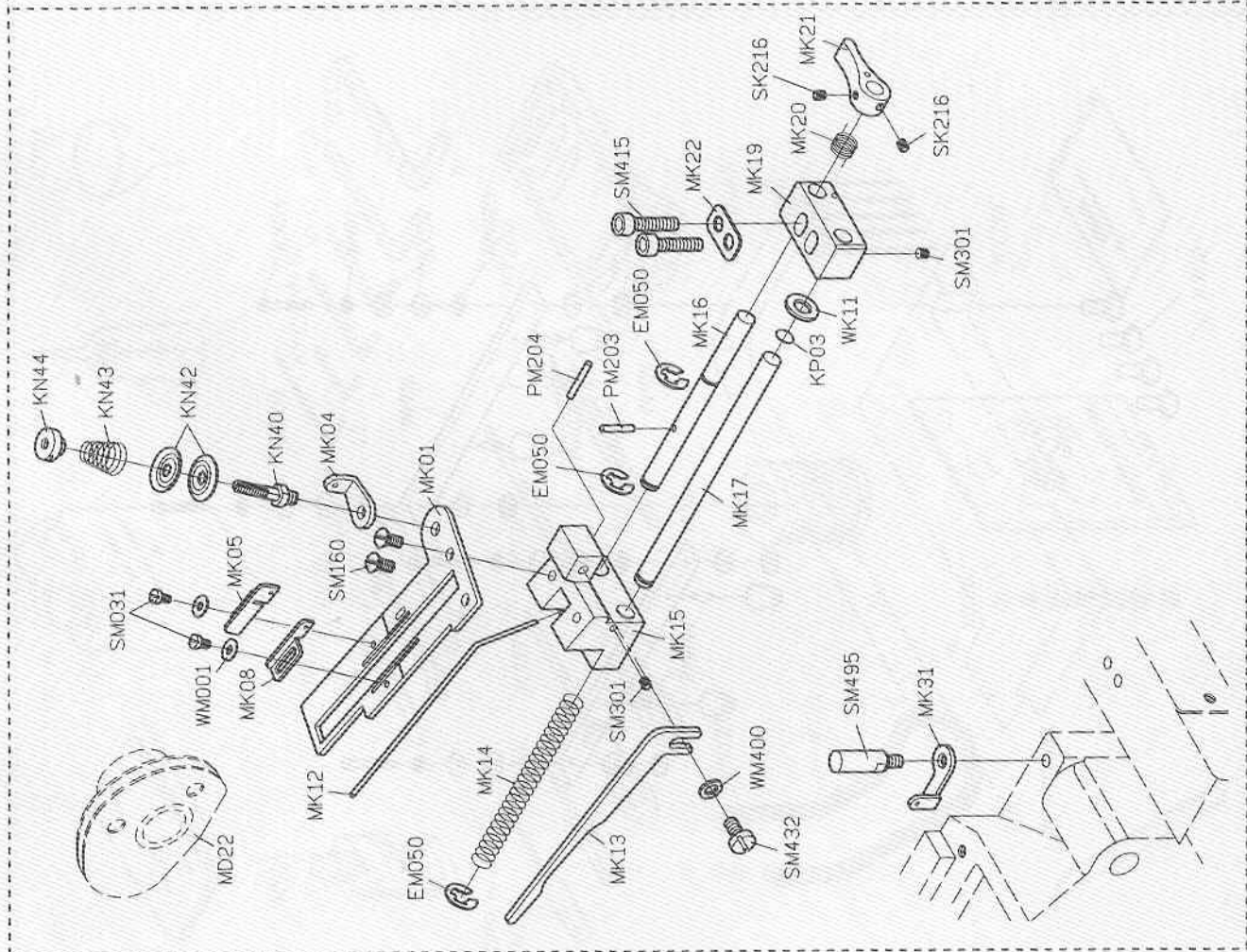


PARTS LIST FOR MJ GROUP



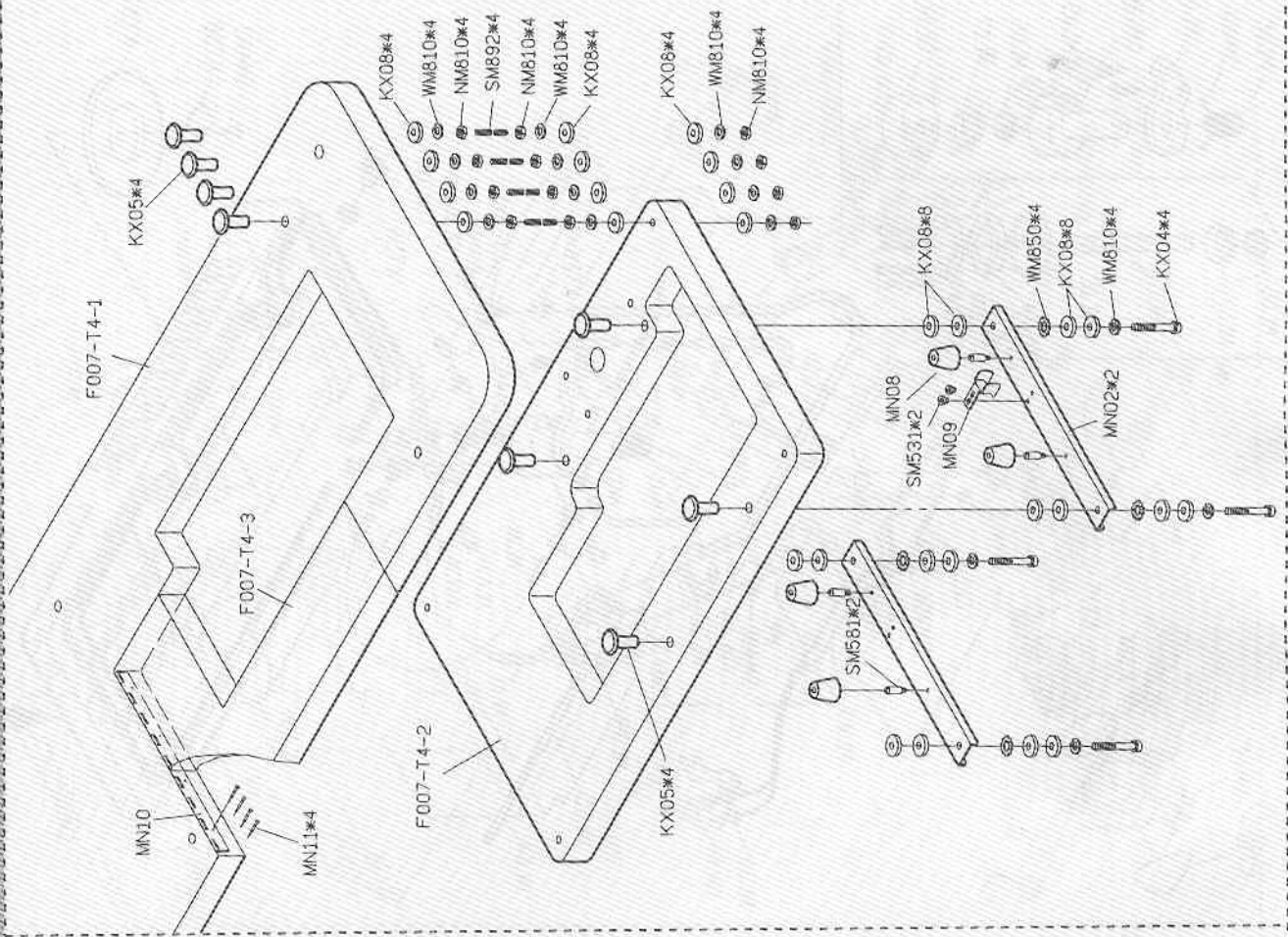


PARTS LIST FOR ML GROUP

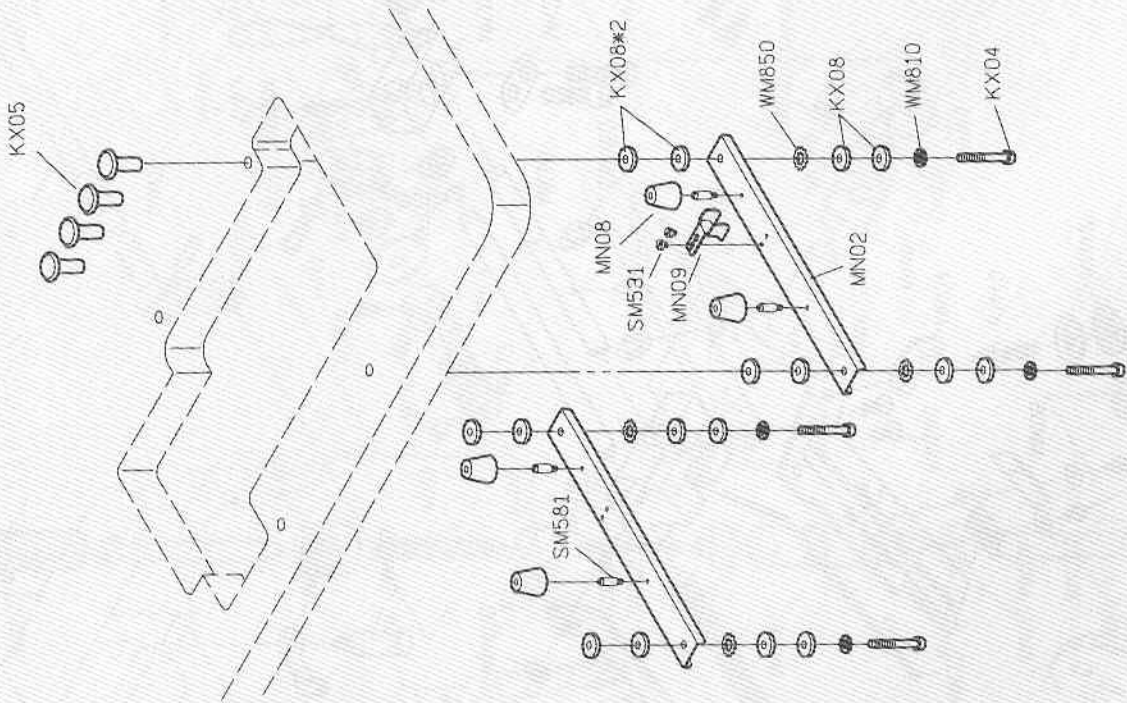


PARTS LIST FOR MK(2) GROUP

PARTS LIST FOR MN(2) GROUP

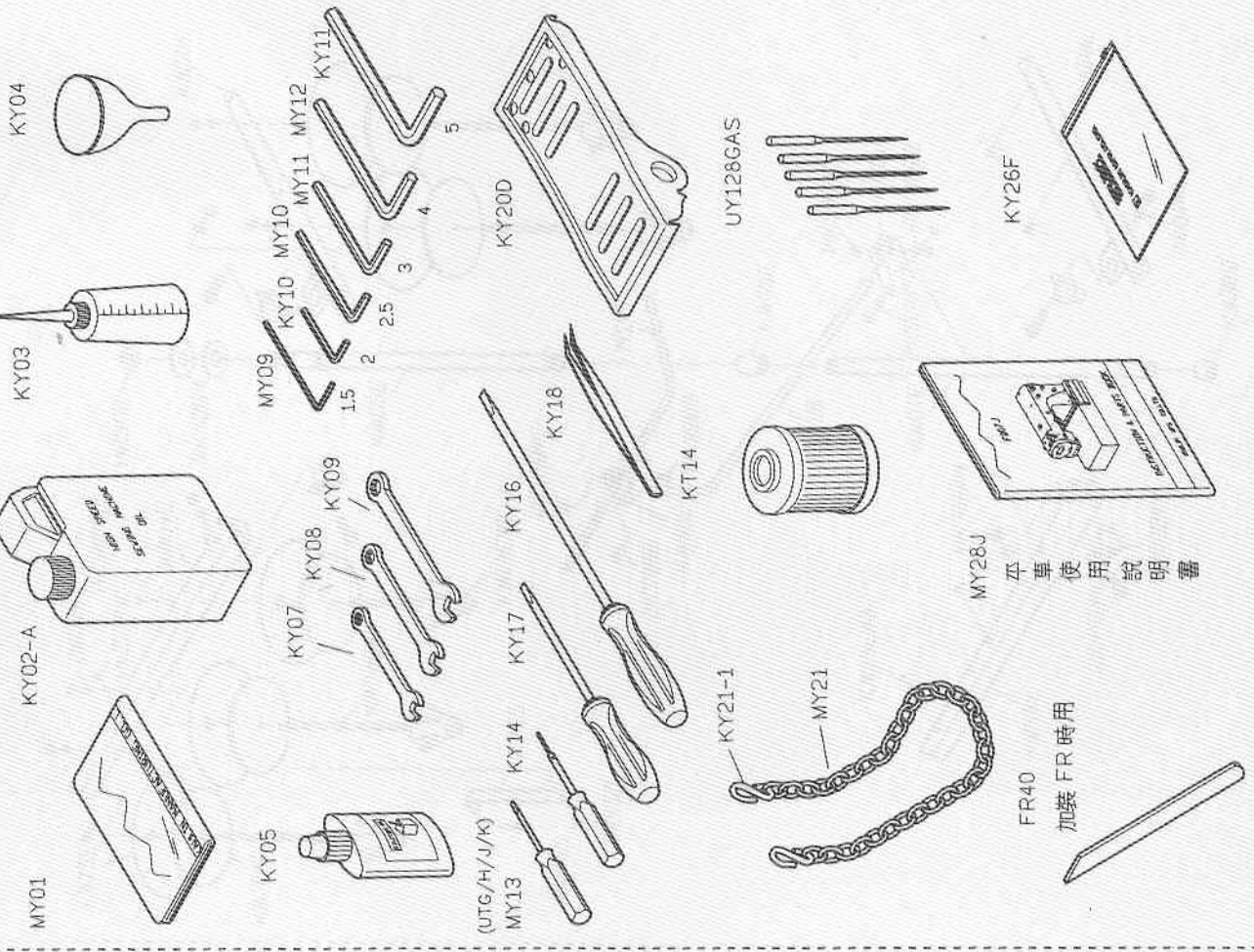
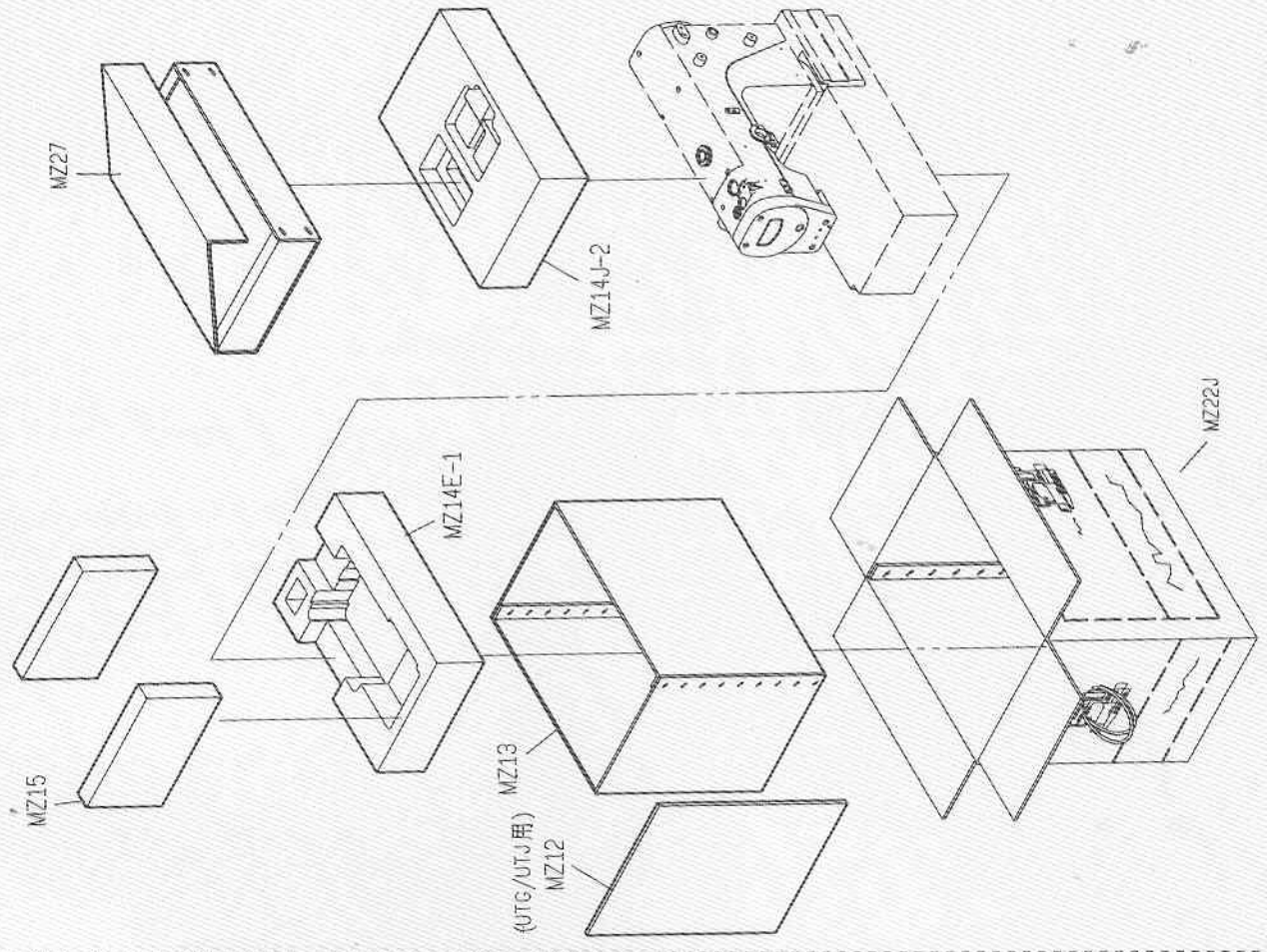


PARTS LIST FOR MN(1) GROUP



PARTS LIST FOR MZ GROUP

PARTS LIST FOR MY GROUP

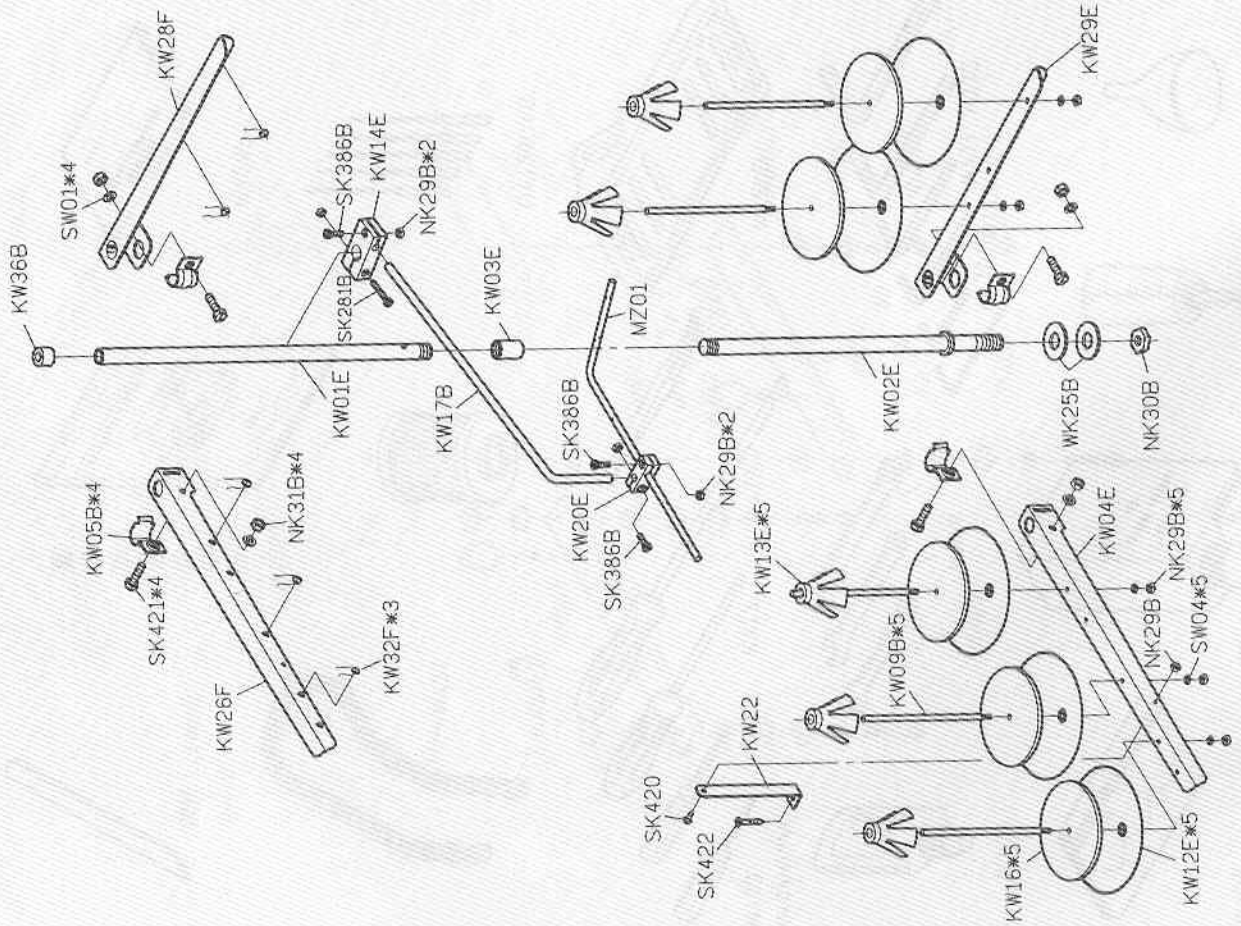


FR40 加裝FR時用

MY28J 平車使用說明書

(UTG/H/J/K) MY13

PARTS LIST FOR THREAD STAND GROUP





F007J

高林股份有限公司 KAULIN MFG. CO., LTD.